

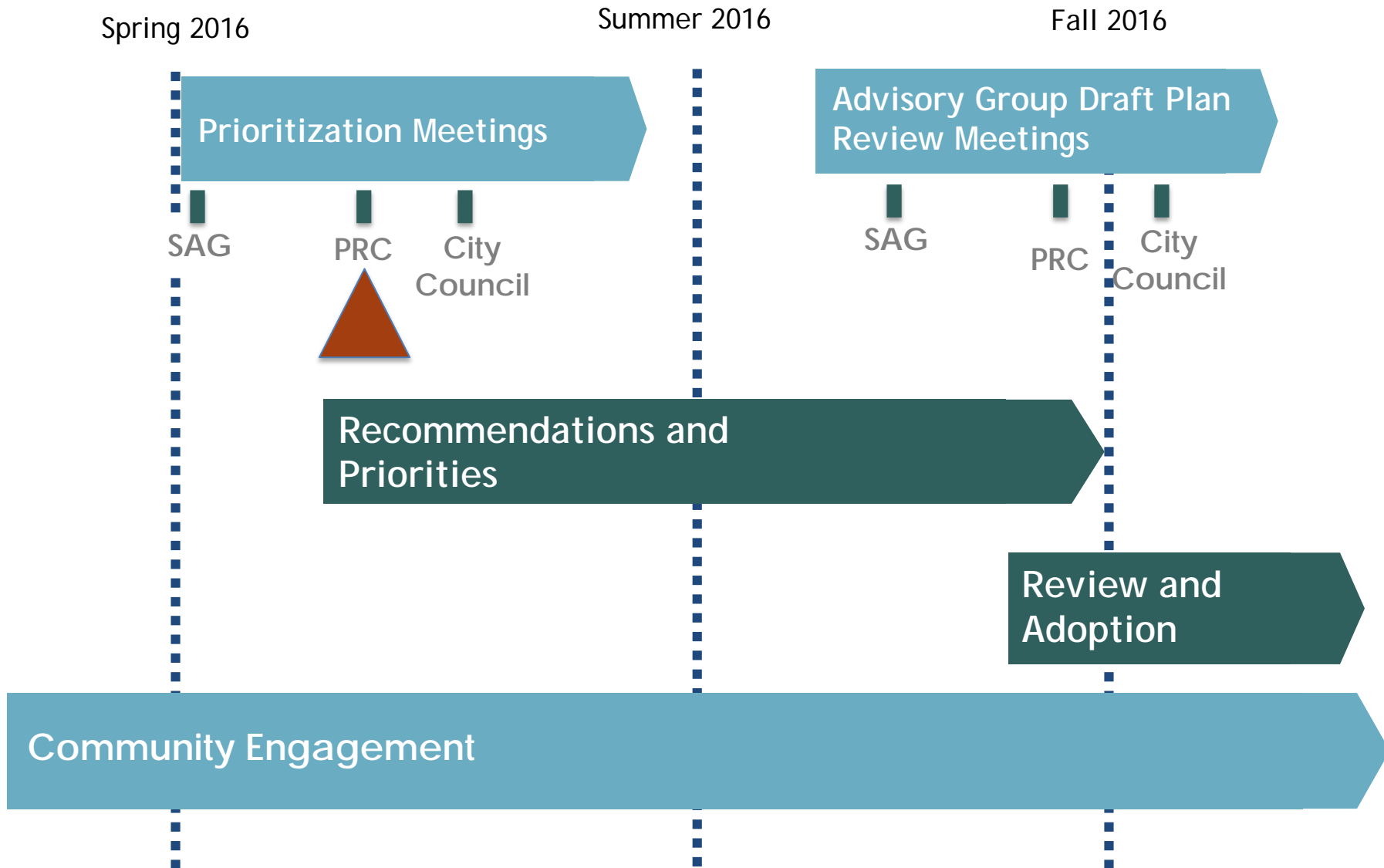


# Bikeways, Trails, Parks and Recreation Master Plan Update

Parks and Recreation Commission

May 31, 2016

# City of Morgan Hill Bikeways, Trails, Parks and Recreation Master Plan



# Community Outreach To-Date

- Staff and PRC Meetings
- Stakeholder Advisory Group Meetings (4)
- Intercepts Surveys
- Mapita Online Survey
- Community Workshop
- Online Community Survey
- Project Website
- Social Media, Emails and Newsletters

# Community Survey Results

Appx. 1,100 participants!



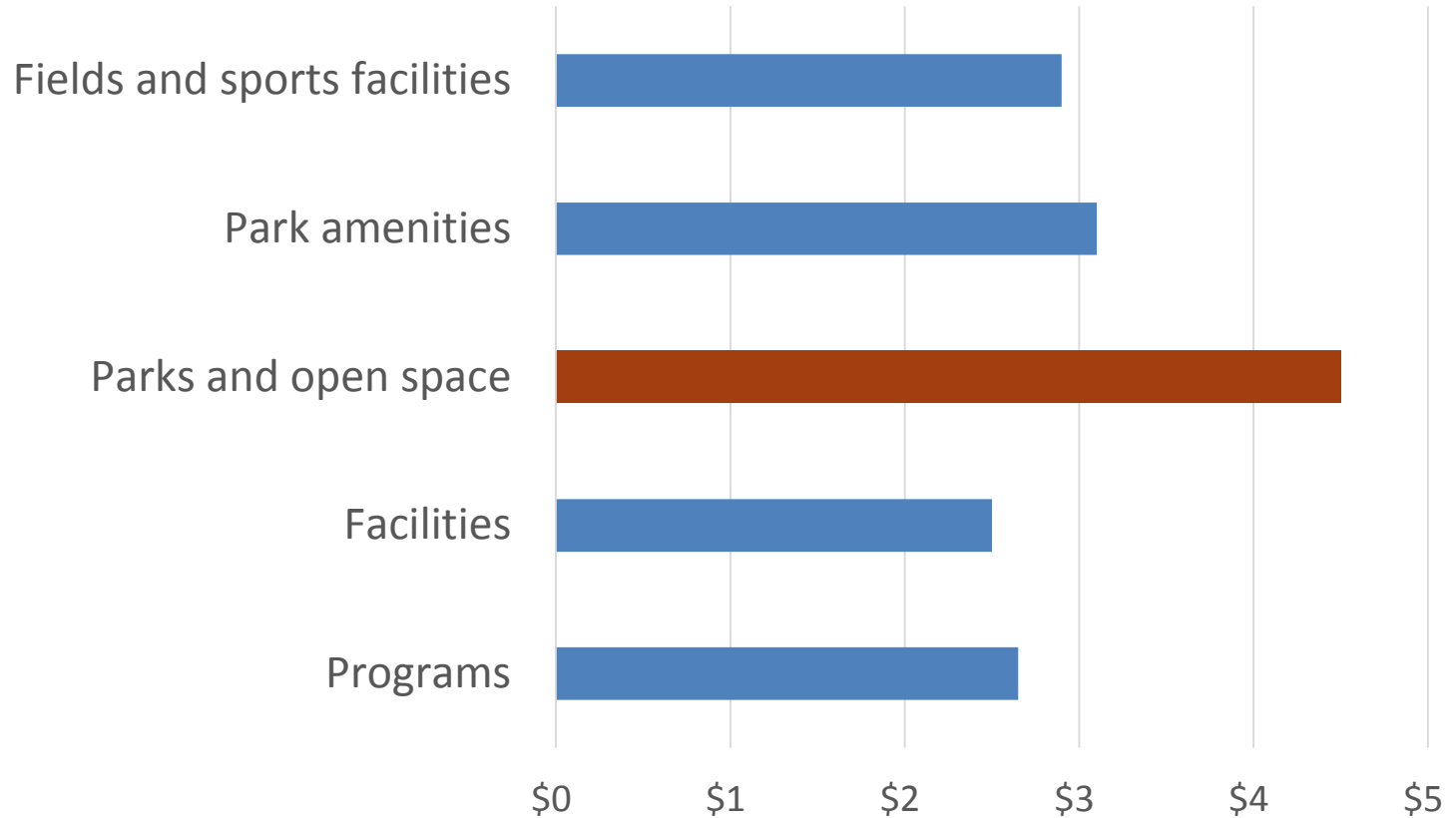


# Park Experiences

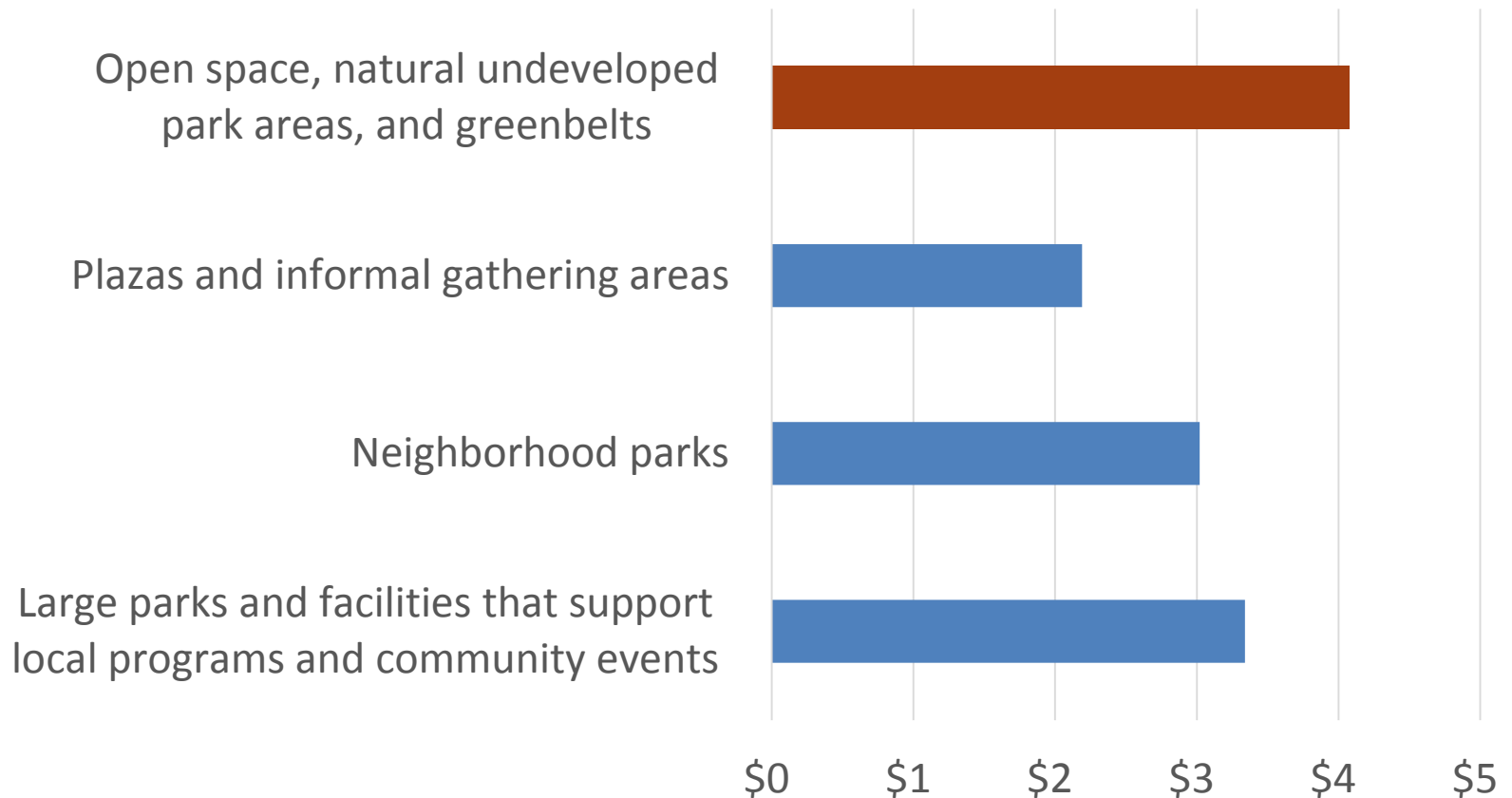
- 61% “really like” **play for all ages**
- 60% “really like” more and **varied play structures**
- 56% “really like” **adventure play**
- 61% “really like” **nature play**



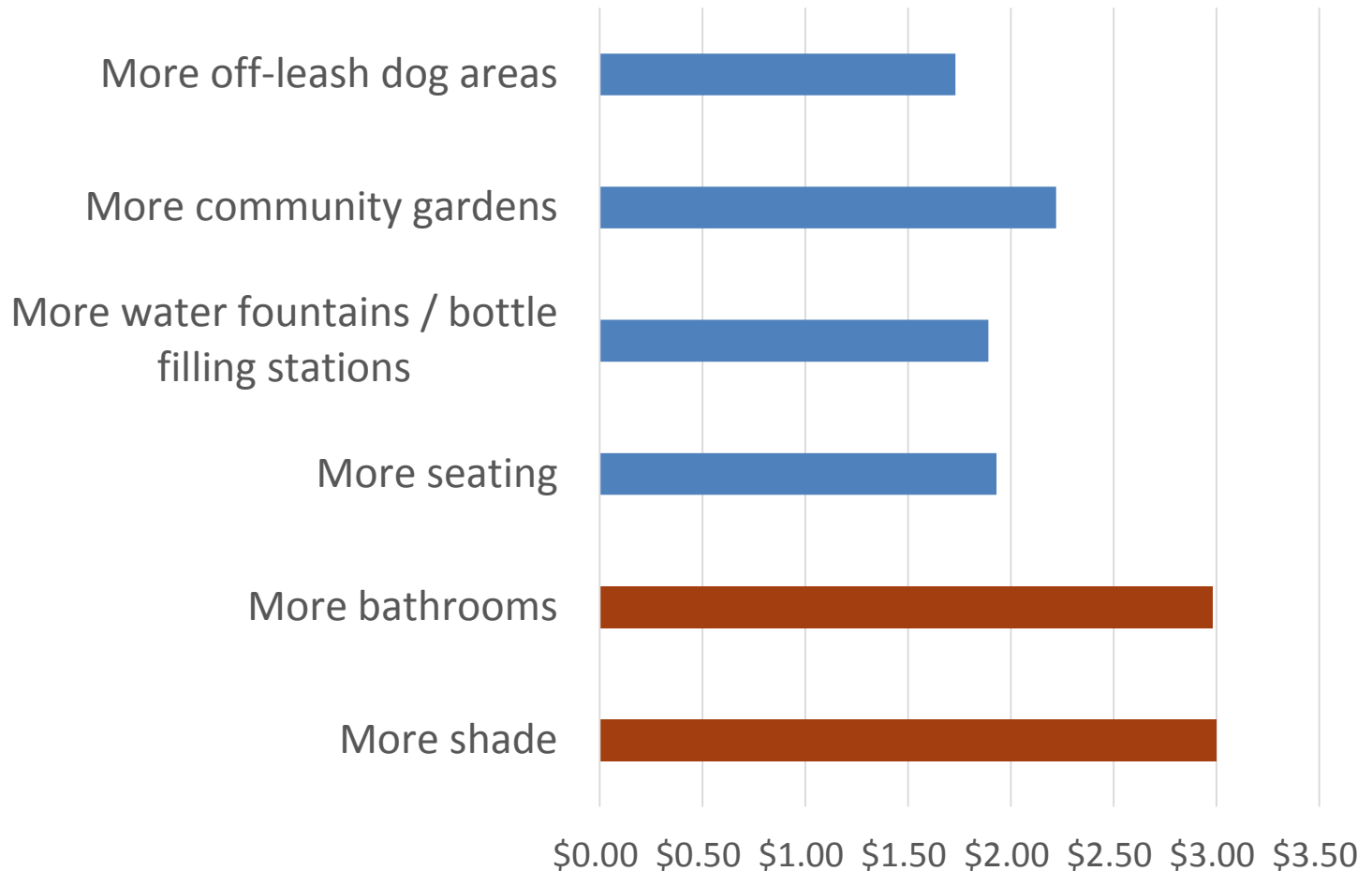
# Park and Facility Investments



# Parks and Open Spaces

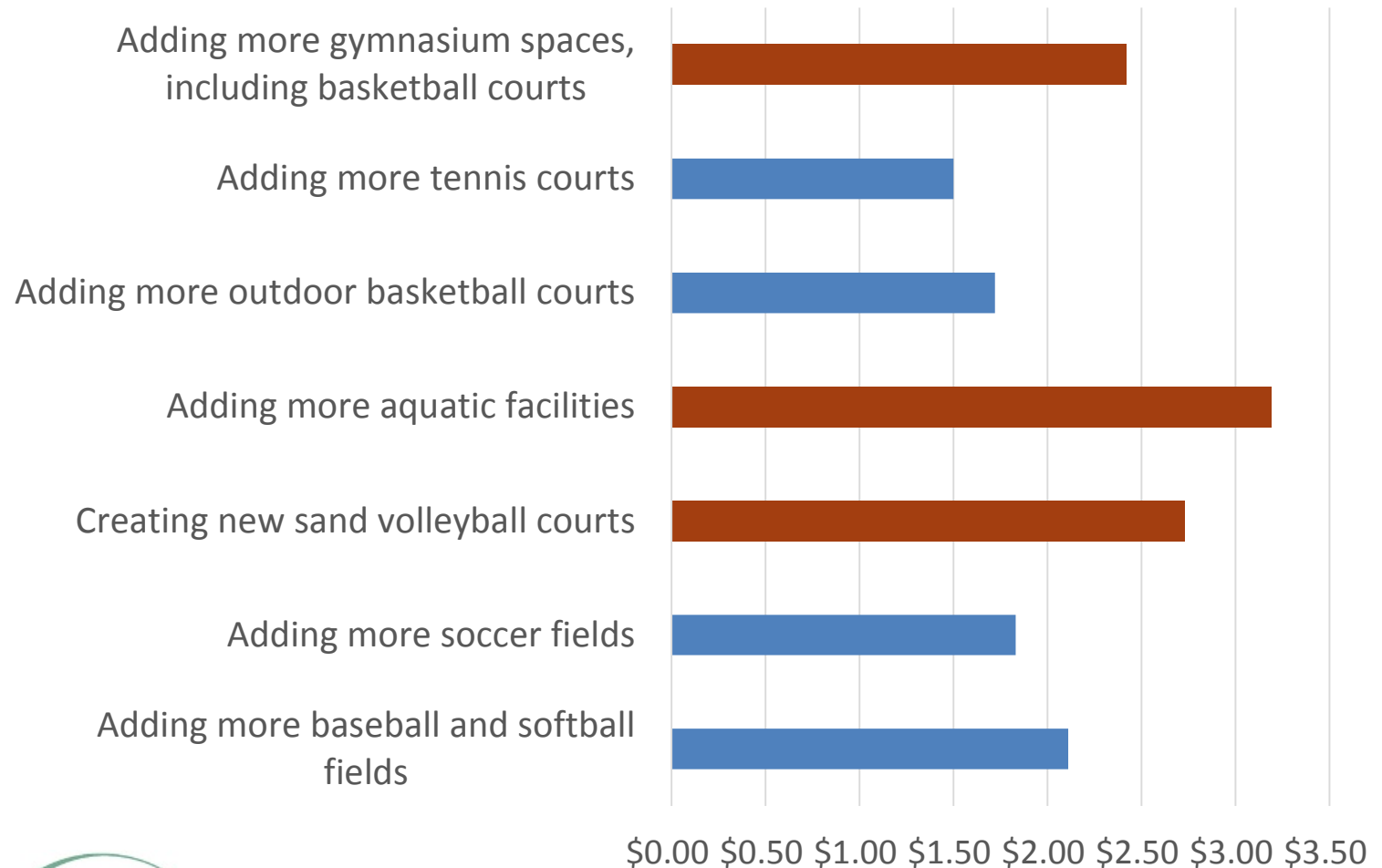


# Park Amenities

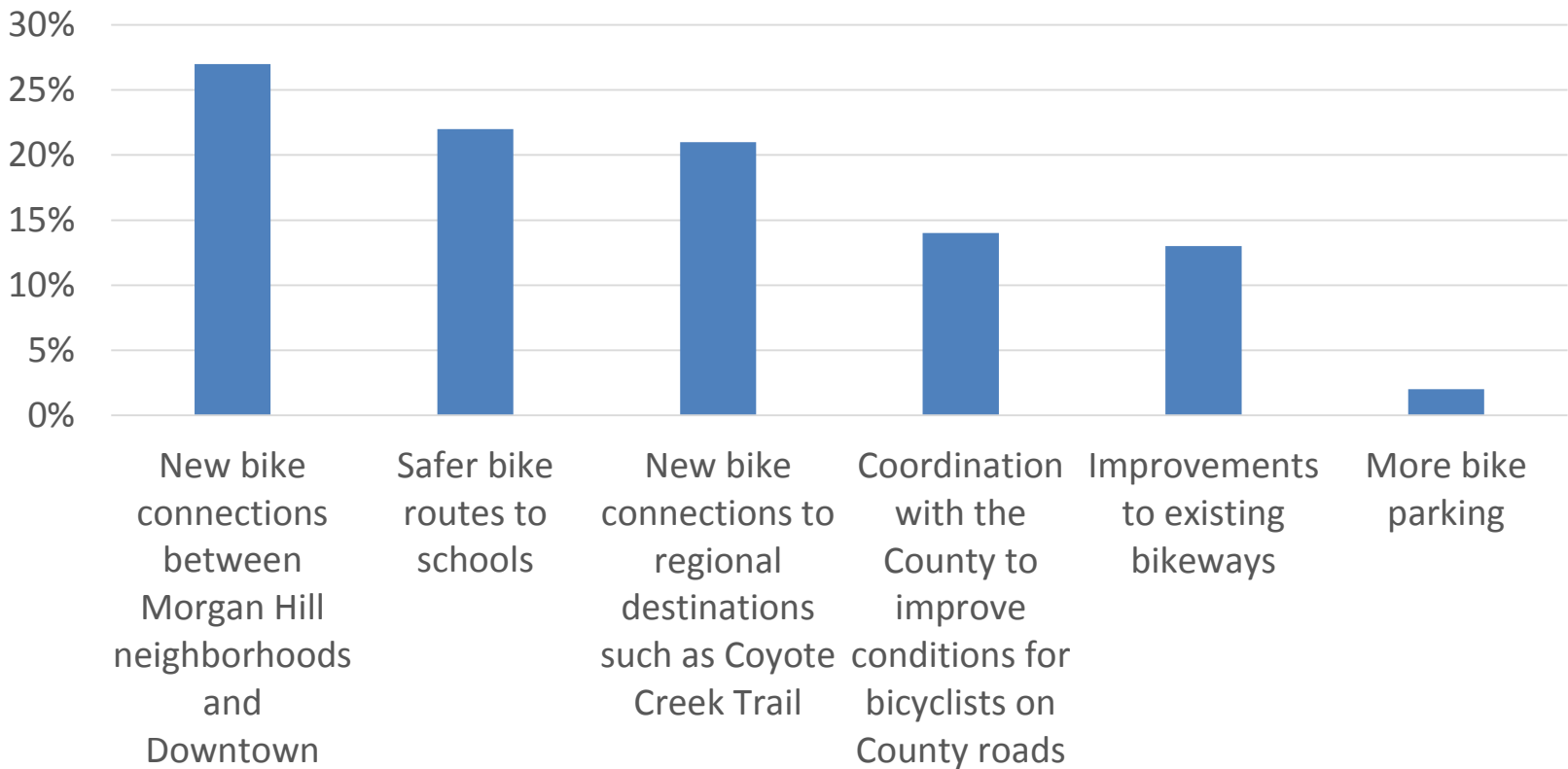




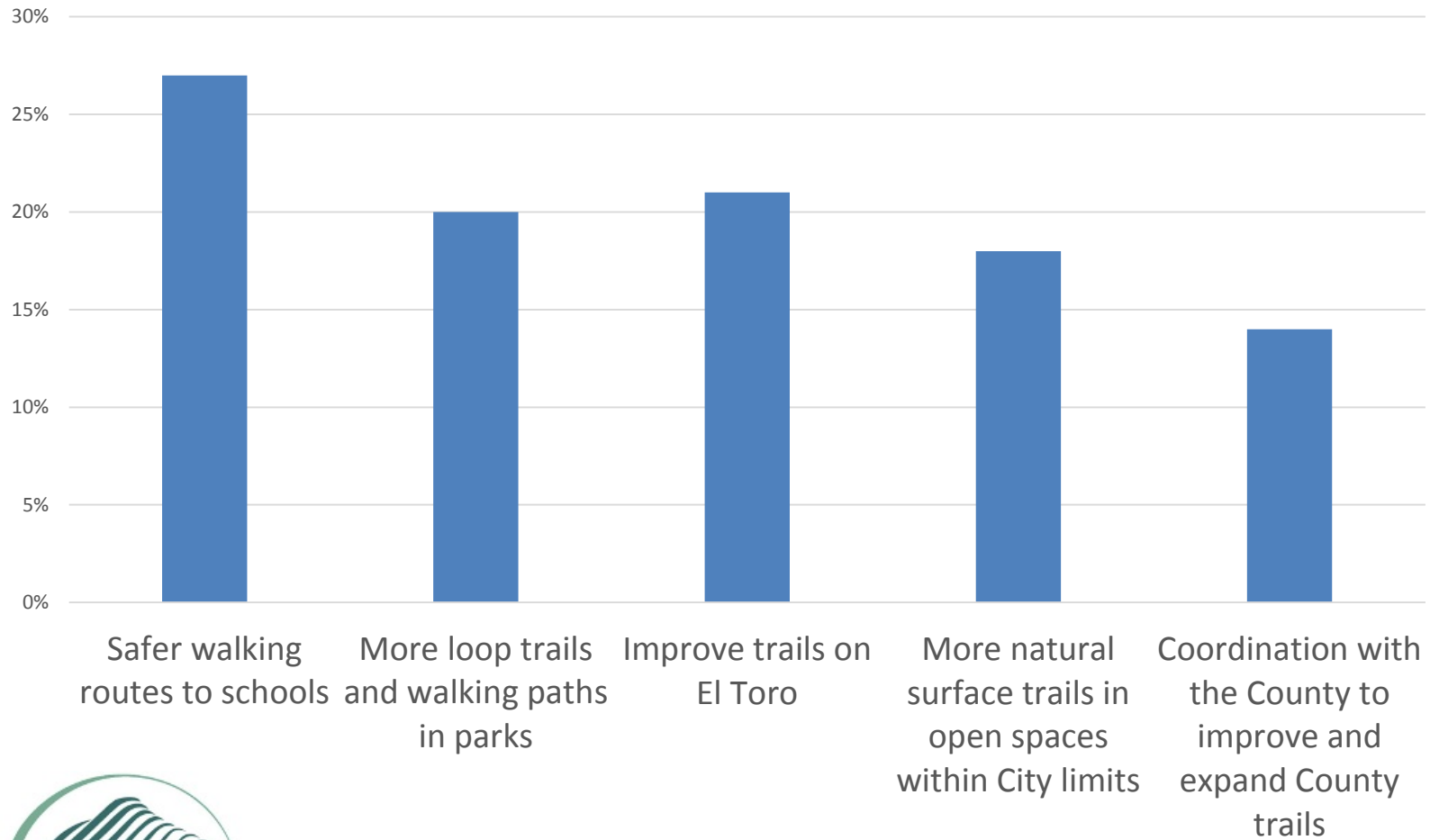
# Fields and Facilities



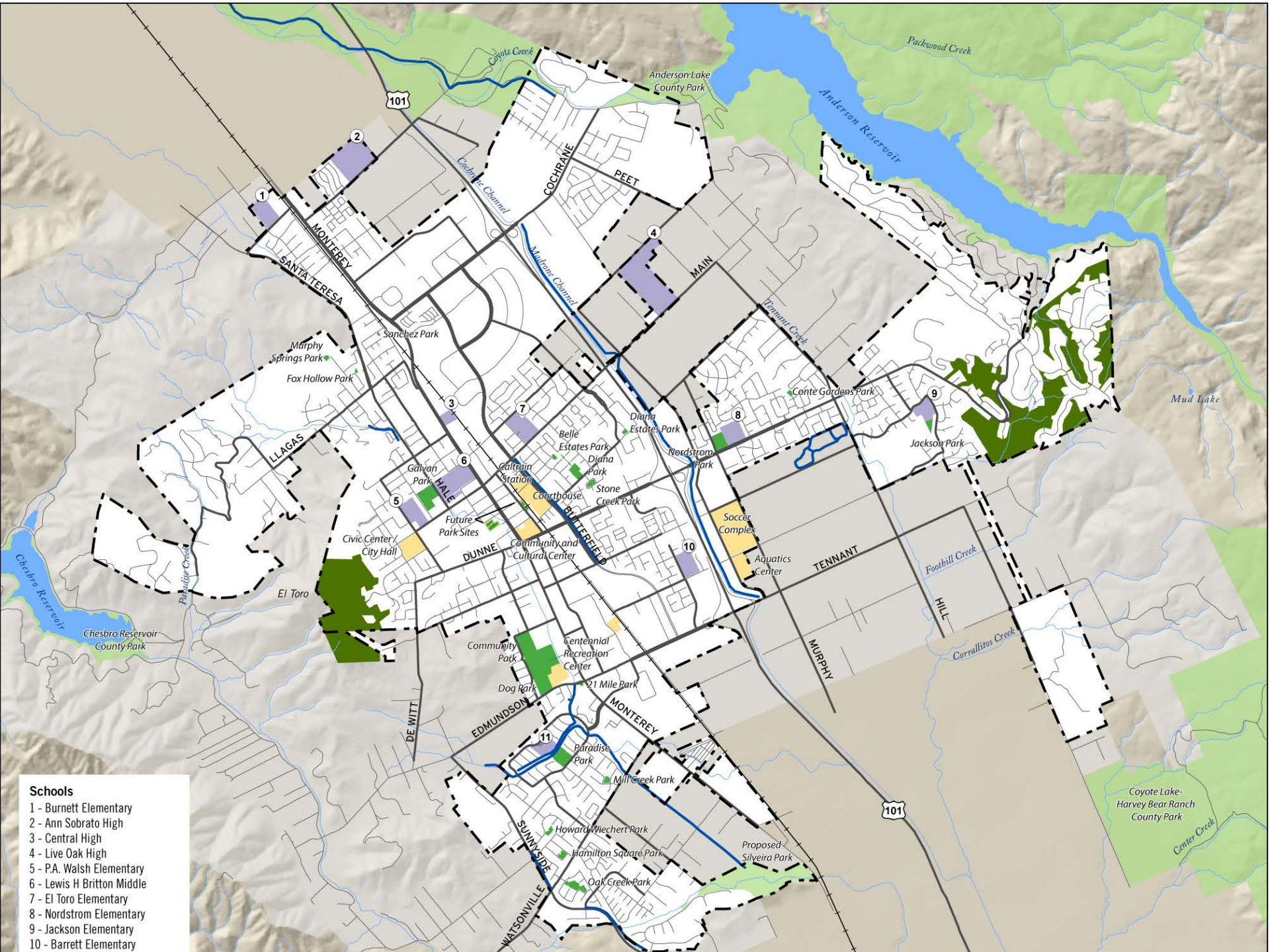
# Bikeway Improvements



# Trail Investments



# Bikeway & Trail Recommendations



- Schools**
- 1 - Burnett Elementary
  - 2 - Ann Sobrato High
  - 3 - Central High
  - 4 - Live Oak High
  - 5 - P.A. Walsh Elementary
  - 6 - Lewis H Britton Middle
  - 7 - El Toro Elementary
  - 8 - Nordstrom Elementary
  - 9 - Jackson Elementary
  - 10 - Barrett Elementary



# Existing Bikeways



## DRAFT Bikeway + Trail Network Map

### Legend

Existing Bike Lane

Destinations

Caltrain Station

Major Roads

Railroads

Public Facility

Schools (see inset key)

City Parks

Public Open Spaces

Santa Clara County Parks

Water Feature

City Boundary

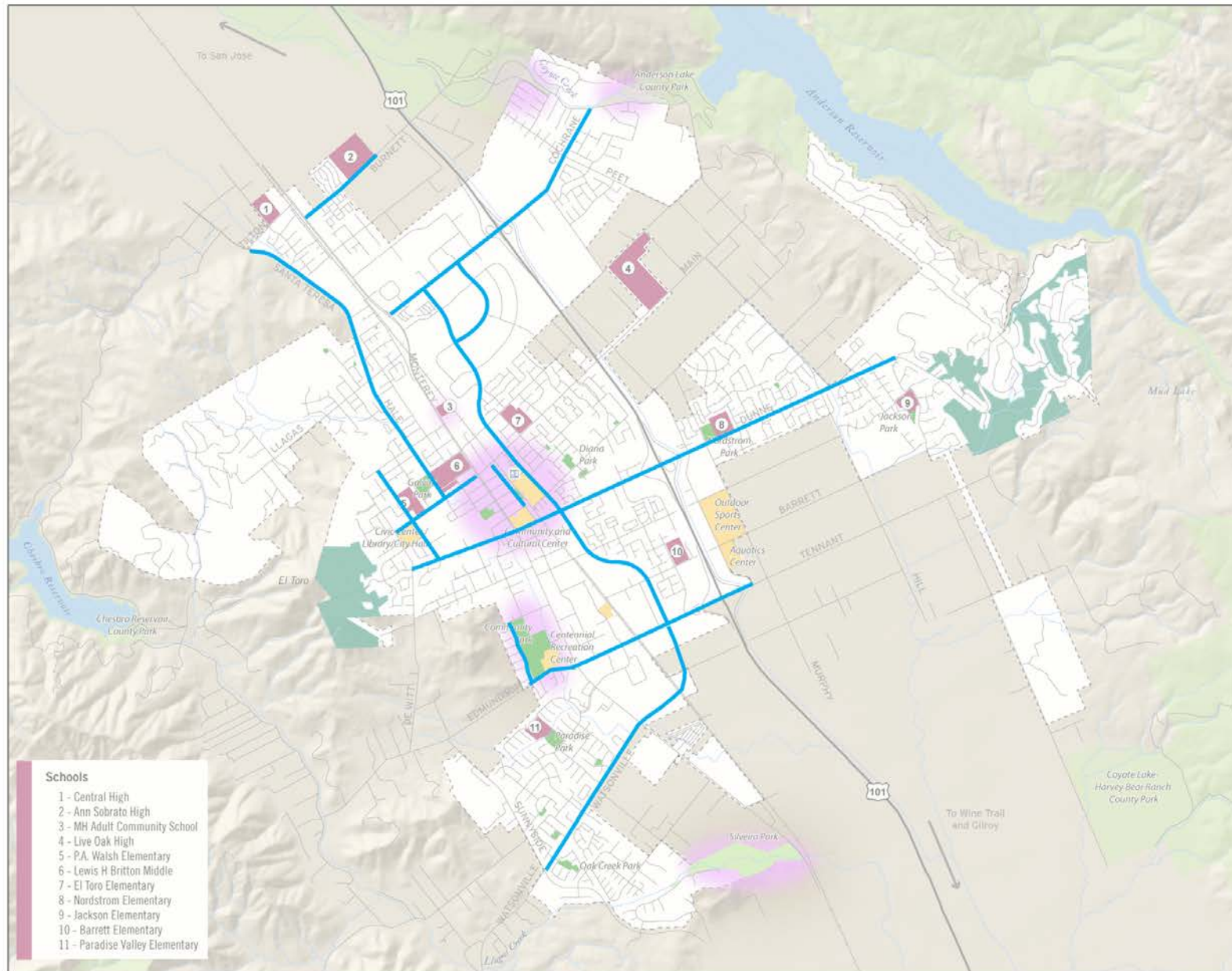
0 0.25 0.5 Miles

Data Sources: City of Morgan Hill Planning Division, Santa Clara County Information Services Department, Digital Globe



### Schools

- 1 - Central High
- 2 - Ann Sobrato High
- 3 - MH Adult Community School
- 4 - Live Oak High
- 5 - P.A. Walsh Elementary
- 6 - Lewis H Britton Middle
- 7 - El Toro Elementary
- 8 - Nordstrom Elementary
- 9 - Jackson Elementary
- 10 - Barrett Elementary
- 11 - Paradise Valley Elementary





# Potential Bikeways



## DRAFT Bikeway + Trail Network Map

### Legend

- Existing Bike Lane
- Potential Bikeway
- Intersection Improvements

Proposed Bicycle/Pedestrian Bridge

Destinations

Caltrain Station

Major Roads

Railroads

Public Facility

Schools (see inset key)

City Parks

Public Open Spaces

Santa Clara County Parks

Water Feature

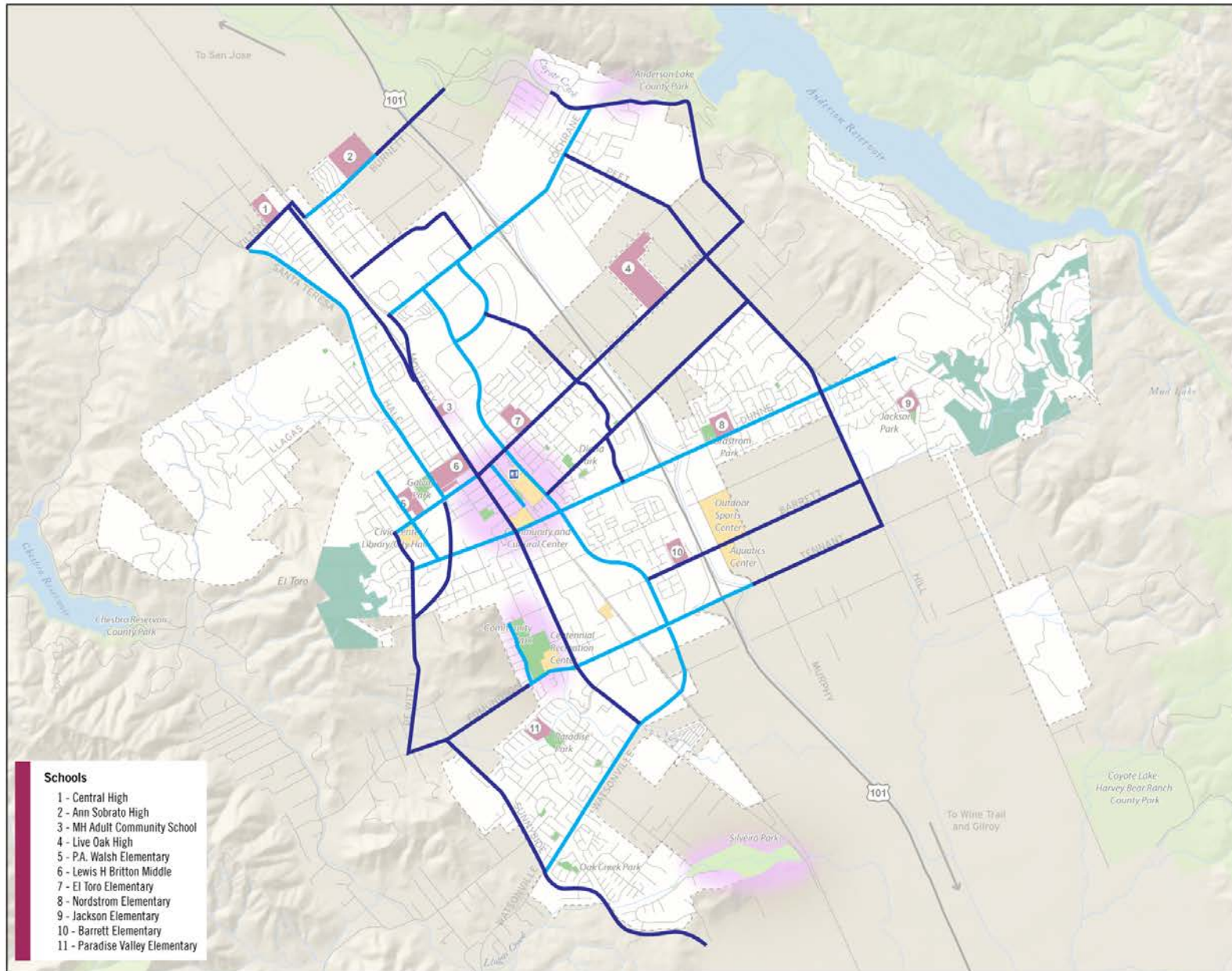
City Boundary

N  
0 0.25 0.5 Miles

Data Sources: City of Morgan Hill Planning Division, Santa Clara County Information Services Department, Digital Globe  
May 2016

### Schools

- 1 - Central High
- 2 - Ann Sobrato High
- 3 - MH Adult Community School
- 4 - Live Oak High
- 5 - P.A. Walsh Elementary
- 6 - Lewis H Britton Middle
- 7 - El Toro Elementary
- 8 - Nordstrom Elementary
- 9 - Jackson Elementary
- 10 - Barrett Elementary
- 11 - Paradise Valley Elementary



# Existing Trails



CITY OF MORGAN HILL

## DRAFT Bikeway + Trail Network Map

### Legend

Existing Multi-use Trail

Destinations

Caltrain Station

Major Roads

Railroads

Public Facility

Schools (see inset key)

City Parks

Public Open Spaces

Santa Clara County Parks

Water Feature

City Boundary

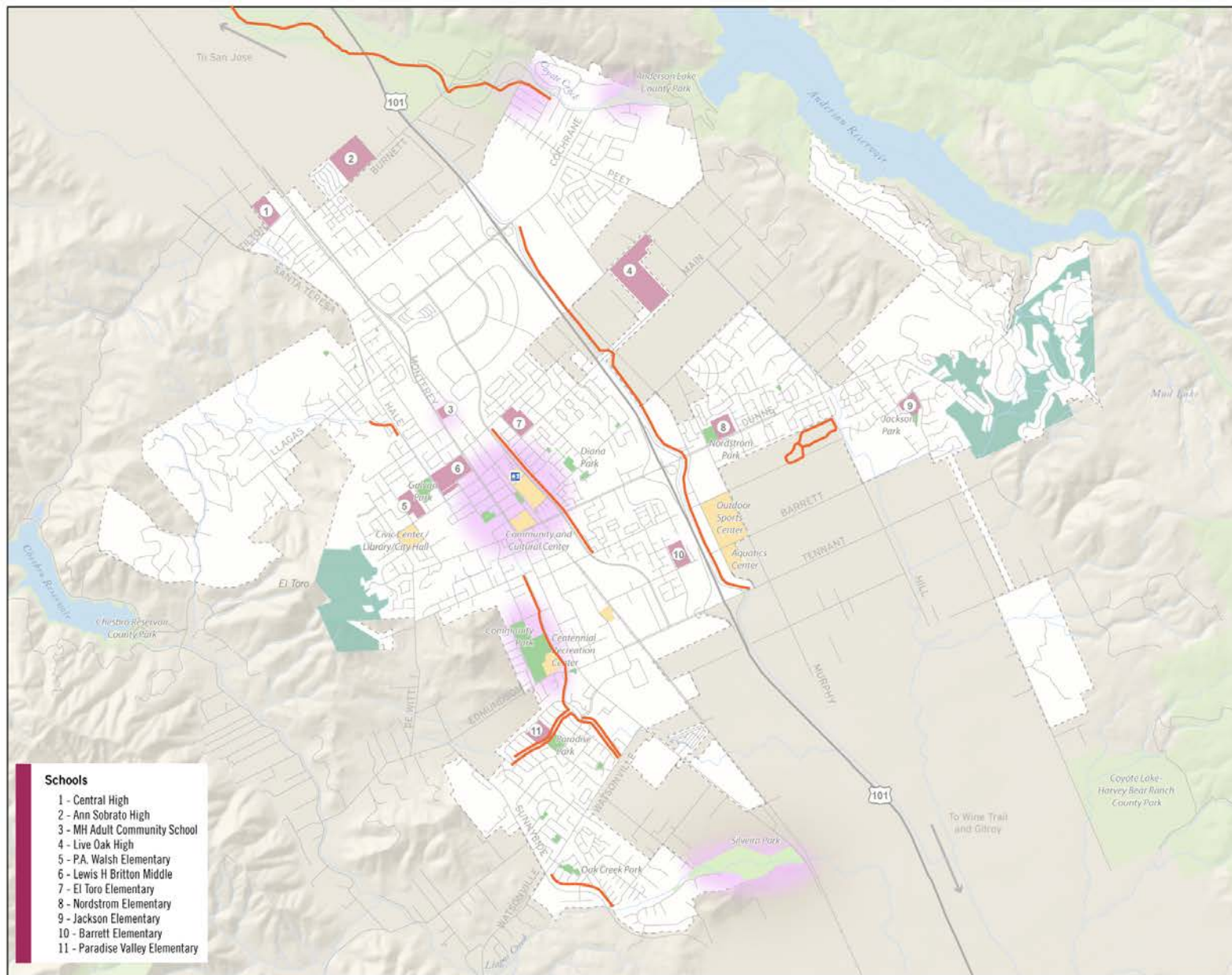
0 0.25 0.5 Miles

Data Sources: City of Morgan Hill Planning Division, Santa Clara County Information Services Department, Digital Globe



### Schools

- 1 - Central High
- 2 - Ann Sobrato High
- 3 - MH Adult Community School
- 4 - Live Oak High
- 5 - P.A. Walsh Elementary
- 6 - Lewis H Britton Middle
- 7 - El Toro Elementary
- 8 - Nordstrom Elementary
- 9 - Jackson Elementary
- 10 - Barrett Elementary
- 11 - Paradise Valley Elementary





# Potential Trails



## DRAFT Bikeway + Trail Network Map

Existing Multi-use Trail  
Potential Multi-use Trail

Destinations

Caltrain Station

Major Roads

Railroads

Public Facility

Schools (see inset key)

City Parks

Public Open Spaces

Santa Clara County Parks

Water Feature

City Boundary

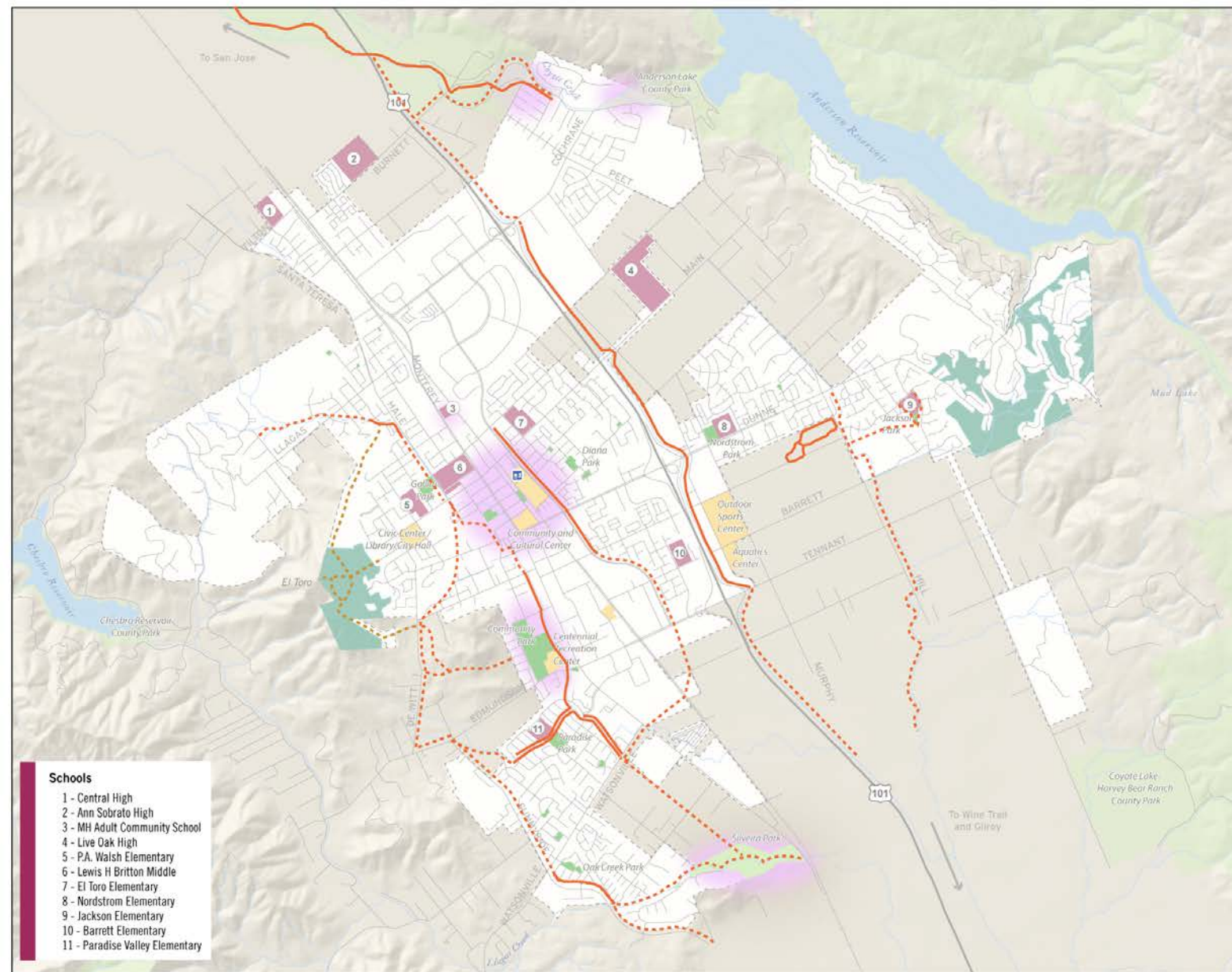
N  
0 0.25 0.5 Miles

Data Sources: City of Morgan Hill Planning Division, Santa Clara County Information Services Department, Digital Globe

May 2016  
M I G

### Schools

- 1 - Central High
- 2 - Ann Sobrato High
- 3 - MH Adult Community School
- 4 - Live Oak High
- 5 - P.A. Walsh Elementary
- 6 - Lewis H Britton Middle
- 7 - El Toro Elementary
- 8 - Nordstrom Elementary
- 9 - Jackson Elementary
- 10 - Barrett Elementary
- 11 - Paradise Valley Elementary



# Potential Bikeways & Trails



## DRAFT Bikeway + Trail Network Map

### Legend

- Existing Bike Lane
- Potential Bikeway
- Intersection Improvements
- Existing Multi-use Trail
- - - Potential Multi-use Trail
- - - Potential Pedestrian Trail
- X Proposed Bicycle/Pedestrian Bridge
- Destinations
- Caltrain Station
- Major Roads
- = Railroads
- Public Facility
- Schools (see inset key)
- City Parks
- Public Open Spaces
- Santa Clara County Parks
- Water Feature
- City Boundary

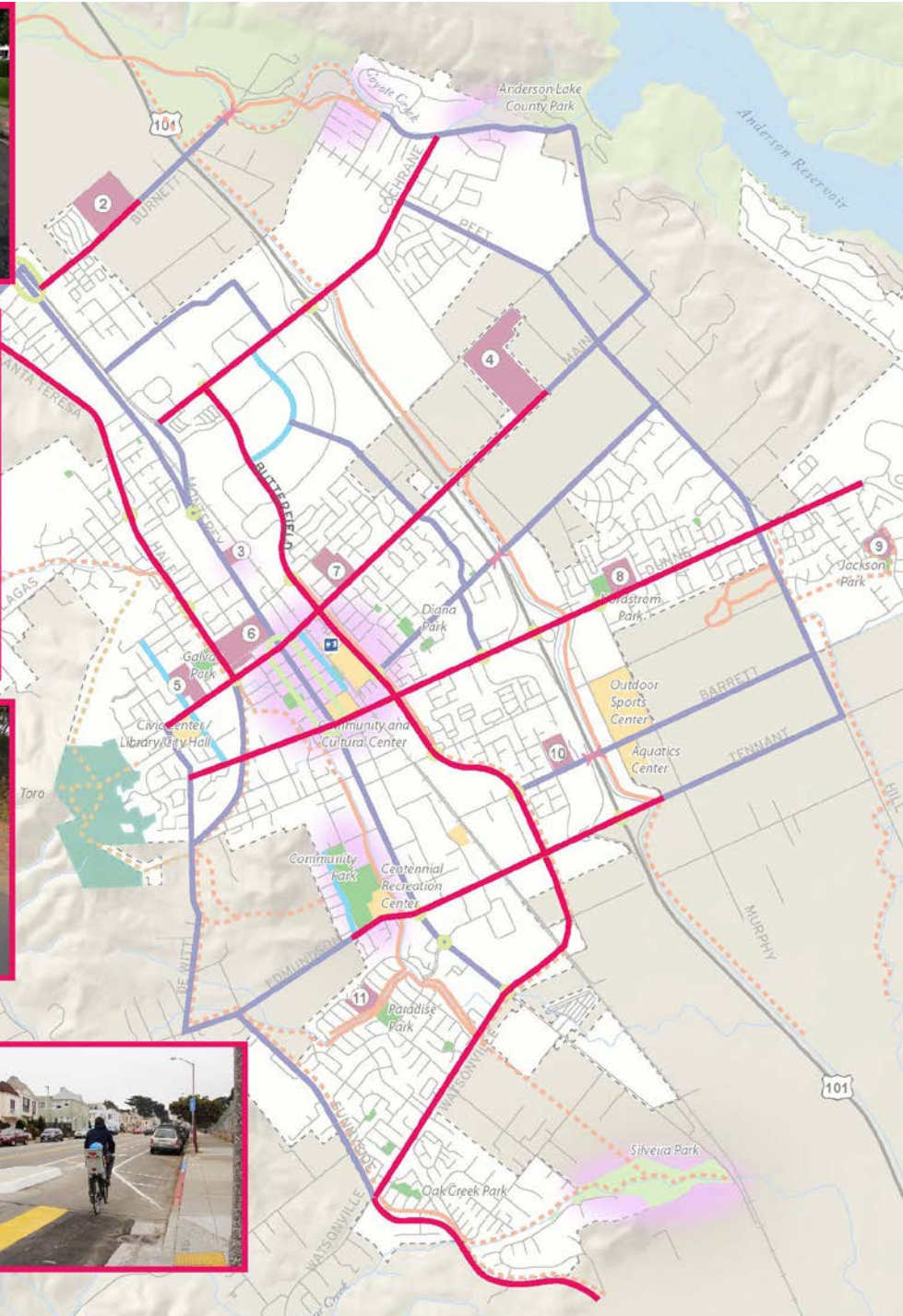
### Schools

- 1 - Central High
- 2 - Ann Sobrato High
- 3 - MH Adult Community School
- 4 - Live Oak High
- 5 - P.A. Walsh Elementary
- 6 - Lewis H Britton Middle
- 7 - El Toro Elementary
- 8 - Nordstrom Elementary
- 9 - Jackson Elementary
- 10 - Barrett Elementary
- 11 - Paradise Valley Elementary



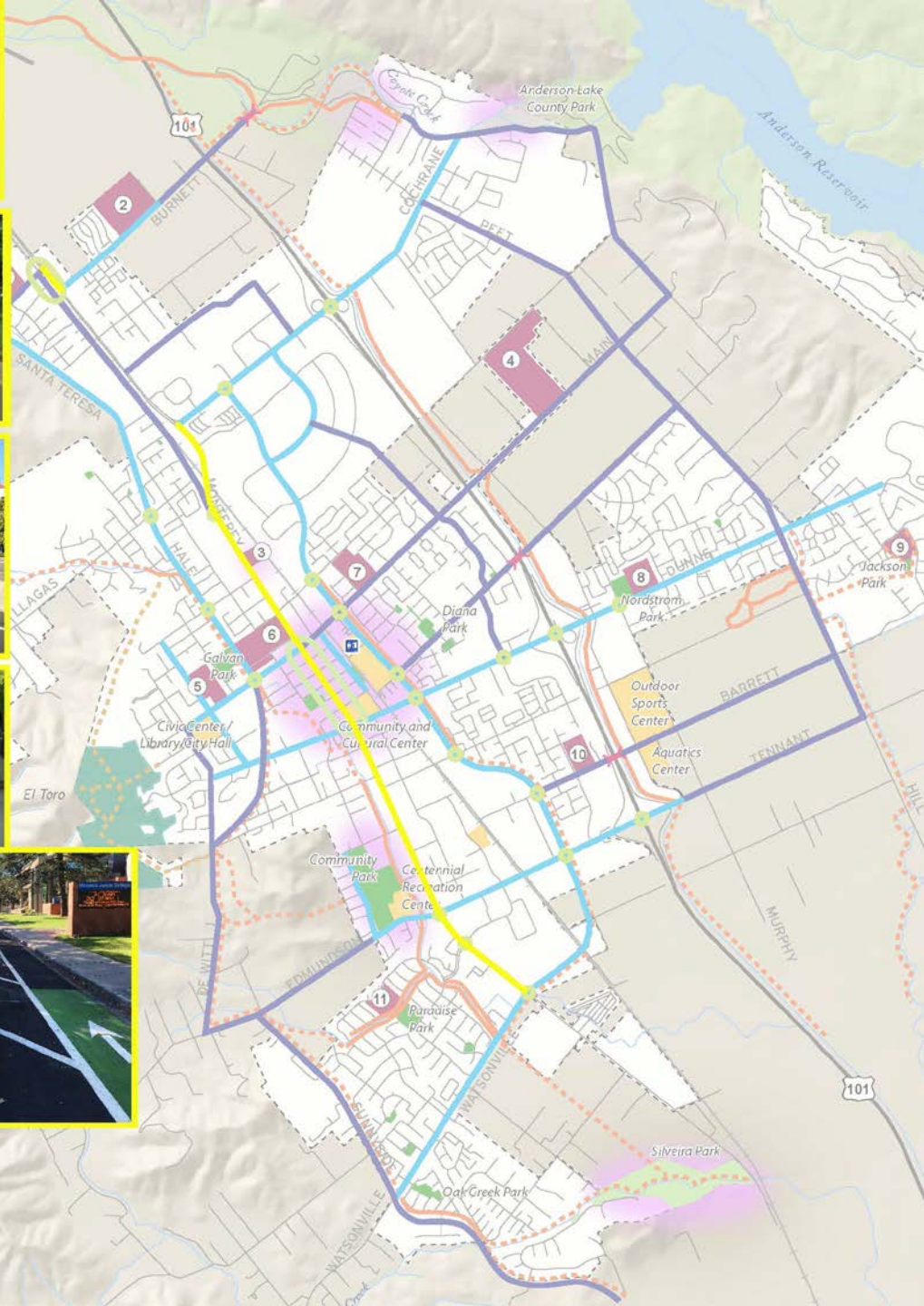


# Buffered Bike Lanes



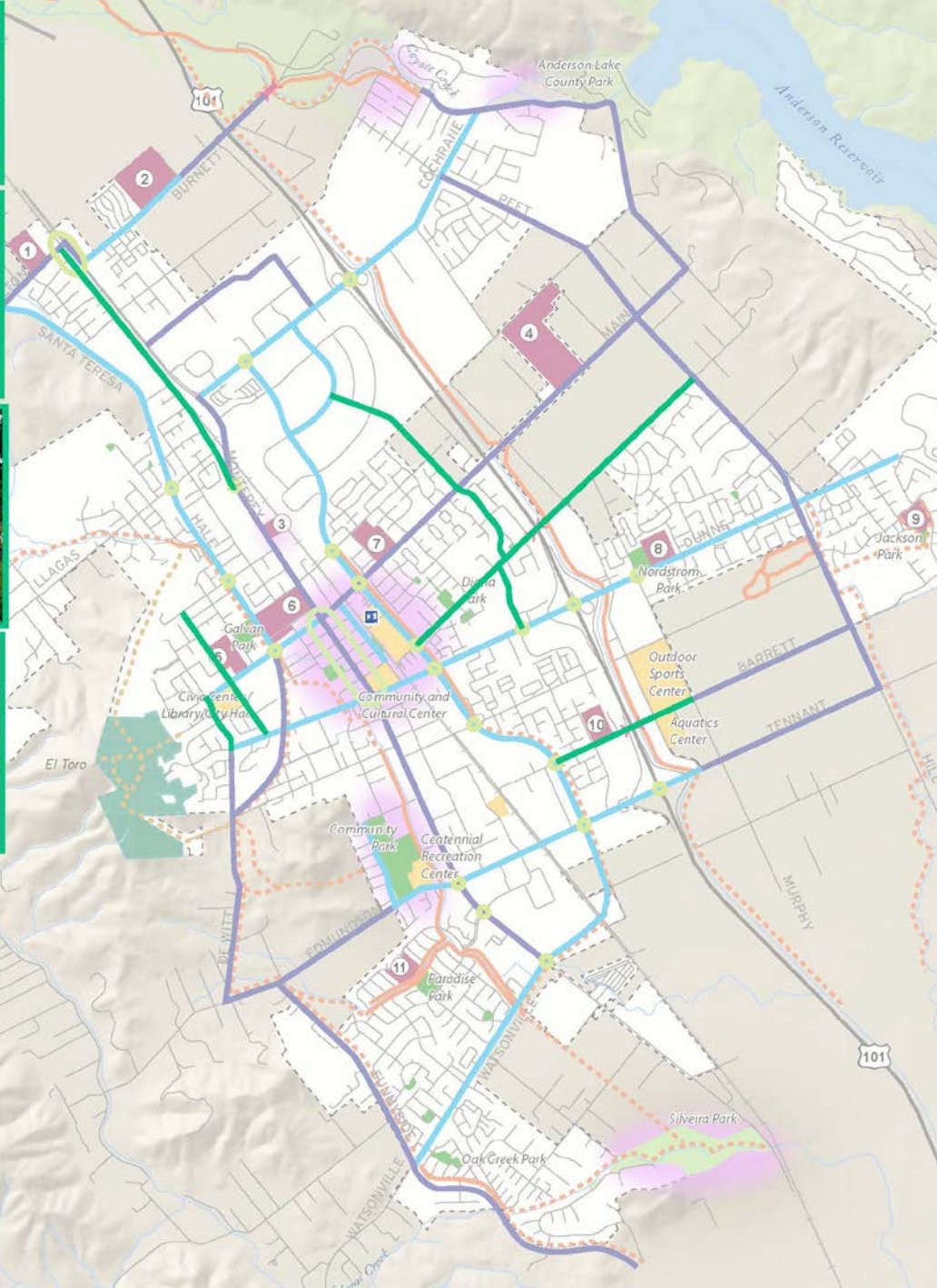


# Protected Bike Lanes





# Bicycle Boulevards



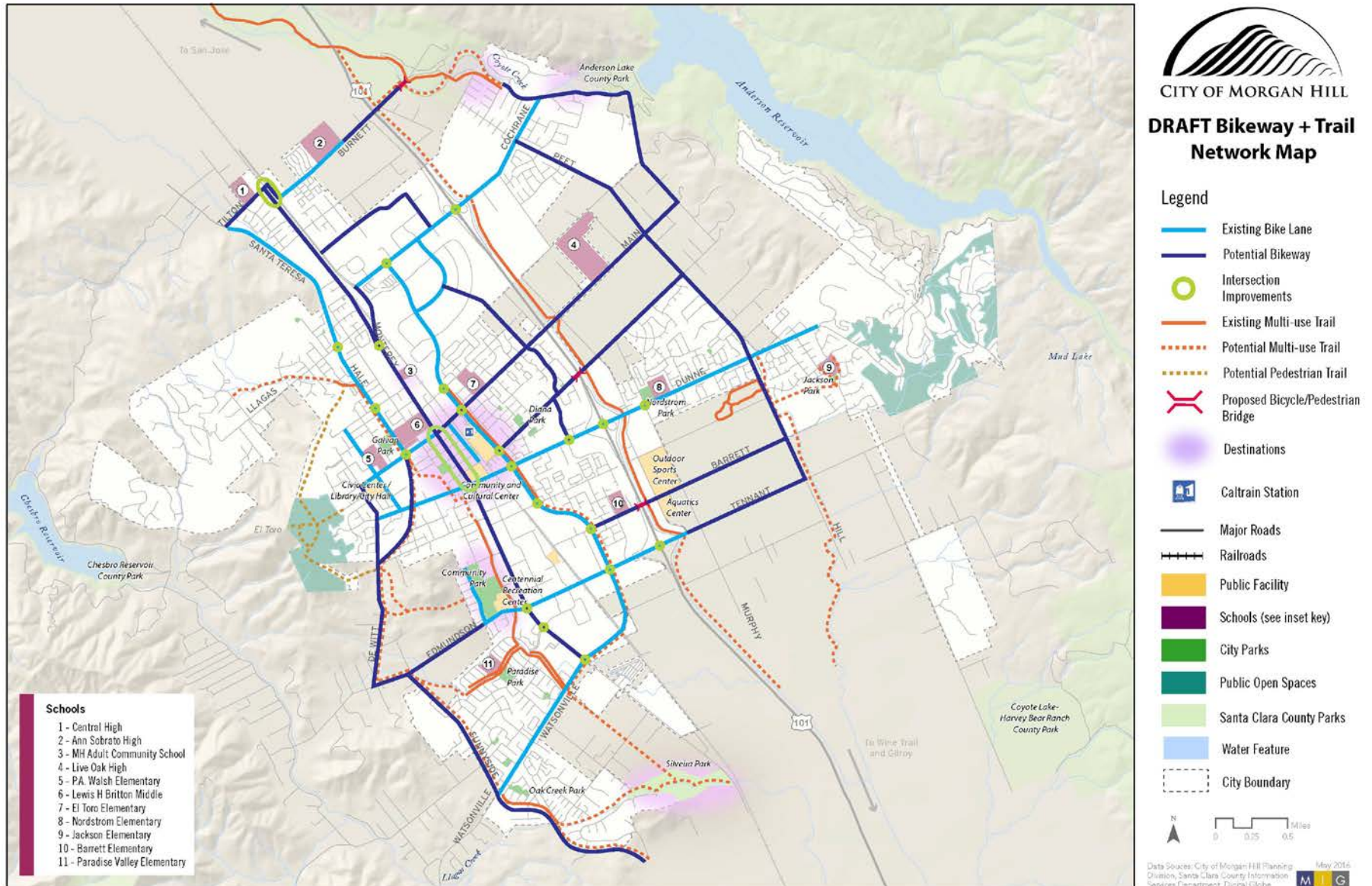


# Intersection Improvements





# Input from the Bicycle Advisory Group



# Bikeways & Trails Discussion

- Are there any potential bikeways or trails missing?
- What are your priority:
  - north-south connections
  - east-west connections
  - gap closures
  - Intersection improvements



# Potential Bikeways & Trails



## DRAFT Bikeway + Trail Network Map

### Legend

- Existing Bike Lane
- Potential Bikeway
- Intersection Improvements
- Existing Multi-use Trail
- - - Potential Multi-use Trail
- - - Potential Pedestrian Trail
- X Proposed Bicycle/Pedestrian Bridge
- Destinations
- Caltrain Station
- Major Roads
- = Railroads
- Public Facility
- Schools (see inset key)
- City Parks
- Public Open Spaces
- Santa Clara County Parks
- Water Feature
- City Boundary

### Schools

- 1 - Central High
- 2 - Ann Sobrato High
- 3 - MH Adult Community School
- 4 - Live Oak High
- 5 - P.A. Walsh Elementary
- 6 - Lewis H Britton Middle
- 7 - El Toro Elementary
- 8 - Nordstrom Elementary
- 9 - Jackson Elementary
- 10 - Barrett Elementary
- 11 - Paradise Valley Elementary



# Park & Facility Policy Discussion



# Development Impact Fees Projection 2015-2028

	Average Revenue Annually	Total Revenue (2015-2028)
Park Impact Fund Projected Revenues	\$1,511,256.61	\$19,646,336
Community Rec. Centers Impact Fund Projected Revenues	\$942,727	\$12,255,454

# Development Impact Fees Projection 2015-2028

Fiscal Year	FY 15-16 YEP	FY 16-17	FY 17-18	FY 18-19	FY 19-20	FY 20-21	FY 21-22	FY 22-23	FY 23-24	FY 24-25	FY 25-26	FY 26-27	FY 27-28
Assumed # of Residential Units	80	340	265	265	250	250	250	250	250	250	250	250	250
<b><u>Park Impact Fund</u></b>													
Fee / Unit	5,241	5,378	5,378	5,378	5,378	5,378	5,486	5,595	5,707	5,821	5,938	6,057	6,178
Projected Revenues	\$2,083,174	\$1,828,520	\$1,425,170	\$1,425,170	\$1,344,500	\$1,344,500	\$1,371,390	\$1,398,818	\$1,426,794	\$1,455,330	\$1,484,437	\$1,514,125	\$1,544,408
<b><u>Community Rec. Centers Impact Fund</u></b>													
Fee / Unit	3,663	3,663	3,663	3,663	3,663	3,663	3,736	3,811	3,887	3,965	4,044	4,125	4,208
Projected Revenues	\$293,040	\$1,245,420	\$970,695	\$970,695	\$915,750	\$915,750	\$934,065	\$952,746	\$971,801	\$991,237	\$1,011,062	\$1,031,283	\$1,051,909

# Park Level of Service Standards

- Quimby Act Standards: 3-5 acres/1,000 residents
- Current standard: **5 acres/1,000 residents.**
- Current Level of Service: **Approx. 4.0 – 4.3 acres/1,000**

# Park Service Calculations

## Calculations:

- City-owned parks: 100% of total acreage
- Privately-owned parks: 50%
- Trails: 100% of total acreage
- Special use facilities: 100%
- School- and County-owned facilities: 100% if joint use agreement (JUA) is in place

# Park Level of Service Standards Discussion

Do we want to change the standards or calculation methods?

Options include:

- A. Retain 5-acre standard and don't count special use facilities
- B. Increase standard to 10-acres/1,000 and retain calculation method
- C. Retain 5-acre standard and calculation method



# Park Level of Service Standards Discussion

What strategies should we employ to increase the City's parks and open space lands to meet the standard?

- Pursue joint use agreements with the County
- Pursue joint use agreements with the School District
- Require new HOA parks to be publically accessible
- Purchase land for new parks and open spaces
- Review all City-owned and public land for additional opportunities



# New Parks

- 2001 Parks and Recreation Master Plan called for 3-4 new **neighborhood parks**; none have been added to-date but Downtown Parks are being designed
- There is interest in an adding a **community park** north of Main

## Bikeways, Trails, Parks and Recreation Master Plan

### Legend

#### City Park Service Areas

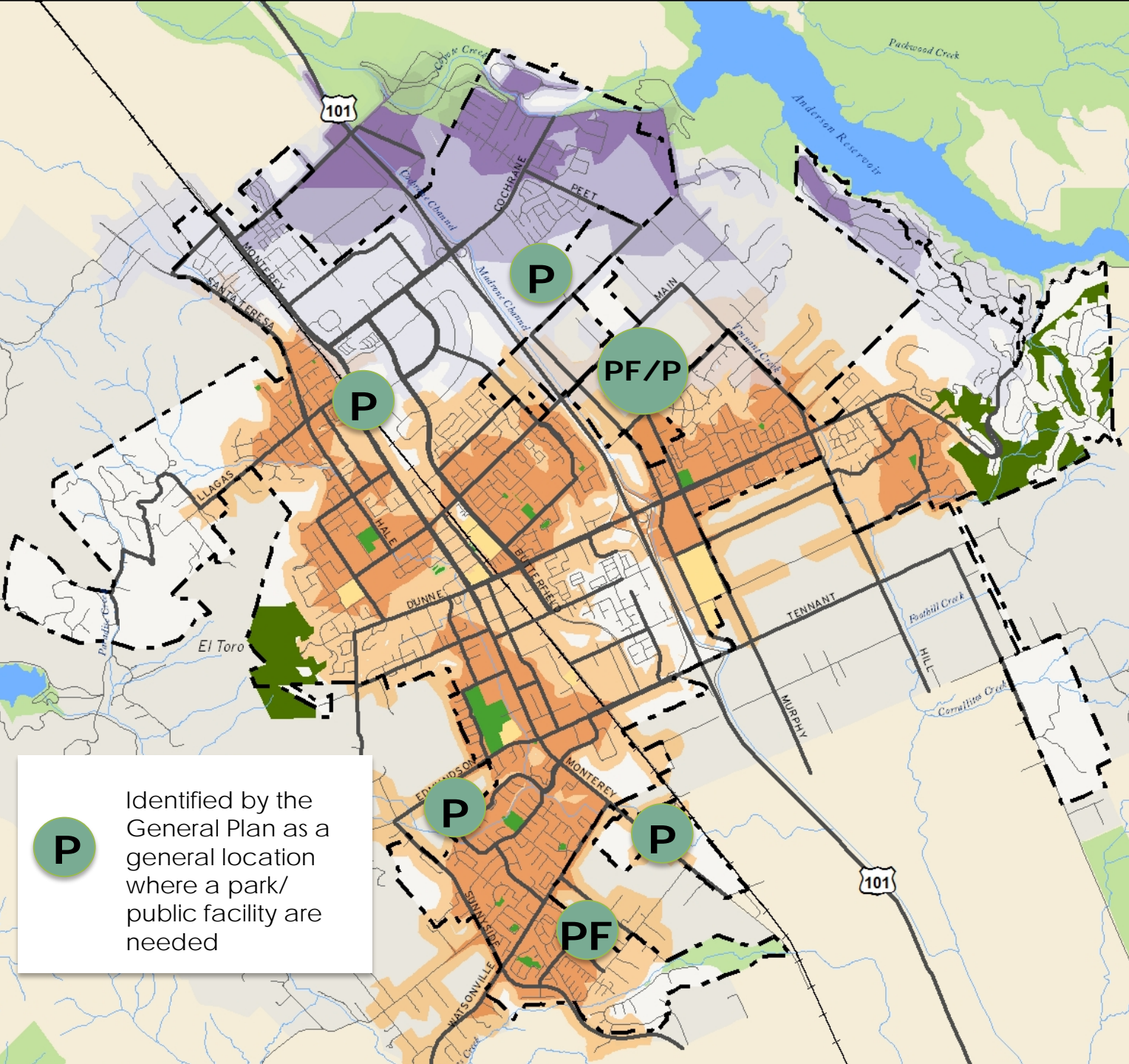
- 1/2 mile
- 1 mile

#### County Park Service Areas

- 1/2 mile
- 1 mile
- 2 mile

- City Boundary
- Major Roads
- Neighborhood Streets
- +

 Railroad
- Water Feature
- Public Facility
- City Parks
- Future City Parks
- Public Open Space
- Santa Clara County Parks
- Sphere Of Influence
- Santa Clara County



P

Identified by the General Plan as a general location where a park/ public facility are needed

# New Parks Discussion

- What realistic goal do we want to set for creating new parks in the planning horizon?
- What areas of town should we target for new neighborhood parks?
- A new community park? Does it make sense to plan for a community park on the eastside of the city with new residential development
- Should that community park include indoor as well as outdoor facilities?
- Which should we prioritize?



# Park Restrooms

- Community and stakeholder group identified as top priority
- The project team recommends adding restrooms to Nordstrom and Paradise Parks with Diana as a slightly lower priority.



# Park Restrooms Discussion

- Does the PRC support adding restrooms to more parks?
- If so, do Nordstrom, Paradise and Diana sound like the right priorities?

# Overarching sports & recreation facility topics

- Many of the desired recreation facilities will require market studies/market models.
- The soccer fields at the sports complex operate with no on-going costs because it's a shared regional facility.

# Regional Recreation Discussion

- What is the right balance between revenue generation / cost recovery and community amenities for facilities that attract regional visitors and tourists?
- What about improvements to existing facilities?



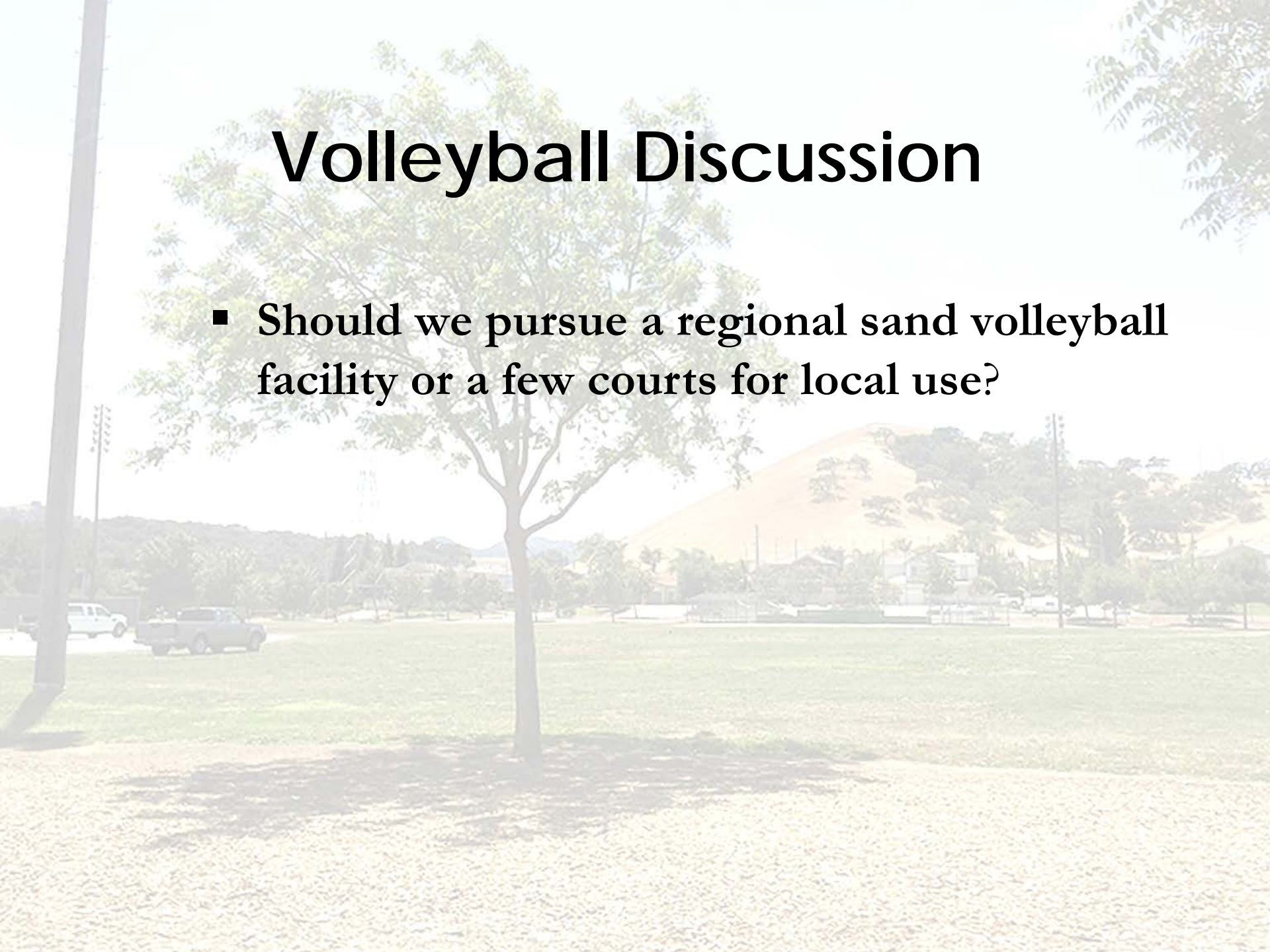
# Volleyball

- There is community support for adding sand volleyball courts to Morgan Hill's park system.
- Two approaches to serving volleyball needs:
  1. Regional sand volleyball facility
  2. A few sand volleyball courts in a neighborhood or community park



# Volleyball Discussion

- Should we pursue a regional sand volleyball facility or a few courts for local use?



# Gymnasiums

- There is a high level of need for additional gymnasium space
- A new gymnasium could be a new City facility or a joint use facility with the school district.

# Gymnasiums Discussion

- Where should a new gymnasium be located?
- Should the gymnasium be a joint-use or City facility?

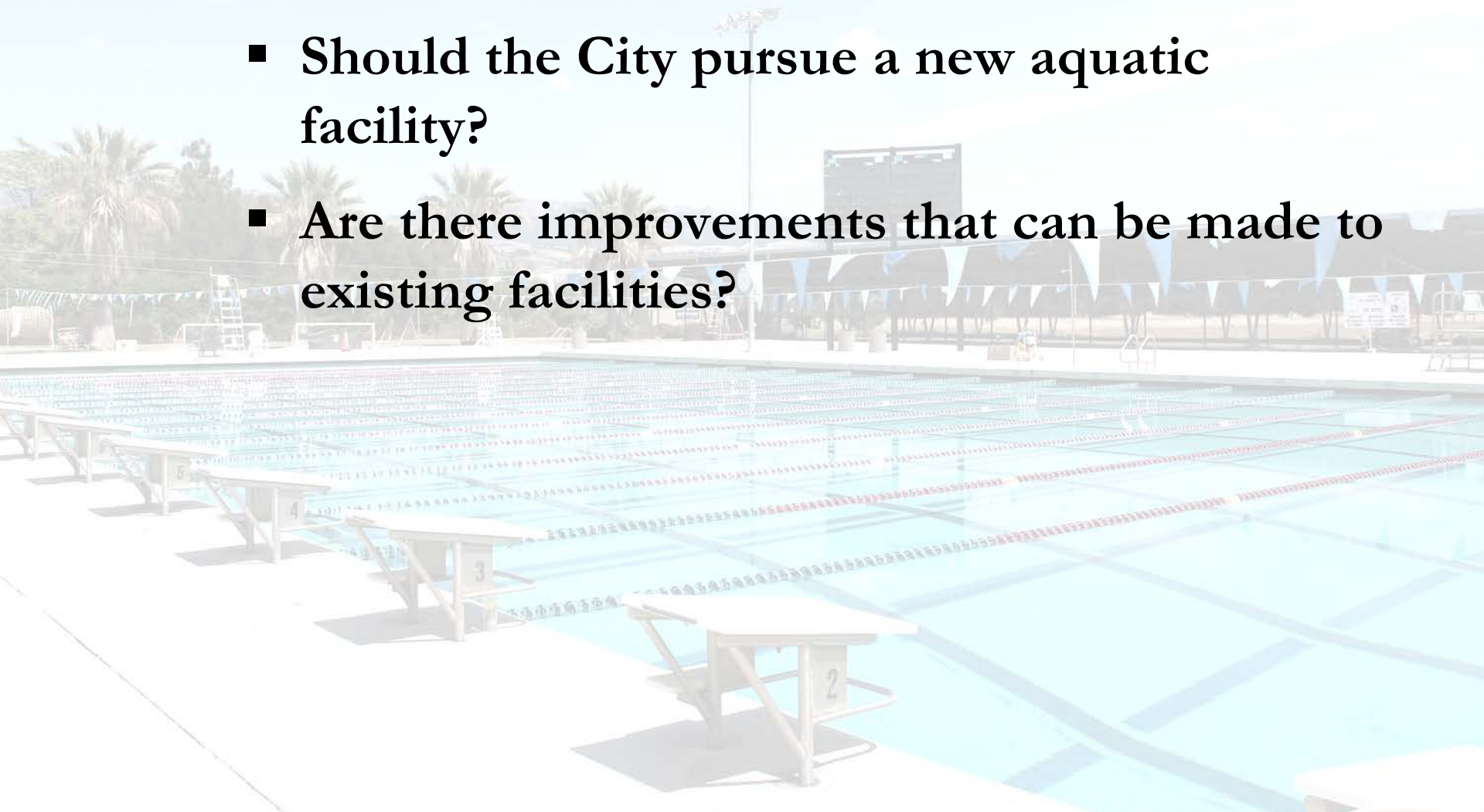
# Aquatic Facilities

- More aquatic facilities ranked as a top priority in the community survey.
- The City already provides a high level of aquatic facilities for its population.
- Aquatic facilities are very expensive to build, operate and maintain.



# Aquatic Facilities Discussion

- Should the City pursue a new aquatic facility?
- Are there improvements that can be made to existing facilities?



# Diamond Fields

- The City plans to develop a regional baseball complex in the SE Quadrant

# Diamond Fields Discussion

- How should a regional baseball complex be operated?





# Historic Society and Villa Mira Monte

- Villa Mira Monte: 2 ½ acres including the Morgan Hill Museum and Hiram Morgan Hill House
- Historical Society's proposal to the City includes capital improvements at cost of \$1.2 in Phase 1 and \$4 million total (Phases 1-3).
- Stakeholder group supports the enhancement of historic, cultural and educational facilities and programs at that site.
- Community survey showed historical education and preservation as the lowest programming priority

# Villa Mira Monte Discussion

- What role should the City take in the partnership with the historic Site? Some options:
  - Historic Society's current proposal
  - Hybrid proposal (City staff works with Historic Society)
  - Maintain current relationship
- How much of a priority should this be in the Master Plan?
- If improvements are going to be made, what should be included?
- How can this site be integrated into our park system, given its proximity to downtown and the new parks there?

# Improvements and Changes to Existing Parks & Facilities

- Friendly Inn in Galvan Park
- Corporation yard at Community Park



# Changes to Existing Parks & Facilities Discussion

- Do we want to re-purpose the Friendly Inn at Galvan Park as a new Community Center? What would the best uses of this be?
- How could we use the corporation yard at Community Park to best meet our needs?
- How do these facilities compare to other priorities?

# Community and Senior Services

- The City's current role is as a facilitator and host of community services in partnership with many nonprofit entities.
- This helps bring services to Morgan Hill and has been successful.
- There are unmet needs for community and senior social services.

# Community and Senior Services Discussion

- Should the City expand its role in providing these services, or maintain its current functions?
- If the City's role expands, what should the focus areas/priorities be? Some options:
  - A. Expand and become a direct provider of more social services.
  - B. Focus on partnerships and collaborate with organizations to expand senior services.
  - C. Maintain its current role and level of service provision.



# Outdoor and Mobile Programs Brainstorm

- There is a high level of interest among staff and community members for taking park amenities rec programs “on the road.”
- Mobile programs extend current services to under-served neighborhoods and populations and test new programs/features
- Mobile programming ideas have included...













# Outdoor and Mobile Programs Brainstorm

- Do you agree with pursuing mobile programs?
- Which programs should be priorities?
- Brainstorm!

# Open Discussion

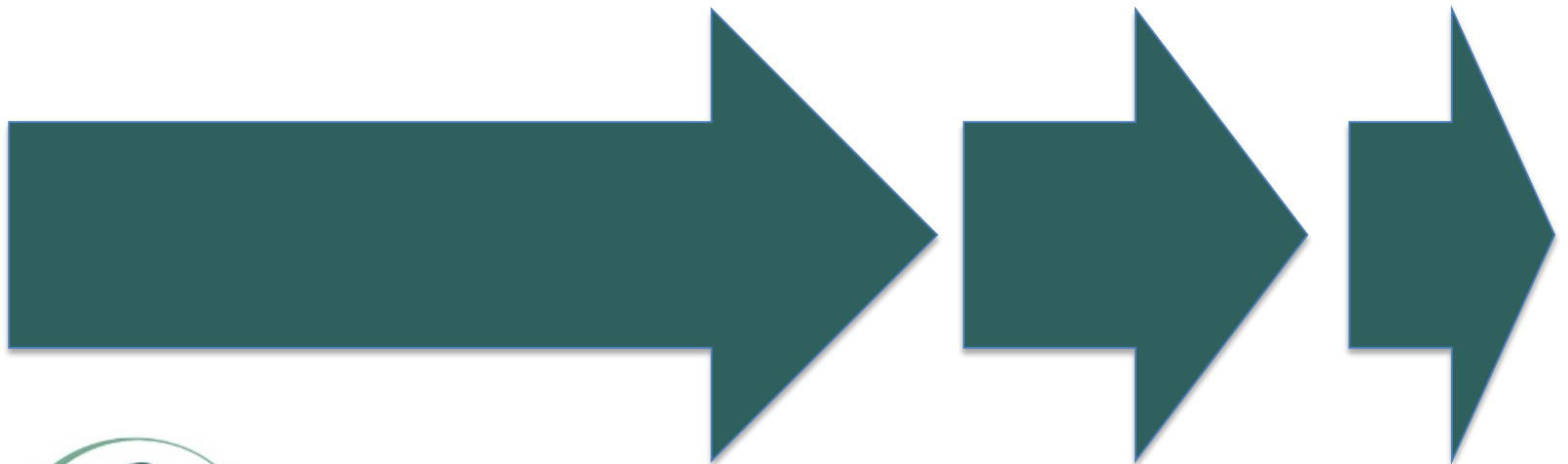
- Would you like to add anything you didn't see here?
- Are we heading in the right direction?





# Next Steps

- City Council priorities meeting (June)
- Youth engagement (summer)
- Draft Plan (late summer / early fall )



# Thank You

