



# Bikeways, Trails, Parks and Recreation Master Plan Update

City Council Work Session

June 22, 2016



**Item # 1**

**AGENDA DATE: 06/22/16  
STAFF PRESENTATION**

A large, mature tree with a thick trunk and dense green foliage stands in the foreground of a park. A paved path leads from the right side of the tree towards the background. In the distance, a playground with various equipment is visible on a grassy field. The scene is bright and sunny, with shadows cast on the grass.

# Introduction

# Goals for Tonight

- Review Master Plan progress
- Share key outreach themes
- Discuss policy direction and potential projects for:
  - Parks
  - Recreation Facilities
  - Bikeways
  - Trails
- Share next steps
- Receive Council direction
  - How should the City prioritize resources for future parks, recreation facilities and bikeways?





# Coordinating, Consolidating and Updating

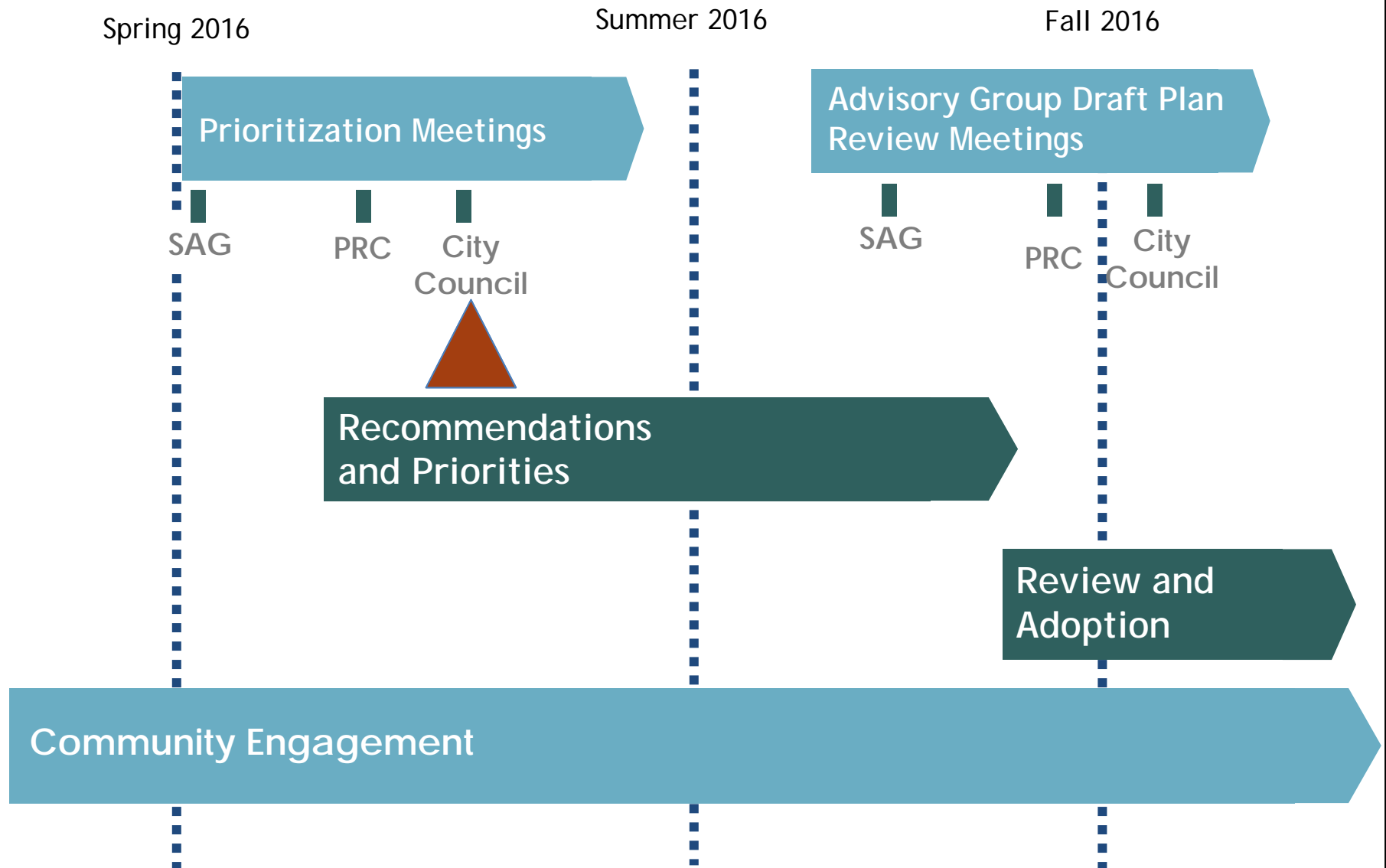
- Bikeways Master Plan (2008)
- Trails and Natural Resources Study (2007)
- Parks, Facilities and Recreation Programming Master Plan (2002)



**Bikeways, Trails,  
Parks and  
Recreation  
Master Plan  
(2016)**



# City of Morgan Hill Bikeways, Trails, Parks and Recreation Master Plan



A large group of people, mostly young adults, are sitting on green bleachers outdoors. They are dressed in casual summer clothing like t-shirts, tank tops, and jeans. In the background, there is a large building with a red-tiled roof and some trees. The scene is bright and sunny.

# Discussion Questions



# Parks and Recreation Priorities Discussion

- Should the City prioritize a new community park over new neighborhood parks?
- Does it make sense for the City to focus on neighborhood and community parks, while HOAs and multi-family complexes provide smaller “pocket parks”?
- What other considerations should we carry forward?



# Parks and Recreation Priorities Discussion

- Should the Villa Mira Monte site be integrated into the City's park system?
- If yes, how can the City best balance the Historic Society's proposed capital improvements and operational needs with other community parks and recreation needs and resources?

# Parks and Recreation Priorities Discussion

- Given that our draft project list costs exceeds projected funding, what should the City prioritize?
  - New park facilities
  - Regional sports facilities
  - Recreation facilities



# Bikeways and Trails Priorities Discussion

- Do you agree with these priorities?
- Are there additional bikeways and trails we should be considering?





# Stakeholder and Community Engagement

A large crowd of people is seated on lawn chairs on a grassy field, facing a stage area. In the background, there is a large, curved, orange-colored building, possibly a community center or school. Several banners are visible on the building, including one for 'RAMADA' and another for 'PBID'. The scene is outdoors, with trees and a clear sky in the background. The overall atmosphere suggests a community event or festival. The text 'Stakeholder and Community Engagement' is overlaid in the center of the image.

# Community Outreach To Date

- Intercept Surveys
- Stakeholder Advisory Group Meetings
- Community Workshop
- Mapita Online Survey
- PRC Meetings and Work Session
- Online Community Survey



[www.mhparksplan.org](http://www.mhparksplan.org)

# Outreach Themes

- **Play:** Diverse, varied types of equipment and experiences
- **Connections:** Safe walking and biking routes
- **Amenities:** More shade and restrooms in parks
- **Destinations:** Continued support for large facilities for residents and visitors





# Parks & Facilities



# Neighborhood and Community Parks

- Strong support for developing a **new community park** north of Main as the population grows
- 2001 Parks and Recreation Master Plan called for 3-4 new **neighborhood parks**; none have been added to-date but Downtown Parks are being designed
- Input to date prioritizes a large (<10 acre) community park over new neighborhood parks
- Co-locate neighborhood parks with schools when possible

# Neighborhood and Community Parks

- Community support for new and improved amenities in existing neighborhood parks, including:
  - Restroom facilities
  - Shade structures
  - Improved play environments
  - Outdoor fitness equipment





## Bikeways, Trails, Parks and Recreation Master Plan

### Legend

#### City Park Service Areas

- 1/2 mile
- 1 mile

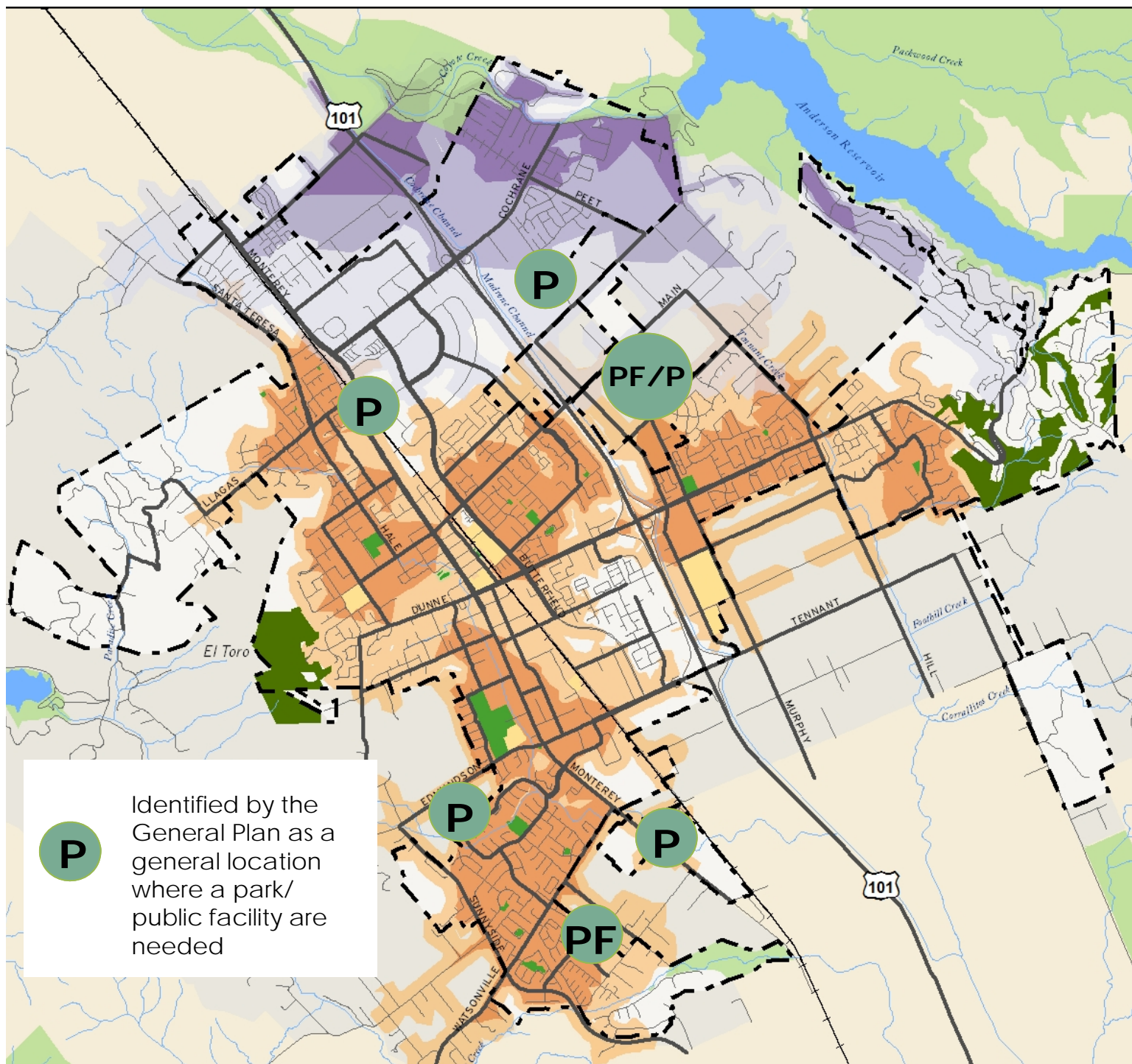
#### County Park Service Areas

- 1/2 mile
- 1 mile
- 2 mile

- City Boundary
- Major Roads
- Neighborhood Streets
- Railroad
- Water Feature
- Public Facility
- City Parks
- Future City Parks
- Public Open Space
- Santa Clara County Parks
- Sphere Of Influence
- Santa Clara County



Data Source: City of Morgan Hill Planning  
Division, Santa Clara County Information  
Services Department, DigitalGlobe



P

Identified by the  
General Plan as a  
general location  
where a park/  
public facility are  
needed

# Regional Sports Facilities

- Regional sports facilities are a catalyst for sports tourism and economic development
- There is support for growing the network of regional sports facilities
  - These can operate at relatively low cost to the City
  - Market research will be needed to assess viability of new ideas
  - Benefits and impacts to residents should be considered
- The current facility use standard is 60% local access and 40% regional /non-local

# Historic Society and Villa Mira Monte

- Villa Mira Monte: 2 ½ acres including the Morgan Hill Museum and Hiram Morgan Hill House
- The Historical Society has proposed a partnership with the City and capital improvements of \$1.2M in Phase 1 and \$4M total (3 Phases)
- The stakeholder group, PRC and Planning Commission support the City taking on a role in the property to protect and enhance the City's historic, cultural and educational resources



# Other Key Topics

## ■ Senior Social Services

- The City's role is as a facilitator and host of community services in partnership with nonprofits
- Expansion will be needed to meet the needs of an aging population

## ■ Aquatic Facilities

- Support for additional facilities
- Opportunity to expand capacity through joint use and additional hours





# Other Key Topics

- Joint Use Agreements
  - Strong support to work with the School District to expand access and share resources through JUAs
  - Joint use could potentially provide more resident access to fields, gymnasiums and aquatic facilities
  
- Repurposed Facilities
  - The Friendly Inn could be re-purposed as a Community Center serving adjacent neighborhoods

# Parks and Recreation Priorities Discussion

- Should the City prioritize a new community park over new neighborhood parks?
- Does it make sense for the City to focus on neighborhood and community parks, while HOAs and multi-family complexes provide smaller “pocket parks”?
- What other considerations should we carry forward?

# Parks and Recreation Priorities Discussion

- Should the Villa Mira Monte site be integrated into the City's park system?
- If yes, how can the City best balance the Historic Society's proposed capital improvements and operational needs with other community parks and recreation needs and resources?



# Parks and Recreation Priorities Discussion

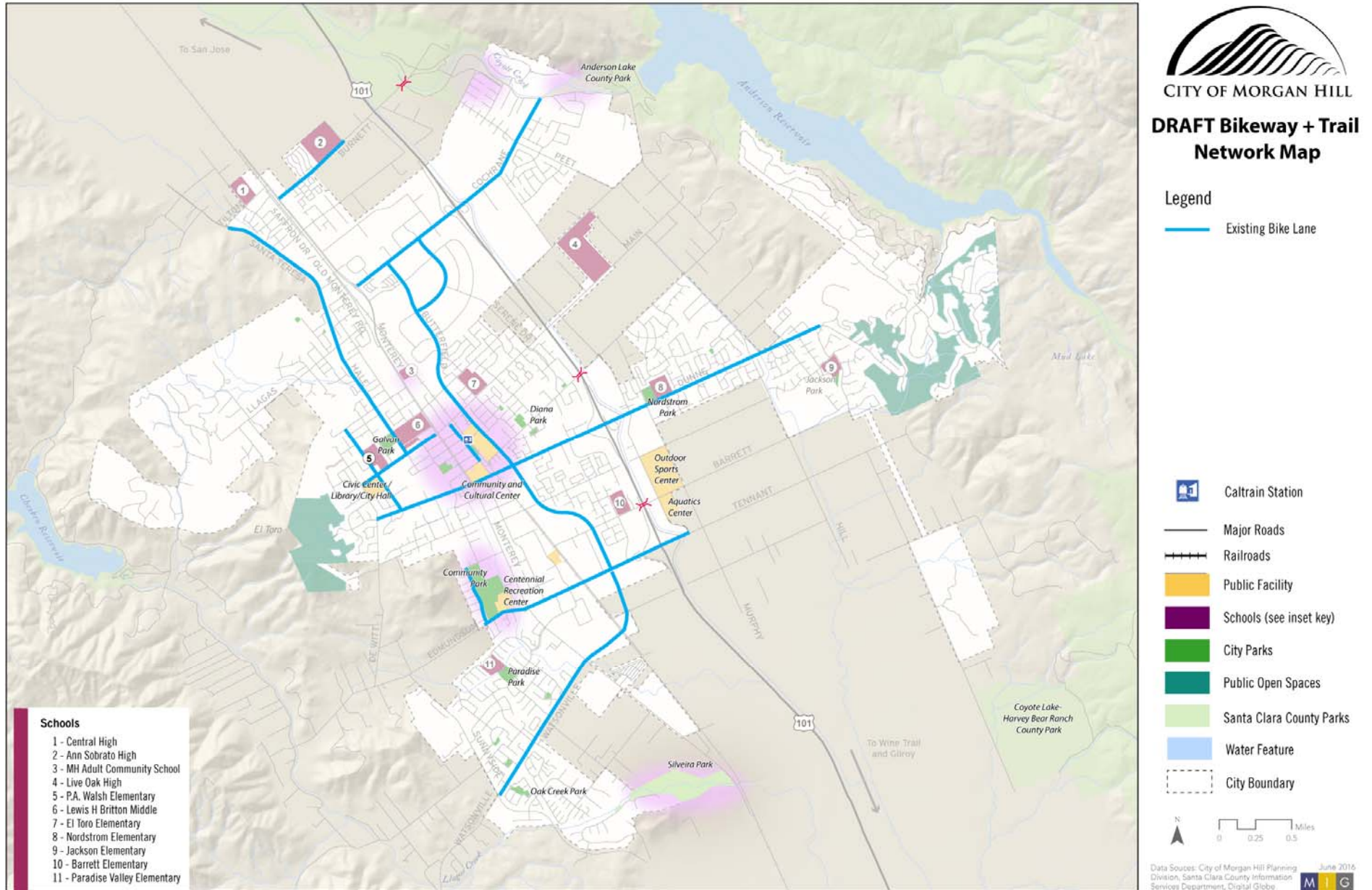
- Given that our draft project list costs exceeds projected funding, what should the City prioritize?
  - New park facilities
  - Regional sports facilities
  - Recreation facilities



# Bikeways & Trails

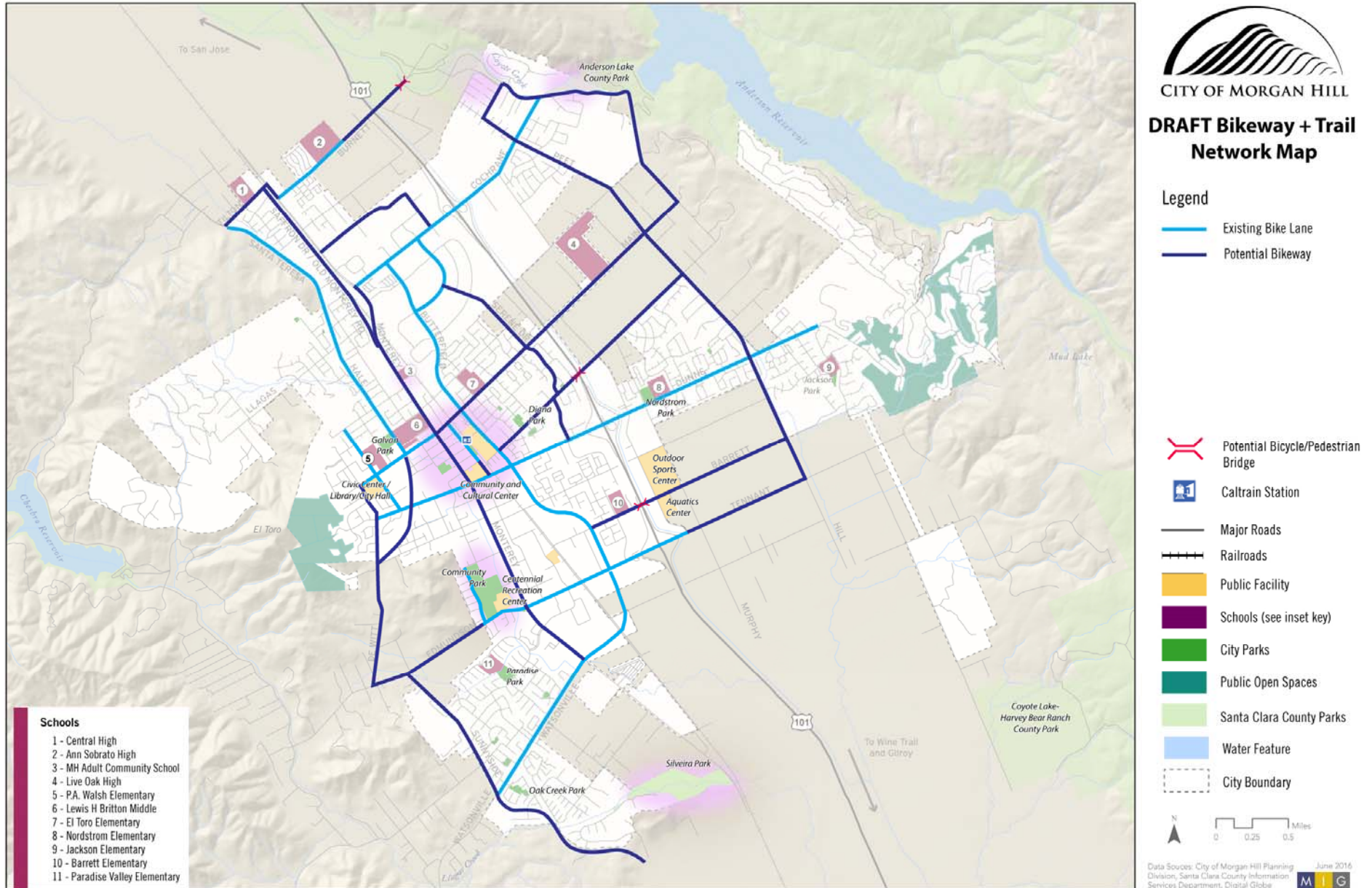


# Existing Bikeways





# Potential Bikeways



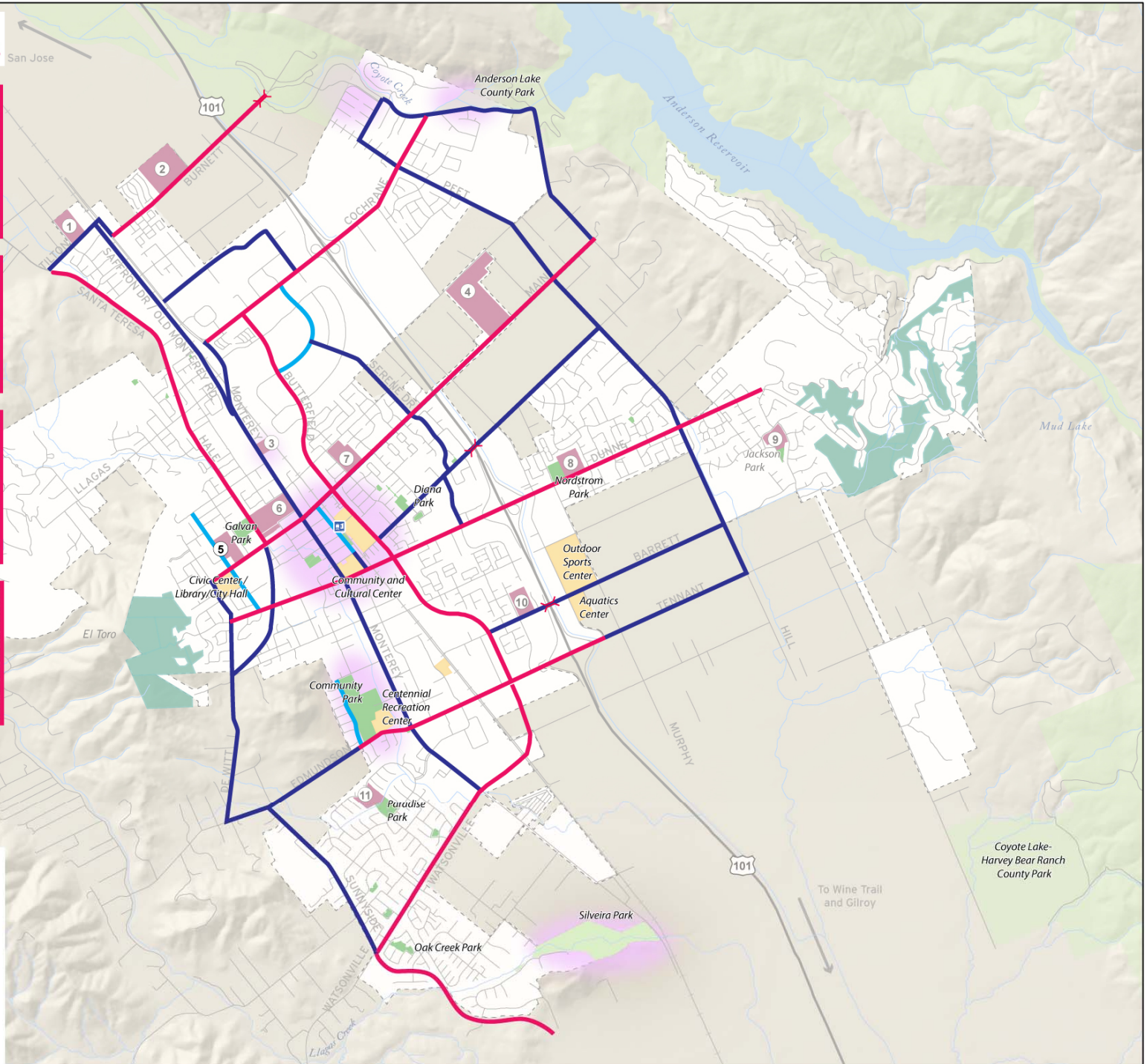


## Potential Buffered Bike Lanes



### Schools

- 1 - Central High
- 2 - Ann Sobrato High
- 3 - MH Adult Community School
- 4 - Live Oak High
- 5 - P.A. Walsh Elementary
- 6 - Lewis H Britton Middle
- 7 - El Toro Elementary
- 8 - Nordstrom Elementary
- 9 - Jackson Elementary
- 10 - Barrett Elementary
- 11 - Paradise Valley Elementary



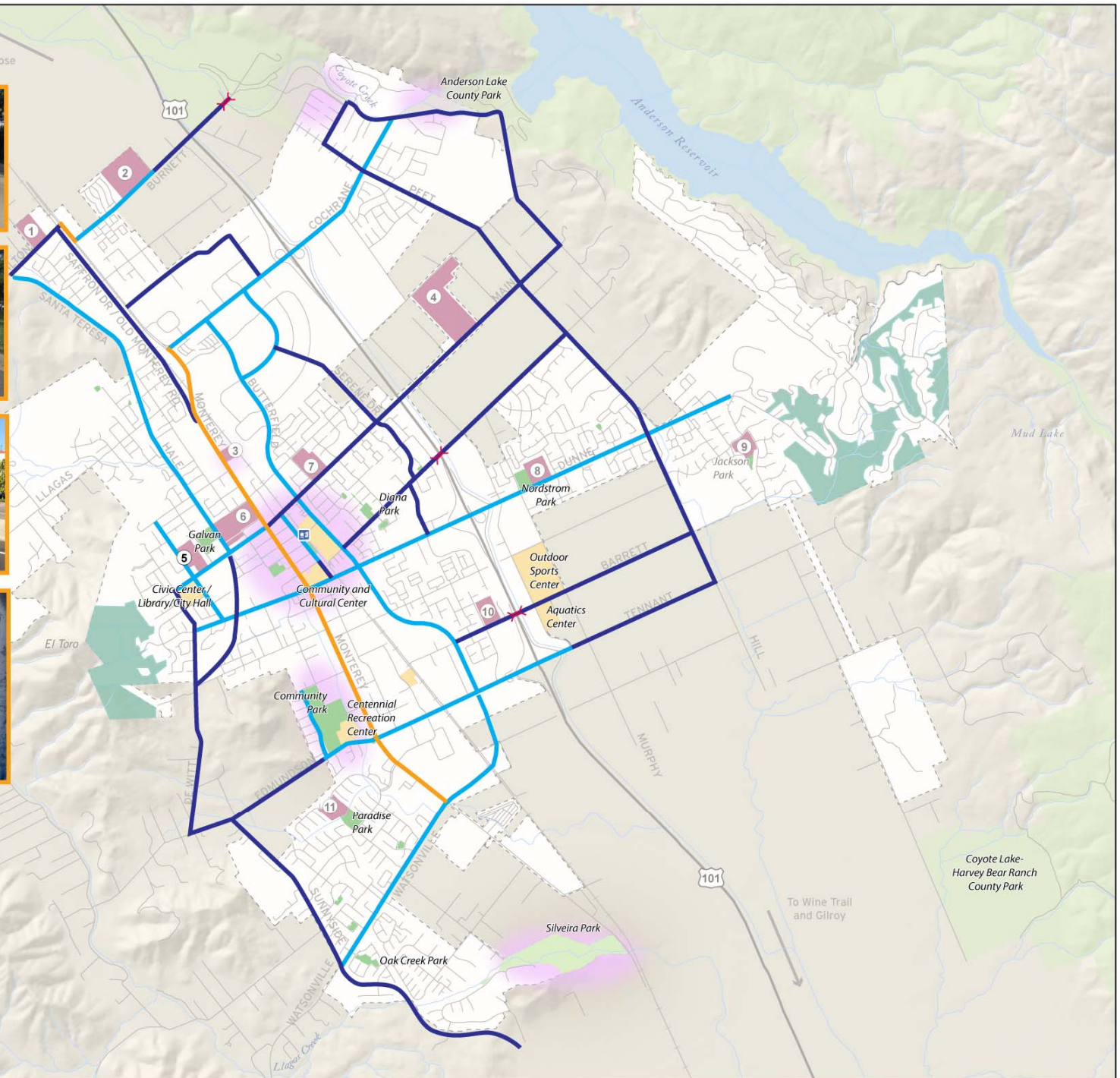


## Potential Protected Bike Lanes



### Schools

- 1 - Central High
- 2 - Ann Sobrato High
- 3 - MH Adult Community School
- 4 - Live Oak High
- 5 - P.A. Walsh Elementary
- 6 - Lewis H Britton Middle
- 7 - El Toro Elementary
- 8 - Nordstrom Elementary
- 9 - Jackson Elementary
- 10 - Barrett Elementary
- 11 - Paradise Valley Elementary



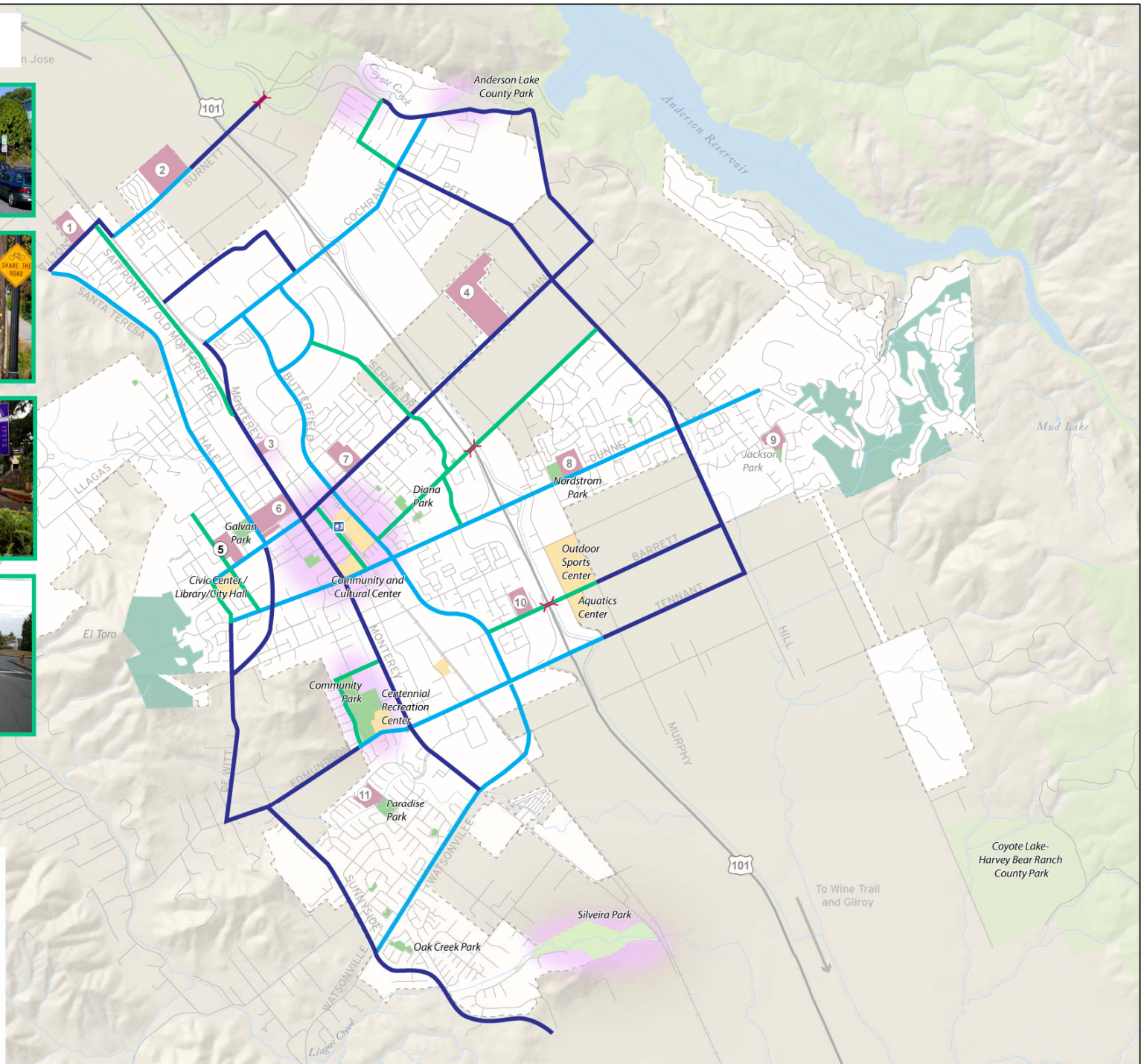


## Potential Bike Boulevards



### Schools

- 1 - Central High
- 2 - Ann Sobrato High
- 3 - MH Adult Community School
- 4 - Live Oak High
- 5 - P.A. Walsh Elementary
- 6 - Lewis H Britton Middle
- 7 - El Toro Elementary
- 8 - Nordstrom Elementary
- 9 - Jackson Elementary
- 10 - Barrett Elementary
- 11 - Paradise Valley Elementary



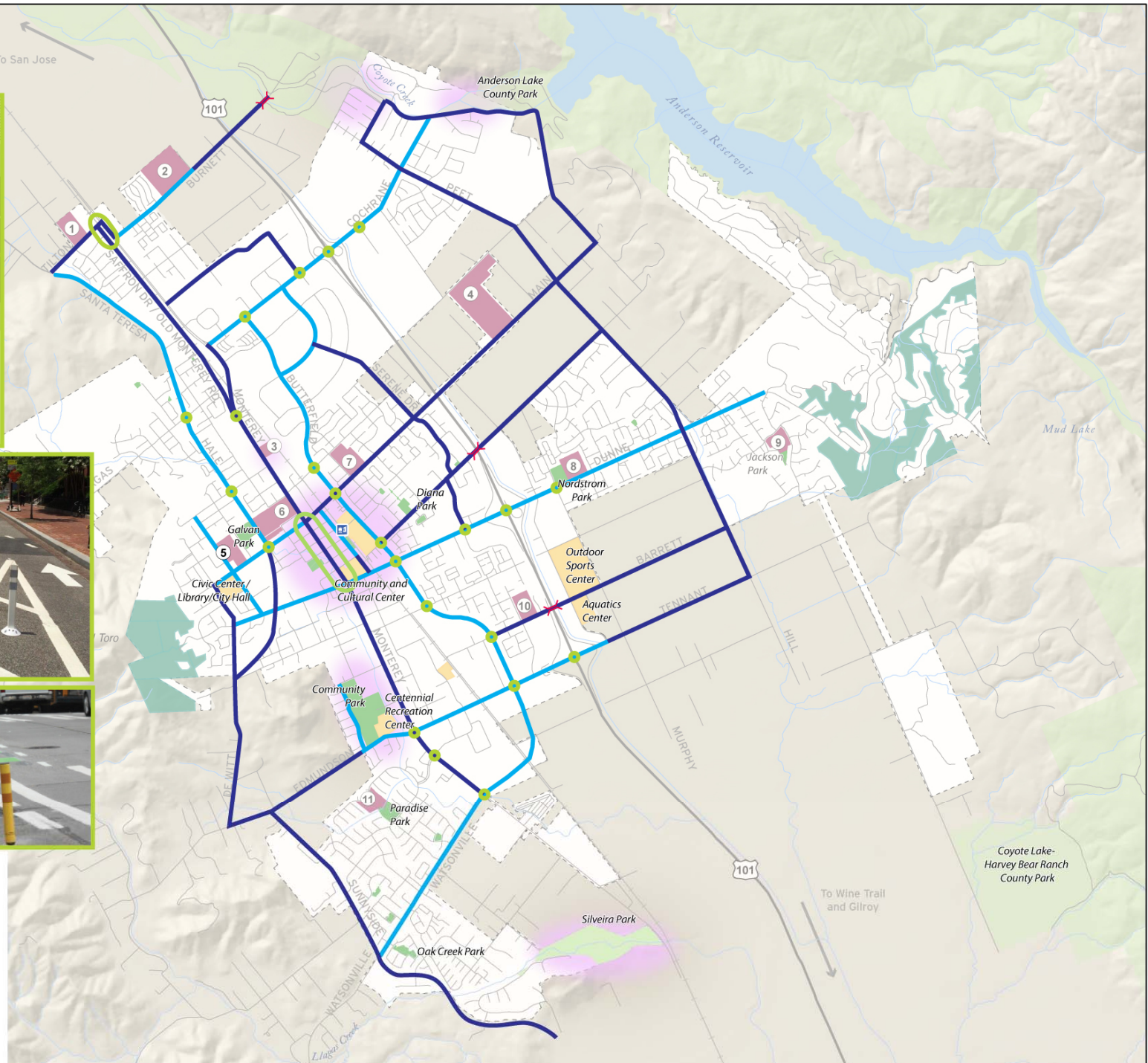


## Potential Intersection Improvements



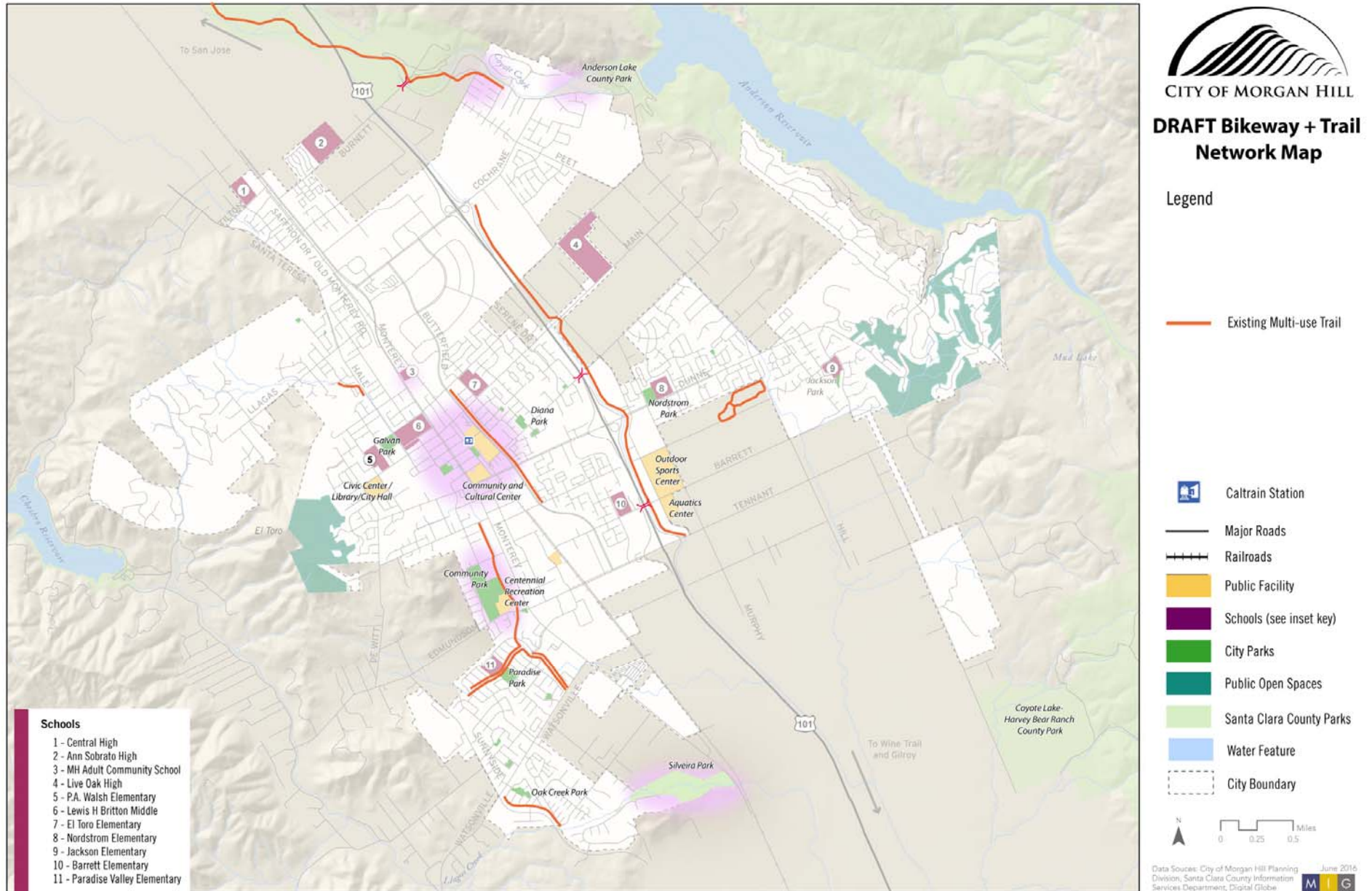
### Schools

- 1 - Central High
- 2 - Ann Sobrato High
- 3 - MH Adult Community School
- 4 - Live Oak High
- 5 - P.A. Walsh Elementary
- 6 - Lewis H Britton Middle
- 7 - El Toro Elementary
- 8 - Nordstrom Elementary
- 9 - Jackson Elementary
- 10 - Barrett Elementary
- 11 - Paradise Valley Elementary

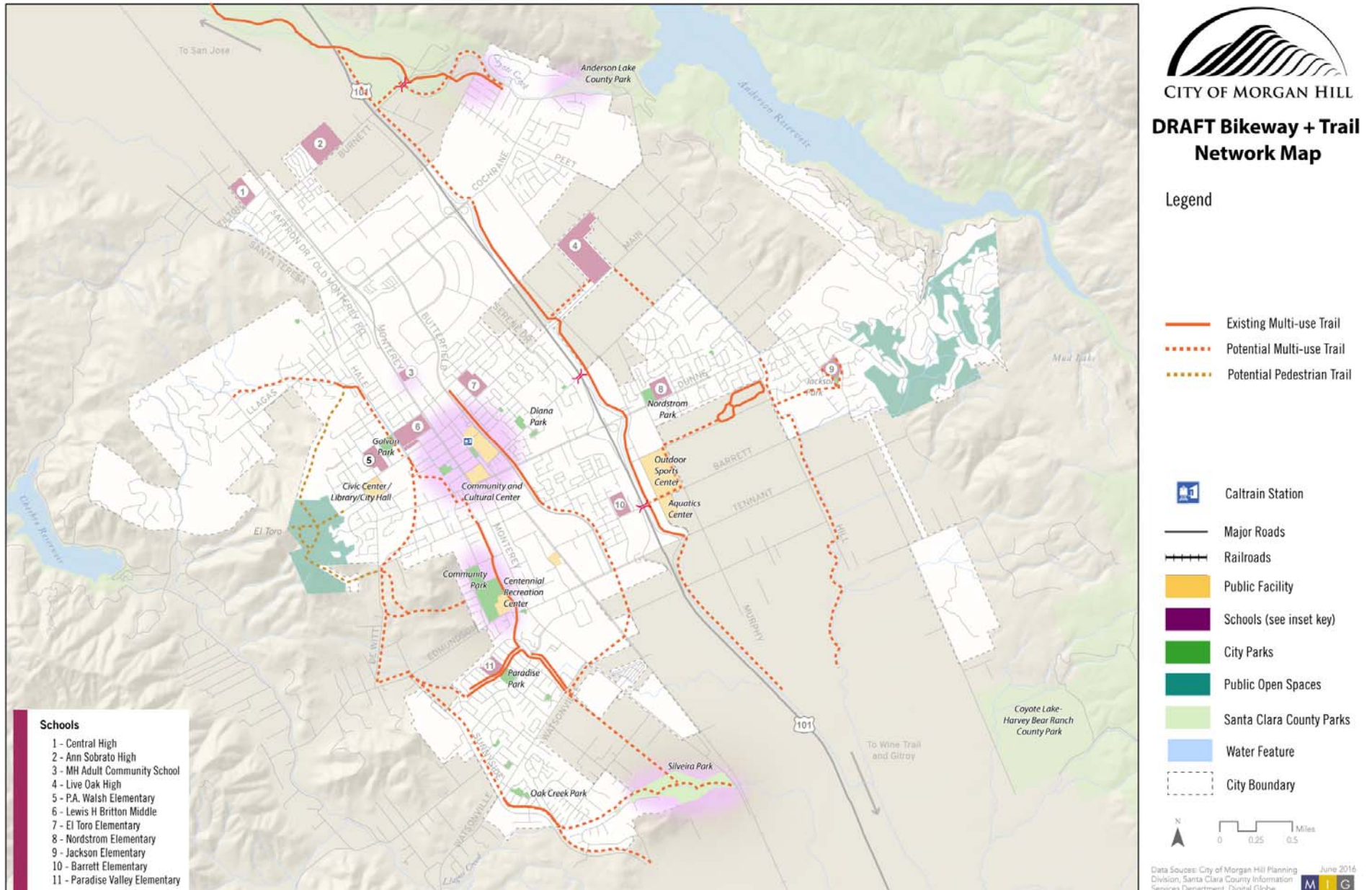




# Existing Trails

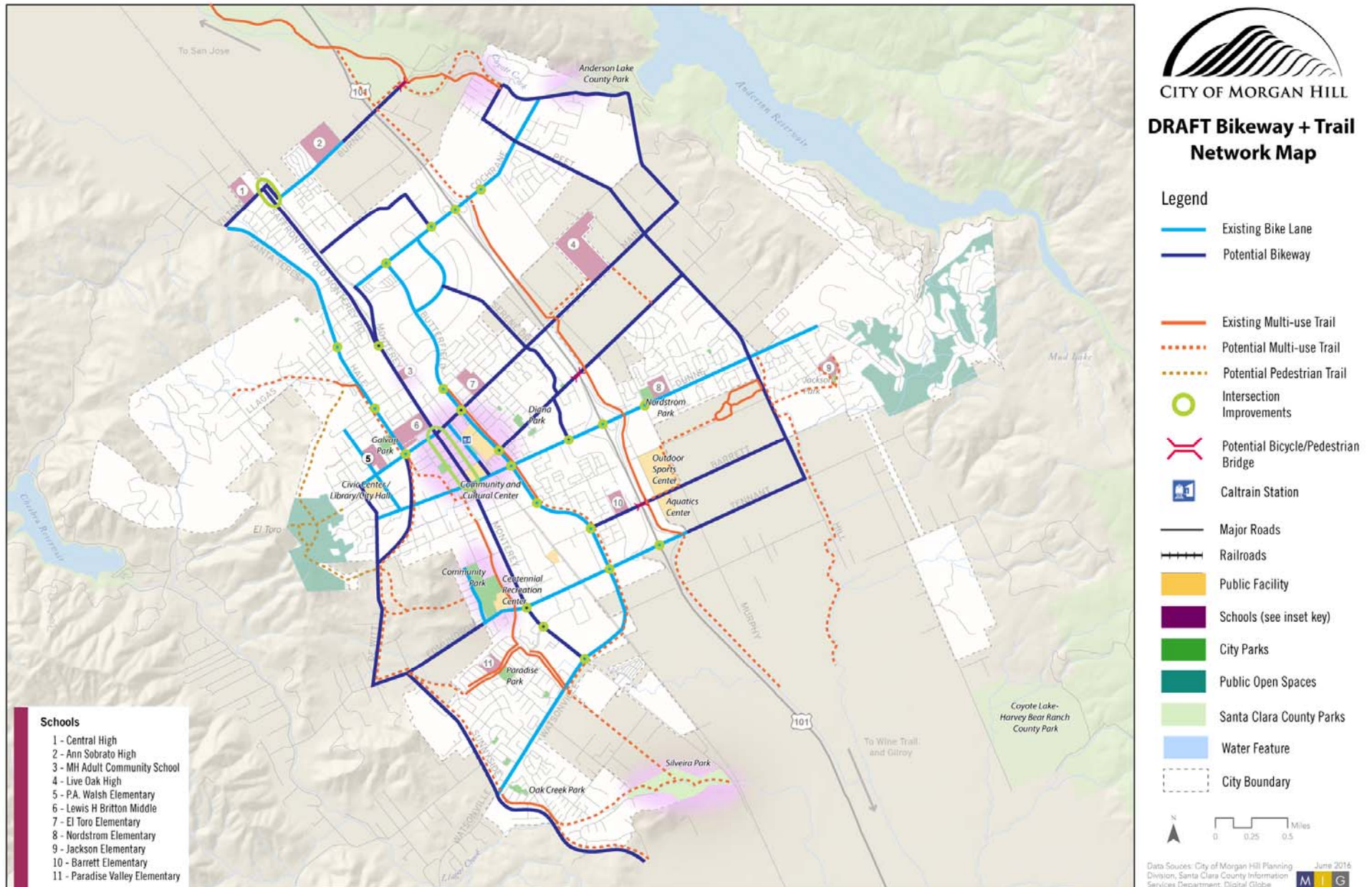


# Potential Trails





# Potential Bikeways & Trails



# Bicycle Advisory Group and PRC Input

- Prioritize bike boulevards (away from main arterials)
- Key connections:
  - Live Oak High School to Diana, Hill and Madrone Channel Trail
  - Coyote Creek to Downtown
  - Multi-use trails on Monterey and Hale
  - Ponds to Aquatic Center
  - Diana to County Courthouse





# Bikeways and Trails Priorities Discussion

- Do you agree with these priorities?
- Are there additional bikeways and trails we should be considering?





# Funding



# Existing and Potential Funding Sources

## Current Funding Sources

Park Impact Fee

Recreation Impact Fee

RDCS Open Space Funds

## Potential Future Funding Sources

Include bikeways in Traffic Impact Fee

Grants

Increase Transient Occupancy Tax (TOT) for regional sports facilities

# Development Impact Fees Projection 2015-2030

	Average Annual Revenue	Total Revenue (2015 - 2030)
Park Impact Fund Projected Revenues	\$1,515,831	\$21,221,632
Recreation Impact Fund Projected Revenues	\$952,029	\$13,328,401
<b>TOTAL</b>	<b>\$2,467,860</b>	<b>\$34,550,033</b>



A large crowd of people is gathered outdoors at night, sitting on lawn chairs and blankets on a grassy area. They are facing a modern building with a curved, orange-tinted roof. The building has several windows and a sign that reads "RAMADA". The scene is illuminated by warm lights, suggesting a concert or festival. The text "Prioritization and Project Discussion" is overlaid in the center of the image.

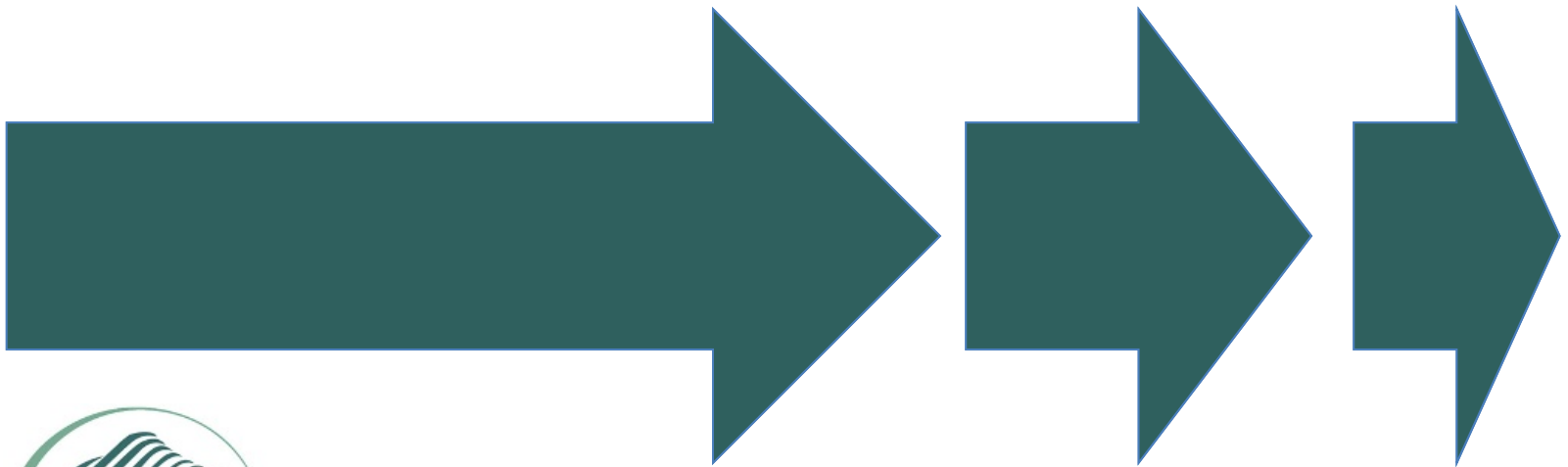
# Prioritization and Project Discussion

# Master Plan Development



# Next Steps

- Youth engagement (summer)
- Draft Plan (late summer/early fall )
  - Policies, projects and programs
  - Site concept plans
- Community review and adoption (fall/winter)





# Thank You

