

Santa Clara Valley

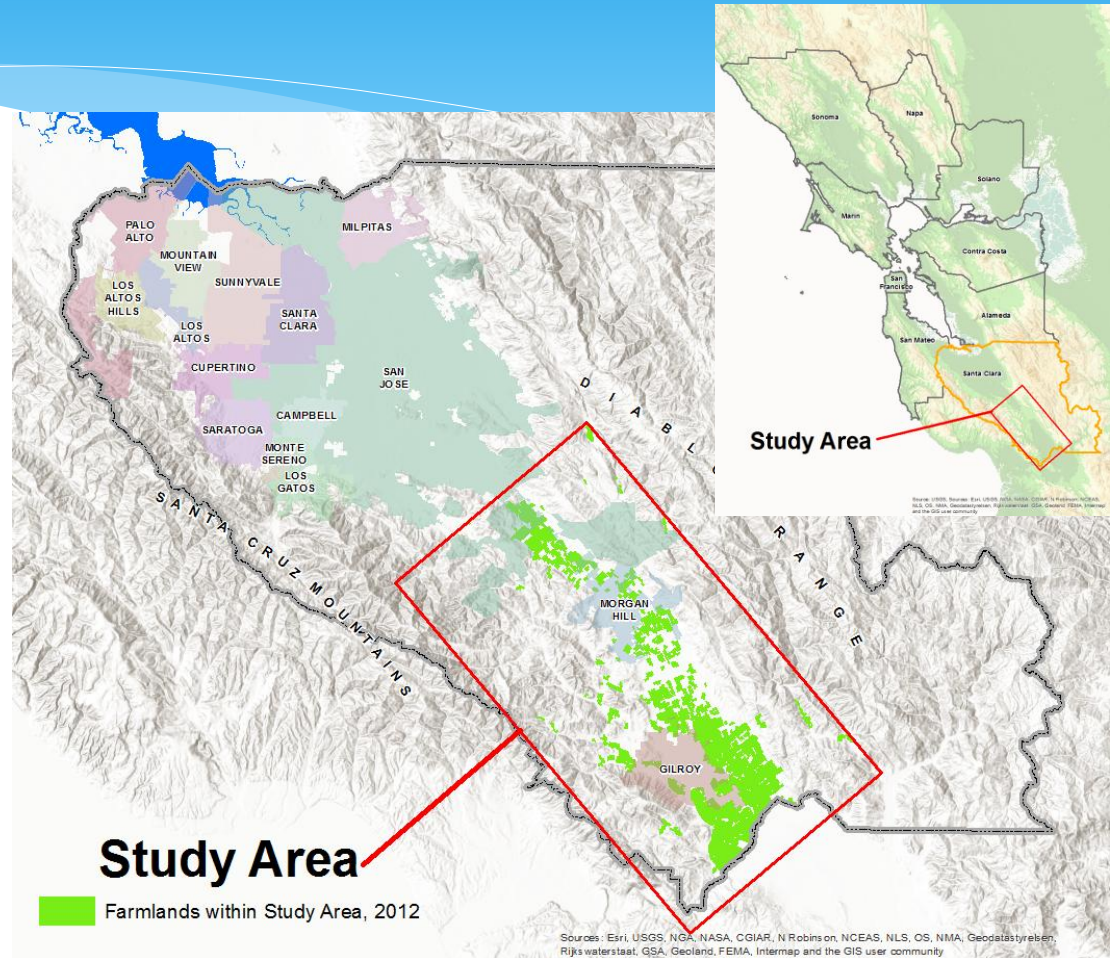
Climate and Agricultural Preservation Plan

City of Morgan Hill
August 20, 2016



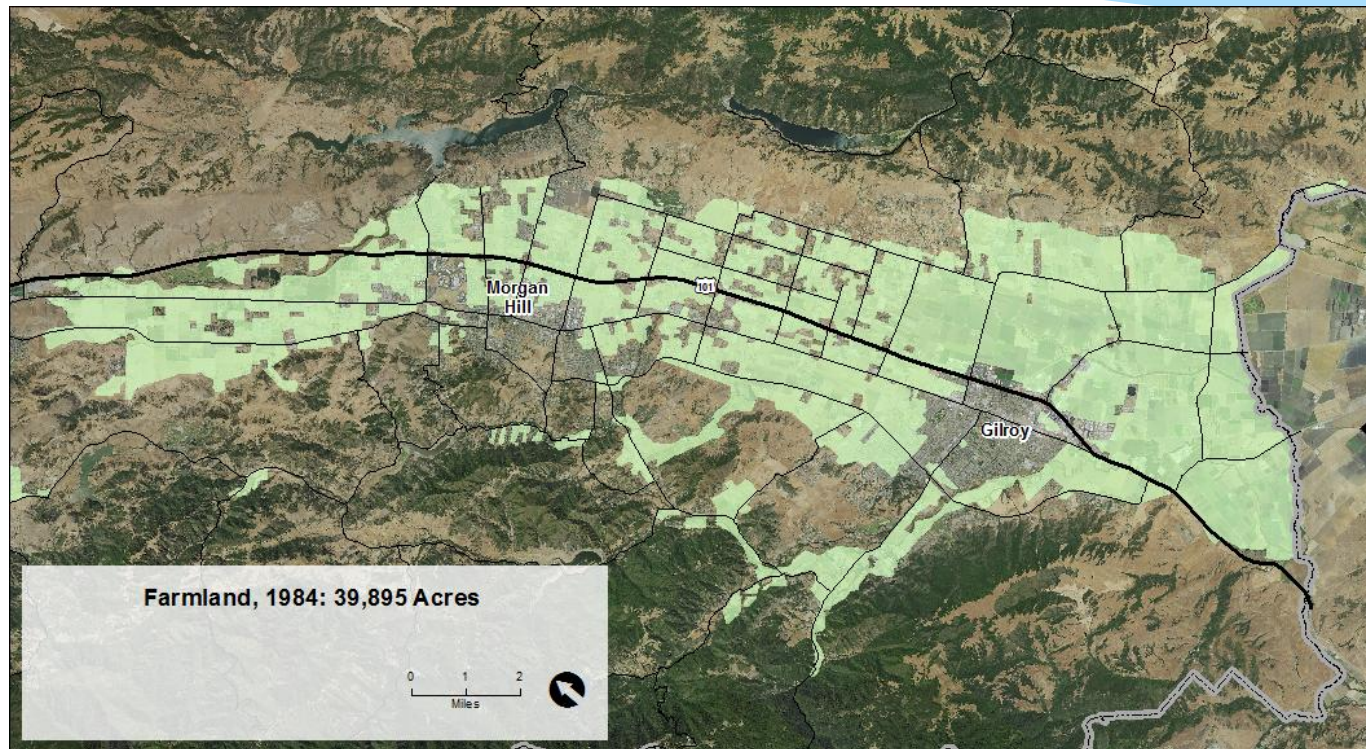
Santa Clara County & Agriculture

- * Santa Clara Valley
- * Santa Cruz Mountains, Diablo Mountain Range
- * 15 Cities in County.
 - * Cities adjacent to Valley Floor Agriculture – San Jose, Morgan Hill, Gilroy
- * 24,000 acres in agriculture

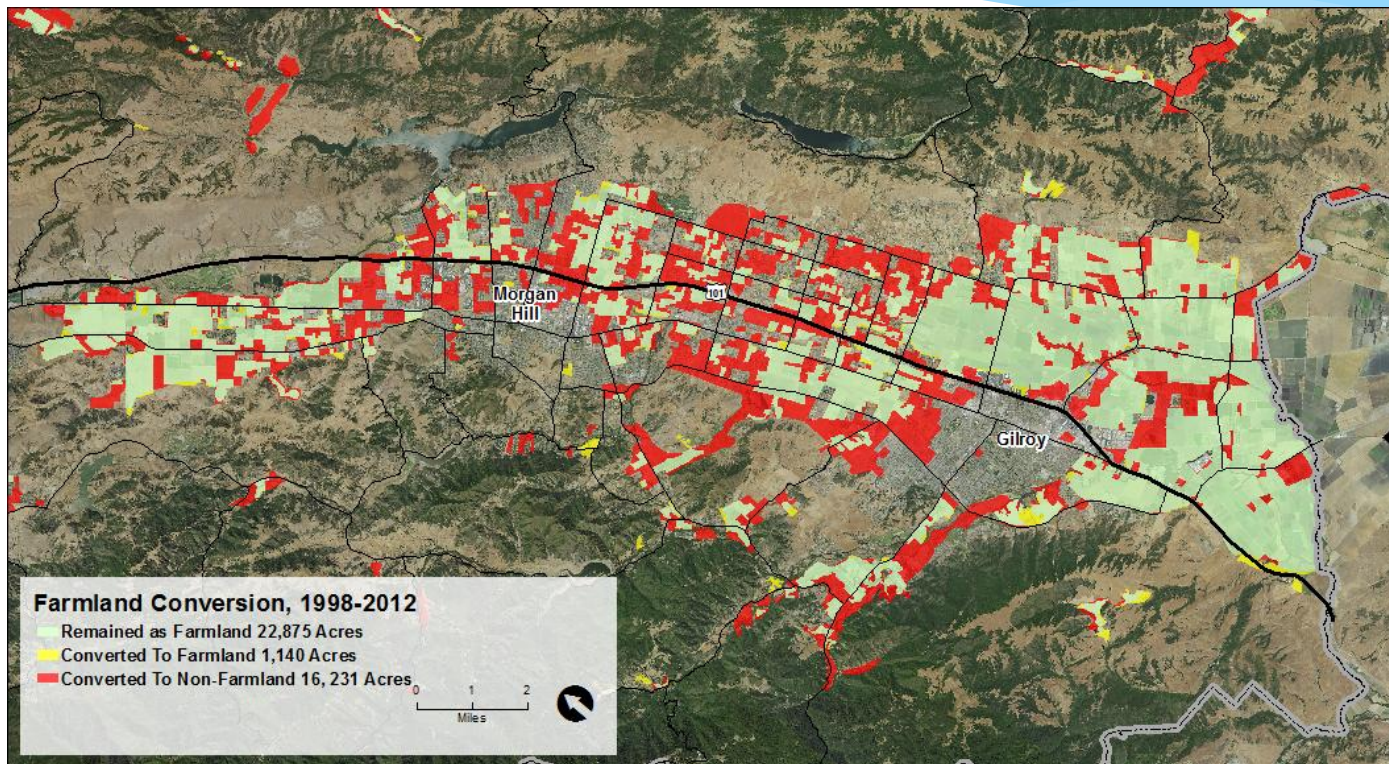


Ongoing Agricultural Land Conversion

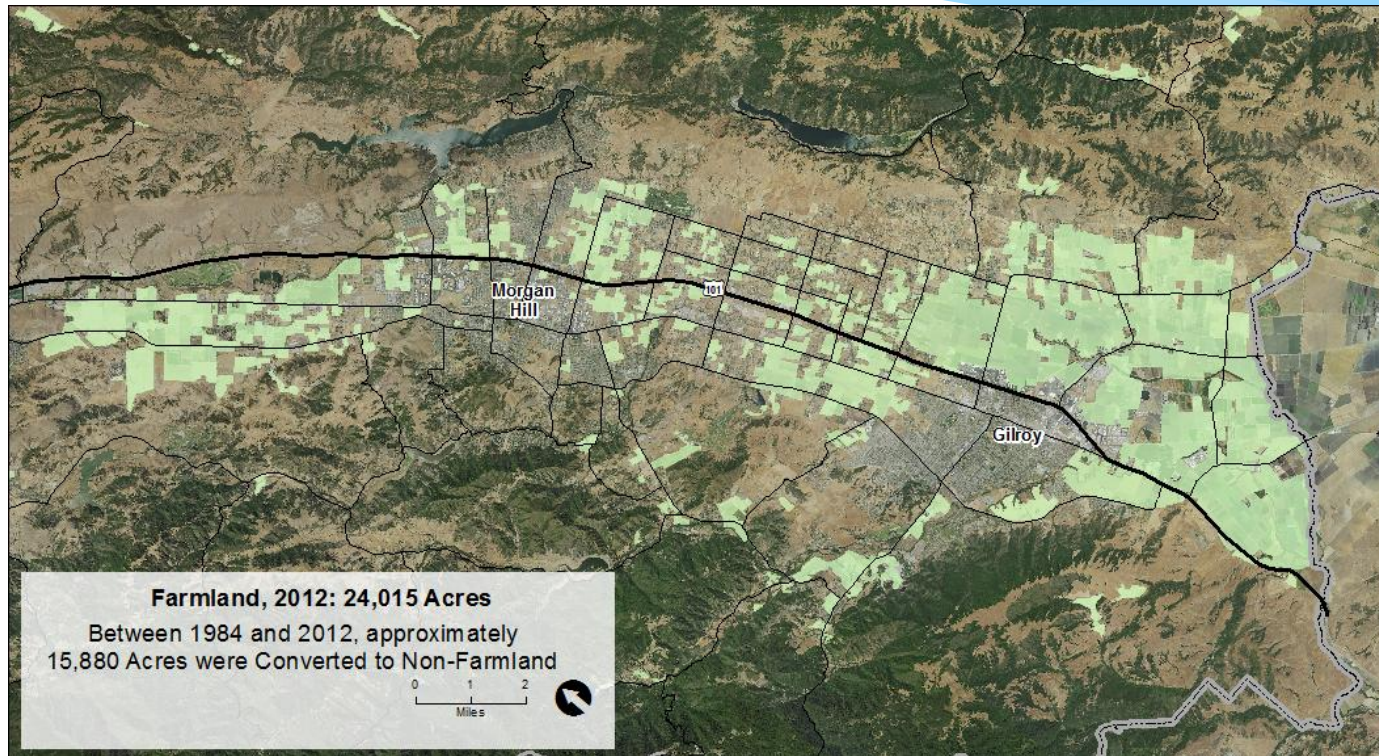
- * 1984-2012 – County lost approximately 16,000 acres of farmland



Ongoing Agricultural Land Conversion



Ongoing Agricultural Land Conversion

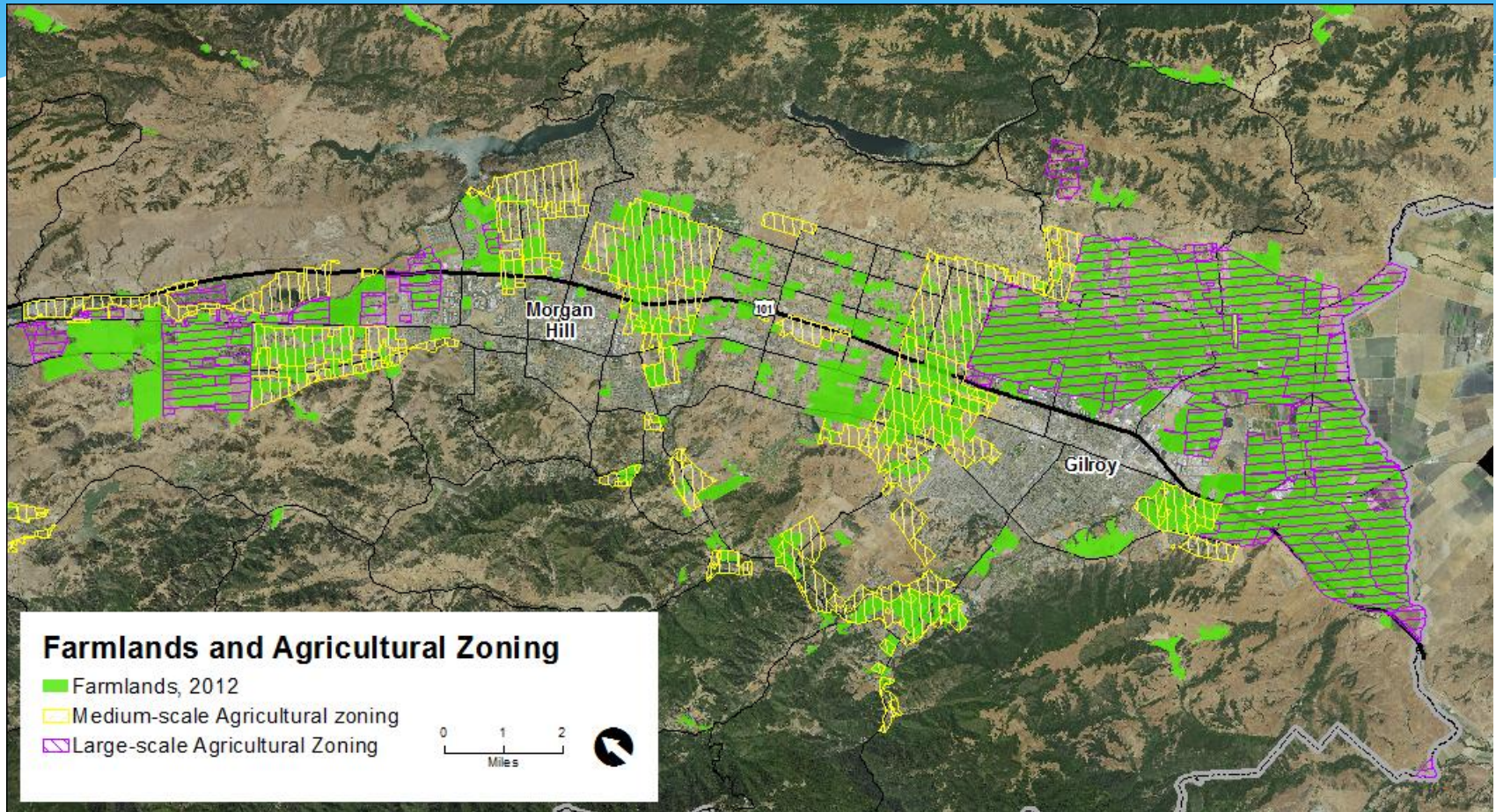


Santa Clara Valley Agriculture Today

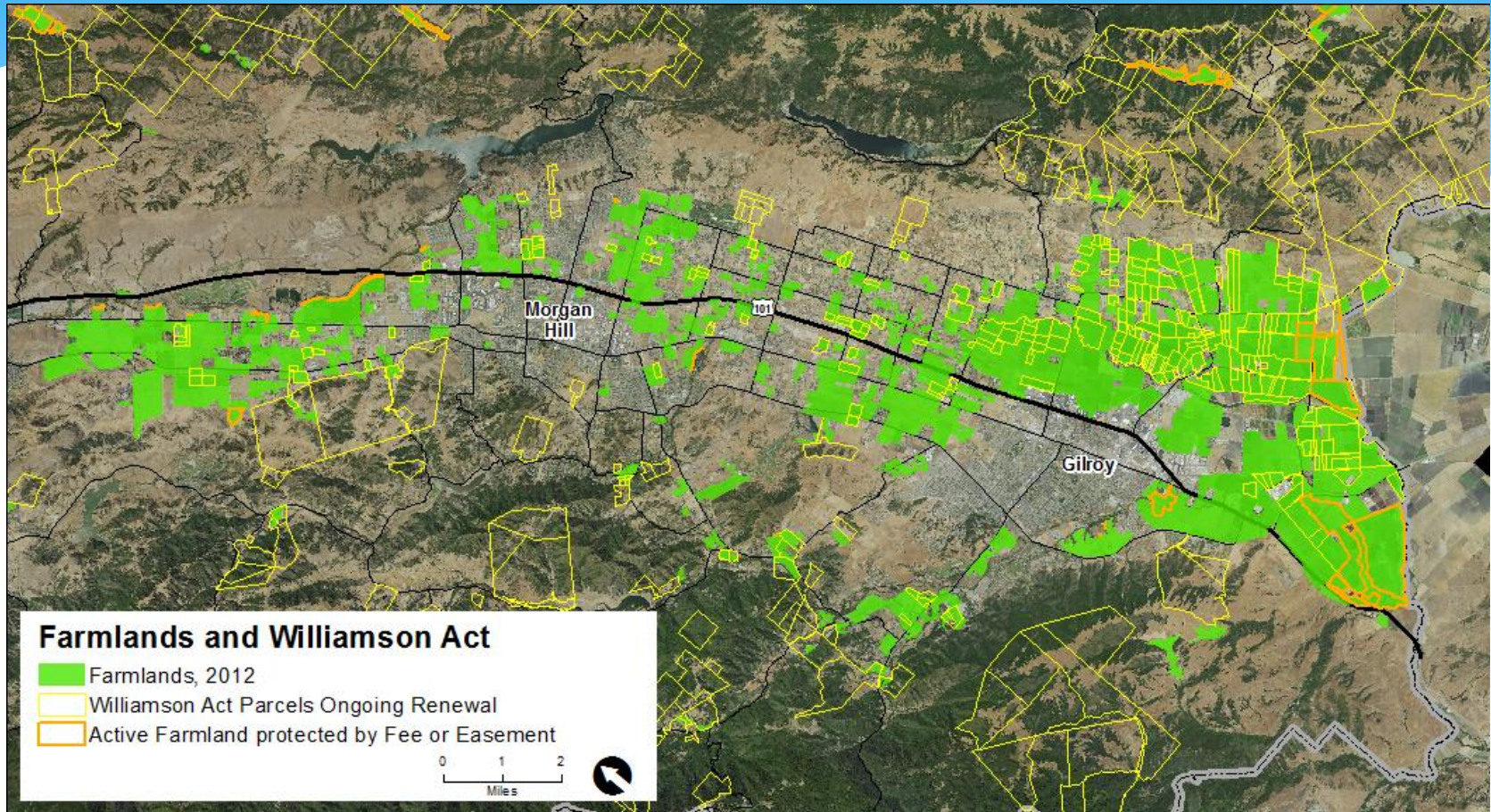
- * \$830 million annual contribution to SCC Economy
- * 8,100 workers
- * Over 1,000 farms
- * Provides food supply, open space, groundwater recharge, flood protection and Greenhouse Gas benefits



County Agricultural Preservation Tools



County Agricultural Preservation Tools



Past Studies & Programs

- * South County Agricultural Study (1996)
- * County Agricultural Conservation Easement Program (2001)
- * SAGE Coyote Valley Study (2012)
- * Santa Clara County Food System Assessment (2013)
- * Open Space Authority –Healthy Lands, Healthy Economies (2014) & Greenprint (2014)
- * Morgan Hill Agricultural Preservation Plan – Southeast Quadrant (2015)



Overview of CAPP

- * **Regional Approach to Agricultural Preservation in Santa Clara County**
 - * Program Partners – County & Open Space Authority
 - * Project Consultants – Cultivate, Ag Innovations
- * Partial Funding by **Sustainable Agricultural Land Conservation Grants**
 - * Department of Conservation, Strategic Growth Council
 - * Greenhouse Gas Reduction Fund
- * Builds off of past studies & current programs
- * Inter-jurisdictional



Focus of CAPP

- * **County Regulatory / Zoning Modifications**

- * Restrictions on Residential / Nonresidential development on Ag lands
- * Liberalize regulations for Agriculture and Ag Supportive Uses



Focus of CAPP

- * **Regional Agricultural Conservation Easement Program**
 - * High Priority Agricultural Lands in the South County
 - * Pooled Funding Sources
 - * DOC – SALC funding
 - * Local Funding
 - * Agricultural Conversion Mitigation Fees
 - * Transfer of Development Rights



Focus of CAPP

- * **Regional Mapping of Agricultural Lands in Santa Clara Valley**
- * **High Priority Agricultural Lands:**
 - * Agricultural Viability
 - * Threat of Land Conversion – (DOC Criteria)
 - * Greenhouse Gas Emissions from Conversion
- * **Identify Co-Benefits:**
 - * Food Security / Food shed
 - * Groundwater / Flooding
 - * Habitat Values



Expert & Stakeholder Engagement

- * **Advisors**

- * Advise on Approach to Program – Best Practices / Models
- * Land Use Tools, Agricultural Conservation Easements, Program Administration, Public Engagement
- * Peer review of work products

- * **Local Technical Working Groups**

- * Municipal and Farming / Food System Panels
- * Engagement throughout process – review and provide input on work products

- * **Municipal Outreach**

- * **Public Input**



Advisor Subgroups

Agricultural Easement Implementation

Facilitators - Open Space Authority

Chris Kelly (The Conservation Fund)
Darla Guenzler (CA Council of Land Trusts)
Jeff Stump (Marin Agricultural Land Trust)
John Lowrie (CA Department of Conservation)
Nancy Schaeffer (CA Rangeland Trust)
Tom Scharffenberger (Conservation Consultant)
Craige Edgerton (Silicon Valley Land Conservancy)
Kathryn Lyddan (Brentwood Agricultural Land Trust)

Land Use Planning and Policy

Facilitators – Santa Clara County Planning

Bill Keene (Sonoma County Ag. & Open Space District)
Don Weden (Retired Santa Clara County Planner)
Eli Zigas (SPUR - Agriculture and Food Systems)
Brian Schmidt (Greenbelt Alliance)
Pete Parkinson (Former Sonoma County Planning Director)
Jeanne Merrill (CA Climate & Agriculture Network)
Neelima Palacherla (Santa Clara County LAFCO)
David Morrison (Napa County Planning Director/Former Yolo County Planning Director)

Farming Economics and Vitality

Facilitators –County Agricultural Commissioner

Dave Runsten – Community Alliance with Family Farmers
Ed Thompson – American Farmland Trust
Serena Unger – American Farmland Trust
Jim Leap – AgroEcology Program Director/Farmer
Reggie Knox/ Mika Maekawa - FarmLink
Justin Fields - Rancher
Sibella Kraus - SAGE
Stephen Hohenrieder (Private Capital Investor – Food Systems)
Stephanie Moreno (Guadalupe-Coyote RCD)
Kevin O'Day (Rancher/Former County Ag. Commissioner)
David Shabazian (Sacramento Area Council of Govts)
Duncan MacEwan (Agricultural Economics Consultant)
Marianna Leuschel (Ag. Marketing/Branding Consultant)



Technical Panels

Farming and Food Sector

John Telfer (Morgan Hill Farmland Realtor)
Pete Aiello (Usegi Farms)
Bill Chiala (Chiala Farms)
Sam & Nick Thorpe (Spade and Plow Farms)
Greg Leonard (Food Systems Alliance) / Julie Hutcheson (Food Systems Alliance)
Erin Gill / Janet Burback (Santa Clara County Farm Bureau)
Sheila Barry / Aparna Gazula (UC Cooperative Extension)

Municipal

Anthony Eulo (City of Morgan Hill)
Jared Hart (City of San Jose)
K. Abrams / Rebecca Tolentino (City of Gilroy)
Brian Mendenhall (Santa Clara Valley Water District)
Kirk Girard / Rob Eastwood (Santa Clara County)



CAPP Phases

- * **Phase 1** Mapping – *January 2016*
- * **Phase 2** Draft Program – *May 2017*
- * **Phase 3** Final Program – *September 2017*



Thank You!!



Kirk Girard, Director, Planning and Development – kirk.girard@pln.sccgov.org



Andrea Mackenzie, General Manager - amackenzie@openspaceauthority.org

More information -

<https://www.sccgov.org/sites/dpd/PlansOrdinances/Studies/Pages/SustainableAgLands.aspx>