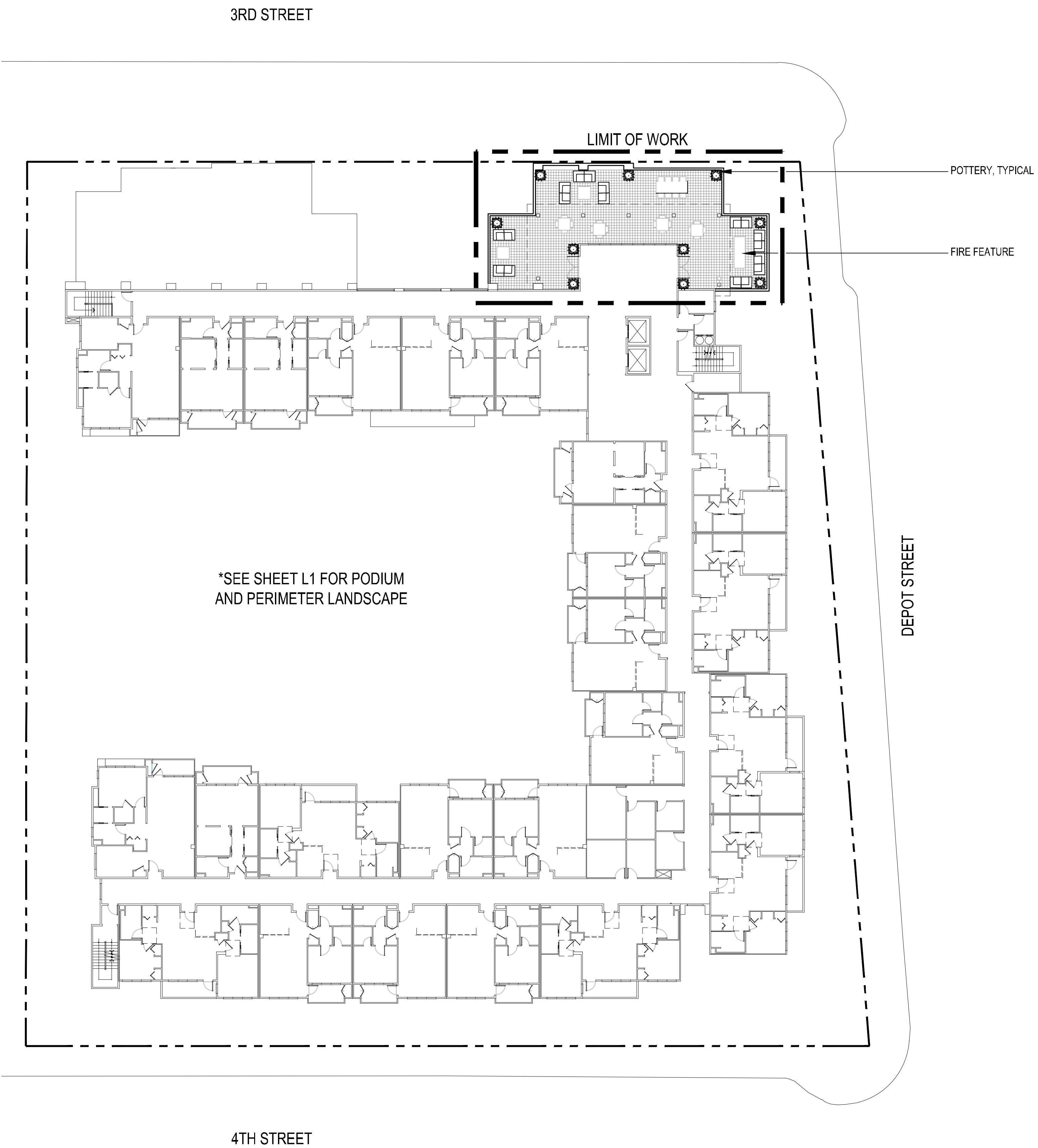
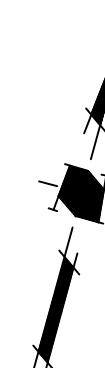


PLANTING LEGEND

SYMBOL	BOTANICAL NAME
TREES	
	ACER RUBRUM 'ARMSTRONG'
	CERCIDIUM X 'DESERT MUSEUM'
	CITRUS X SINENSIS
	OLEA EUROPAEA
	PODOCARPUS ELONGATUS 'MONMAL'
	QUERCUS ROBUR 'FASTIGIATA'
	CITY APPROVED STREET TREE
LARGE SHRUBS (BACKGROUND PLANTING)	
	LEUCADENDRON SALIGNUM 'BLUSH'
	PHLOMIS FRUTICOSA
MEDIUM SHRUBS	
	AGAVE 'BLUE FLAME'
	AGAVE 'BLUE GLOW'
	CALAMAGROSTIS 'KARL FOERSTER'
	CHONDROPETALUM TECTORUM
	TRICHOSTEMA LANATUM
	VERBENA BONARIENSIS
SMALL SHRUBS	
	DIANELLA LITTLE JESS™
	LIBERTIA PEREGRINANS
	LOMANDRA BREEZE
	NEPETA RACEMOSA 'WALKER'S LOW'
	SESLERIA AUTUMNALIS
GROUNDCOVERS	
	SEDUM RUPESTRE 'ANGELINA'
	SENECIO MANDRALISCAE
BIO TREATMENT AREA PLANTING	
	JUNCUS PATENS 'ELKS BLUE'
	LOMANDRA BREEZE
POTTERY	
	AGAVE 'BLUE GLOW'
	ECHEVERIA DERENBERGII
	SENECIO MANDRALISCAE
	SESLERIA AUTUMNALIS

NOTES:
1. SEE SHEET L3 FOR PLANTING LEGEND AND NOTES.
2. SEE SHEET L4 FOR PLANTING DETAILS.
3. SEE SHEET L5 AND L6 FOR HYDROZONE PLAN.
4. SEE SHEET L7 FOR IRRIGATION DETAILS.

PODIUM AND PERIMETER LANDSCAPE CONCEPT
12.23.16



POTTERY



AGAVE 'BLUE GLOW'
ECHEVERIA DERENBERGII
SENECIO MANDRALISCAE
SESLERIA AUTUMNALIS

- NOTES:
1. SEE SHEET L3 FOR PLANTING LEGEND AND NOTES.
 2. SEE SHEET L4 FOR PLANTING DETAILS.
 3. SEE SHEET L5 AND L6 FOR HYDROZONE PLAN.
 4. SEE SHEET L7 FOR IRRIGATION DETAILS.

**ROOF DECK
LANDSCAPE
CONCEPT**

12.23.16

SYMBOL	BOTANICAL NAME	COMMON NAME	MINIMUM SIZE	HABIT/DESCRIPTION	WUCOLS
TREES					
	ACER RUBRUM 'ARMSTRONG'	COLUMNAR RED MAPLE	24" BOX	COLUMNAR GROWTH	M
	CERCIDIUM X 'DESERT MUSEUM'	PALO VERDE	36" BOX	GREEN BARK	L
	CITRUS X SINENSIS	CITRUS TREE	48" BOX	SMALL TO MEDIUM SIZE	M
	OLEA EUROPAEA	FIELD GROWN OLIVE	24" BOX	BLUE-GREEN FOLIAGE	M
	PODOCARPUS ELONGATUS 'MONMAL'	ICEE BLUE YELLOW-WOOD	24" BOX	BLUE FOLIAGE	M
	QUERCUS ROBUR 'FASTIGIATA'	COLUMNAR ENGLISH OAK	24" BOX	COLUMNAR GROWTH	M
	CITY APPROVED STREET TREE	TO BE SELECTED BY CITY ARBORIST	24" BOX		
LARGE SHRUBS (BACKGROUND PLANTING)					
	LEUCADENDRON SALIGNUM 'BLUSH'	WILLOW CONE BUSH	1 GALLON	RED FOLIAGE	L
	PHLOMIS FRUTICOSA	JERUSALEM SAGE	5 GALLON	YELLOW FLOWERS	L
MEDIUM SHRUBS					
	AGAVE 'BLUE FLAME'	BLUE FLAME AGAVE	5 GALLON	BLUE-GREEN FOLIAGE	L
	AGAVE 'BLUE GLOW'	BLUE GLOW AGAVE	5 GALLON	BLUE-GREEN FOLIAGE	L
	CALAMAGROSTIS 'KARL FOERSTER'	FEATHER REED GRASS	1 GALLON	GREEN FOLIAGE	L
	CHONDROPETALUM TECTORUM	SMALL CAPE RUSH	1 GALLON	GREEN FOLIAGE	L
	TRICHOSTEMA LANATUM	WOOLY BLUE CURLS	5 GALLON	FRAGRANT FOLIAGE	L
	VERBENA BONARIENSIS	TALL VERBENA	1 GALLON	PURPLE FLOWERS	L
SMALL SHRUBS					
	DIANELLA LITTLE JESS™	LITTLE JESS™ DIANELLA	1 GALLON	CLUMPING HABIT	L
	LIBERTIA PEREGRINANS	ORANGE LIBERTIA	1 GALLON	BRIGHT ORANGE FOLIAGE	L
	LOMANDRA BREEZE	DWARF MAT RUSH	1 GALLON	GREEN FOLIAGE	L
	NEPETA RACEMOSA 'WALKER'S LOW'	CATMINT	1 GALLON	PURPLE FLOWERS	L
	SESLERIA AUTUMNALIS	AUTUMN MOOR	1 GALLON	GREEN-YELLOW FOLIAGE	L
GROUNDCOVERS					
	SEDUM RUPESTRE 'ANGELINA'	ANGELINA STONECROP	1 GALLON	SEASONAL COLOR CHANGE	L
	SENECIO MANDRALISCAE	BLUE CHALKSTICKS	1 GALLON	BLUE-GREEN FOLIAGE	L
BIO TREATMENT AREA PLANTING					
	JUNCUS PATENS 'ELKS BLUE'	GRAY RUSH	1 GALLON	GRAY REED	L
	LOMANDRA BREEZE	DWARF MAT RUSH	1 GALLON	GREEN FOLIAGE	L
POTTERY					
	AGAVE 'BLUE GLOW'	BLUE GLOW AGAVE	5 GALLON	BLUE-GREEN FOLIAGE	L
	ECHEVERIA DERENBERGII	PAINTED LADY	1 GALLON	RED AND YELLOW FLOWERS	L
	SENECIO MANDRALISCAE	BLUE CHALKSTICKS	1 GALLON	BLUE-GREEN FOLIAGE	L
	SESLERIA AUTUMNALIS	AUTUMN MOOR	1 GALLON	GREEN-YELLOW FOLIAGE	L

NOTES:
1. BARK MULCH: ALL PLANTER AREAS TO RECEIVE A 3" THICK LAYER OF FIR BARK MULCH.
2. BIOTREATMENT CELLS TO HAVE 3" LAYER OF NON-FLOATING MULCH.

PLANTING NOTES

CONTRACTOR SHALL PROVIDE ALL LABOR, MATERIALS, AND EQUIPMENT NECESSARY TO FURNISH AND INSTALL PLANT MATERIAL AS SHOWN ON THE DRAWINGS AND AS DESCRIBED IN THE SPECIFICATIONS.

UNLESS DESIGNATED ON THE DRAWINGS OTHERWISE, STRUCTURAL IMPROVEMENTS AND HARDSCAPE SHALL BE INSTALLED PRIOR TO PLANTING OPERATIONS.

PLANT LIST ON THE DRAWINGS SHALL BE USED AS A GUIDE ONLY. CONTRACTOR SHALL TAKEOFF AND VERIFY SIZES AND QUANTITIES BY PLAN CHECK.

A SOIL MANAGEMENT REPORT SHALL BE PROVIDED BY LANDSCAPE CONTRACTOR AND SOIL AMENDMENTS SHALL BE FOLLOWED PER THE REPORT. PHYSICAL COPIES OF THE SOIL MANAGEMENT REPORT SHALL BE PROVIDED TO THE CLIENT, PROJECT LANDSCAPE ARCHITECT AND LOCAL AGENCY AS REQUIRED. THE SOIL MANAGEMENT REPORT SHALL CONFORM TO STATE AB1881 WATER EFFICIENT LANDSCAPE ORDINANCE (WELO) OR LOCAL AGENCY ADOPTED WELO. CONTRACTOR SHALL OBTAIN A SOILS MANAGEMENT REPORT AFTER GRADING OPERATIONS AND PRIOR TO PLANT INSTALLATION.

SAMPLES OF FERTILIZERS, ORGANIC AMENDMENT, SOIL CONDITIONERS, AND SEED SHALL BE SUBMITTED PRIOR TO INCORPORATION. CONTRACTOR SHALL FURNISH TO THE OWNER'S AUTHORIZED REPRESENTATIVE A CERTIFICATE OF COMPLIANCE FOR SUCH FURNISHED MATERIALS.

ALL WORK ON THE IRRIGATION SYSTEM, INCLUDING HYDROSTATIC, COVERAGE, AND OPERATIONAL TESTS AND THE BACKFILLING AND COMPACTION OF TRENCHES SHALL BE PERFORMED PRIOR TO PLANTING OPERATIONS.

LOCATIONS OF PLANT MATERIAL SHALL BE REVIEWED ON SITE BY THE OWNER'S AUTHORIZED REPRESENTATIVE PRIOR TO INSTALLATION.

TREES SHALL BE PLANTED NO CLOSER THAN TEN FEET (10') FROM UTILITIES.

TREES PLANTED WITHIN FIVE FEET (5') OF HARDSCAPE OR STRUCTURES SHALL BE INSTALLED WITH A ROOT BARRIER AS APPROVED BY THE OWNER'S AUTHORIZED REPRESENTATIVE.

ALL PLANTING AREAS TO RECEIVE 3" THICK BARK MULCH LAYER. IN THE EVENT THAT BARK MULCH EXISTS ON SITE, CONTRACTOR SHALL PROVIDE SAMPLE OF EXISTING AND PROPOSED MATCHING BARK MULCH FOR APPROVAL. OTHERWISE, BARK MULCH SHALL BE LYNOSO SMALL FIR BARK (3/4" TO 1-1/2") OR APPROVED EQUAL.

ALL PLANT MATERIAL SHALL BE SELECTED IN ACCORDANCE WITH THE AMERICAN STANDARD FOR NURSERY STOCK (ANSI Z60.1)
FOR STANDARD FORM TREES, CALIPER SIZE SHALL BE MEASURED 6" ABOVE THE SOIL LINE FOR CALIPERS EQUAL TO OR LESS THAN 4" FOR CALIPERS GREATER THAN 4", CALIPER SHALL BE MEASURES 12" ABOVE THE SOIL LINE. FOR MULTI-TRUNK TREES THE CALIPER SHALL BE ESTABLISHED BY TAKING THE AVERAGE OF THE CALIPER OF THE TWO LARGEST TRUNKS.
CALIPER IS MEASURED 6" ABOVE ORIGINATION POINT OF THE SECOND LARGEST TRUNK OR 6" ABOVE GROUND IF ALL TRUNKS ORIGINATE FROM THE SOIL.

CALIPER SIZES STANDARDS:
15 GALLON: 0.75-1.25"
24" BOX: 1.25-2"
36" BOX: 2-3.5"
48" BOX: 3.5-5"
60" BOX: 4-6"

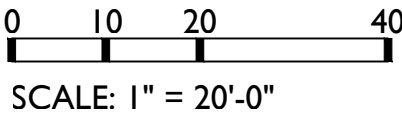
WATER NEEDS CATEGORY BASED ON WUCOLS IV (JANUARY 2014) LANDSCAPE COEFFICIENT METHOD:

CATEGORY	PERCENTAGE OF ETo
(H) HIGH:	0.7-0.9
(M) MEDIUM:	0.4-0.6
(L) LOW:	0.1-0.3
(VL) VERY LOW:	<0.1

PLANTING LEGEND
AND NOTES

SUNSWEEET MIXED USE

Morgan Hill, California

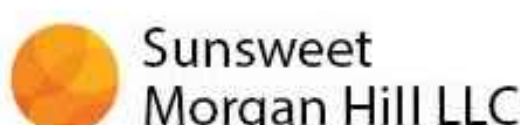


L3

12.23.16

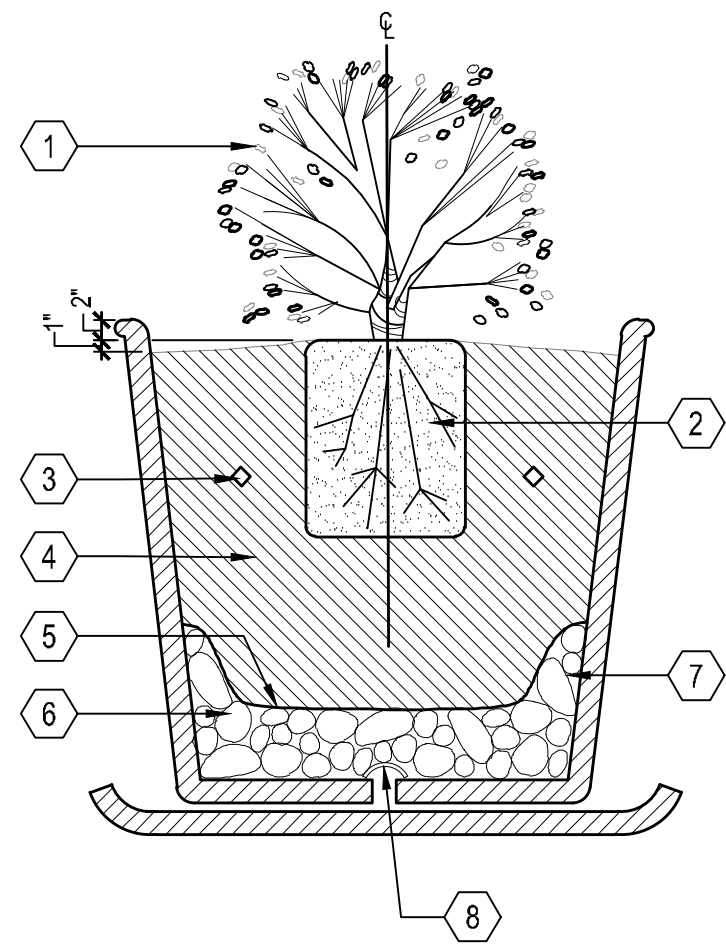


MH engineering Co.
16075 Vineyard Blvd., Morgan Hill, CA 95037



Copyright 2016 Bassenian | Lagoni Architects

NOTES:
1. SEE PLANTING SPECIFICATIONS PRIOR TO INSTALLATION OF PLANT MATERIALS.

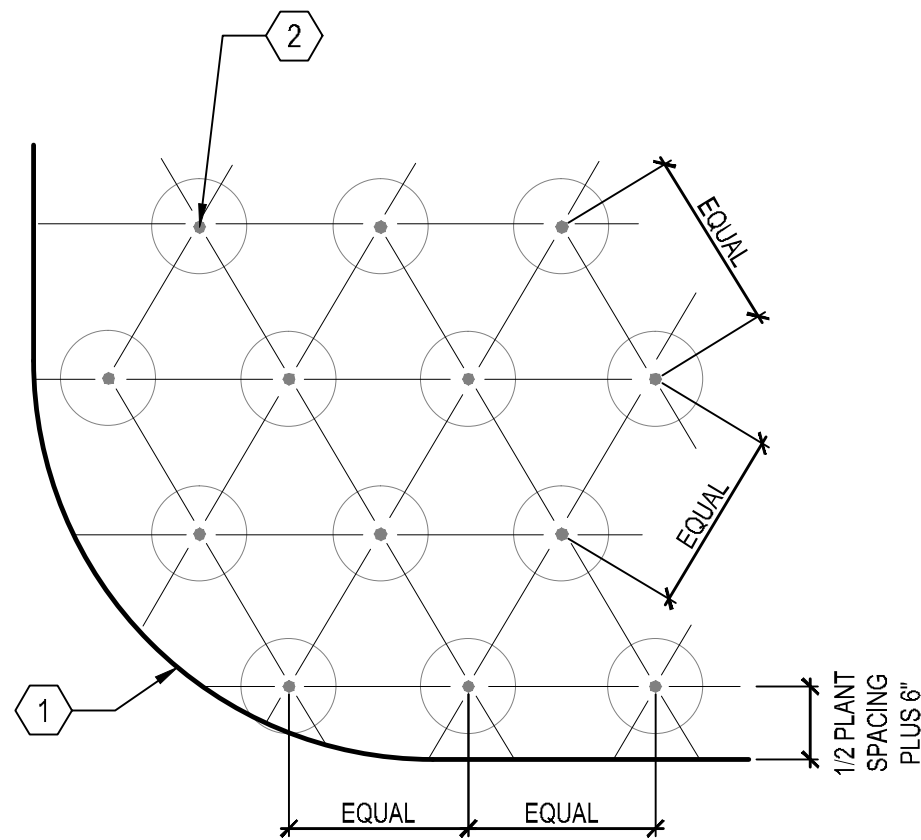


- 1 SHRUB-SEE PLAN AND LEGEND FOR SIZE AND TYPE
- 2 ROOTBALL
- 3 AGRIFORM PLANT TABLETS 2 PER 1 GALLON, 3 PER 5 AND 15 GALLON
- 4 BACKFILL MIX:
50% ORGANIC AMENDMENTS
50% WASHED HORTICULTURAL SAND
- 5 SARAN CLOTH 92% SHADE
- 6 PEA GRAVEL 2" MINIMUM DEPTH
- 7 POTTERY WITH MATCHING SAUCER-SEE POTTERY PLAN FOR TYPE
- 8 DRAIN CHIP

D CONTAINER PLANTING (SHRUB)

SCALE: N.T.S.

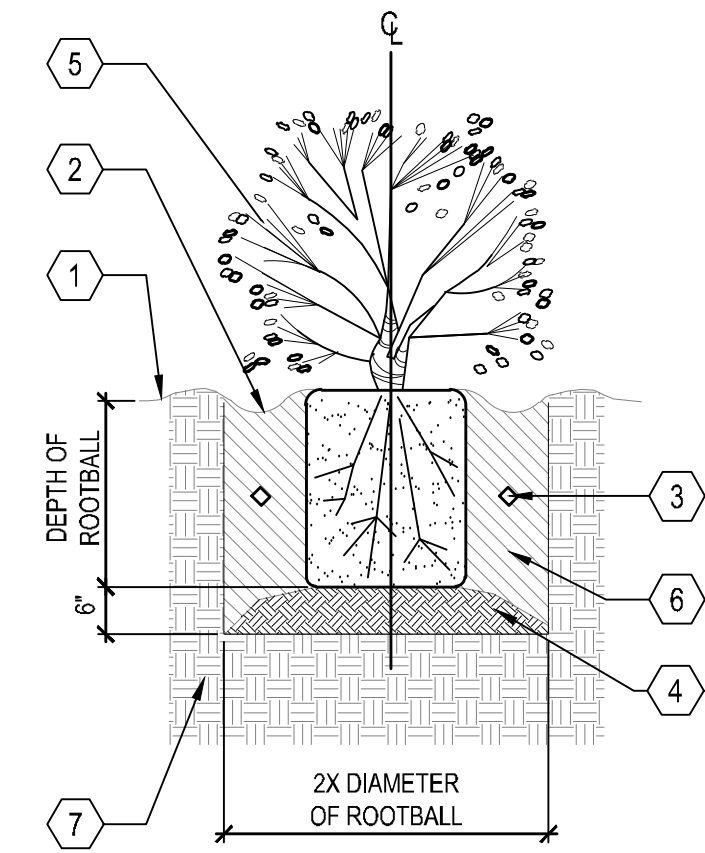
NOTES:
1. ALL PLANTS TO BE PLANTED AT EQUAL SPACING "TRIANGULATED" UNLESS OTHERWISE INDICATED ON PLANS.
2. INFILL PLANTS AS REQUIRED TO MAINTAIN SPACING AT IRREGULAR EDGES.



E GROUNDCOVER SPACING

SCALE: N.T.S.

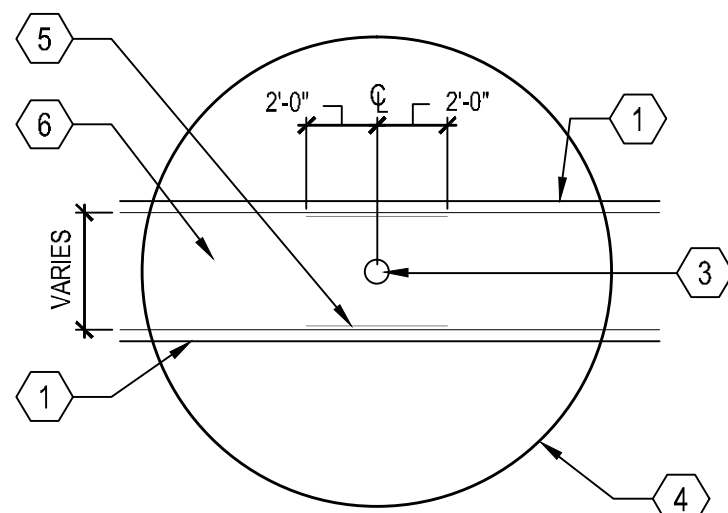
NOTES:
1. SEE PLANTING SPECIFICATIONS PRIOR TO INSTALLATION OF PLANT MATERIALS.
2. ROOTBALL CROWN TO BE 1" ABOVE FINISH GRADE.



B SHRUB PLANTING

SCALE: N.T.S.

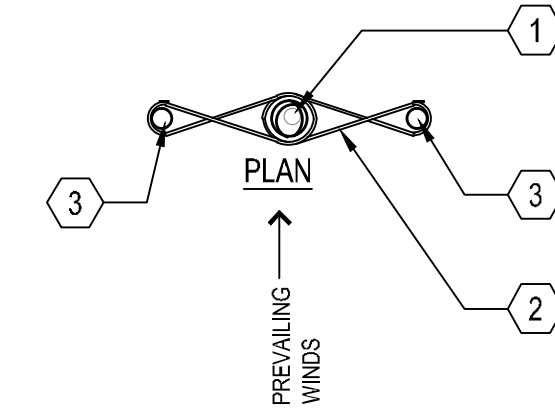
NOTES:
1. ROOT CONTROL BARRIER SHALL BE USED WHEN TREE IS LOCATED 10' OR LESS FROM WATER, STORM, AND SEWER UTILITIES.
2. INSTALL AN 18" DEEP 'DEEP ROOT' CONTROL BARRIER AT EDGE OF SIDEWALK.
3. INSTALL A 24" DEEP 'DEEP ROOT' CONTROL BARRIER AT BACK OF CURB OR INSTALL A 36" DEEP 'DEEP ROOT' CONTROL BARRIER AT BACK OF CURB WHEN WITHIN 6' FROM WATER AND SEWER LATERAL LINES.
4. NO ROOT CONTROL BARRIERS SHALL BE WITHIN 5' FROM WATER AND SEWER LINES.
*DEEP ROOT PHONE NUMBER (800)458-7668



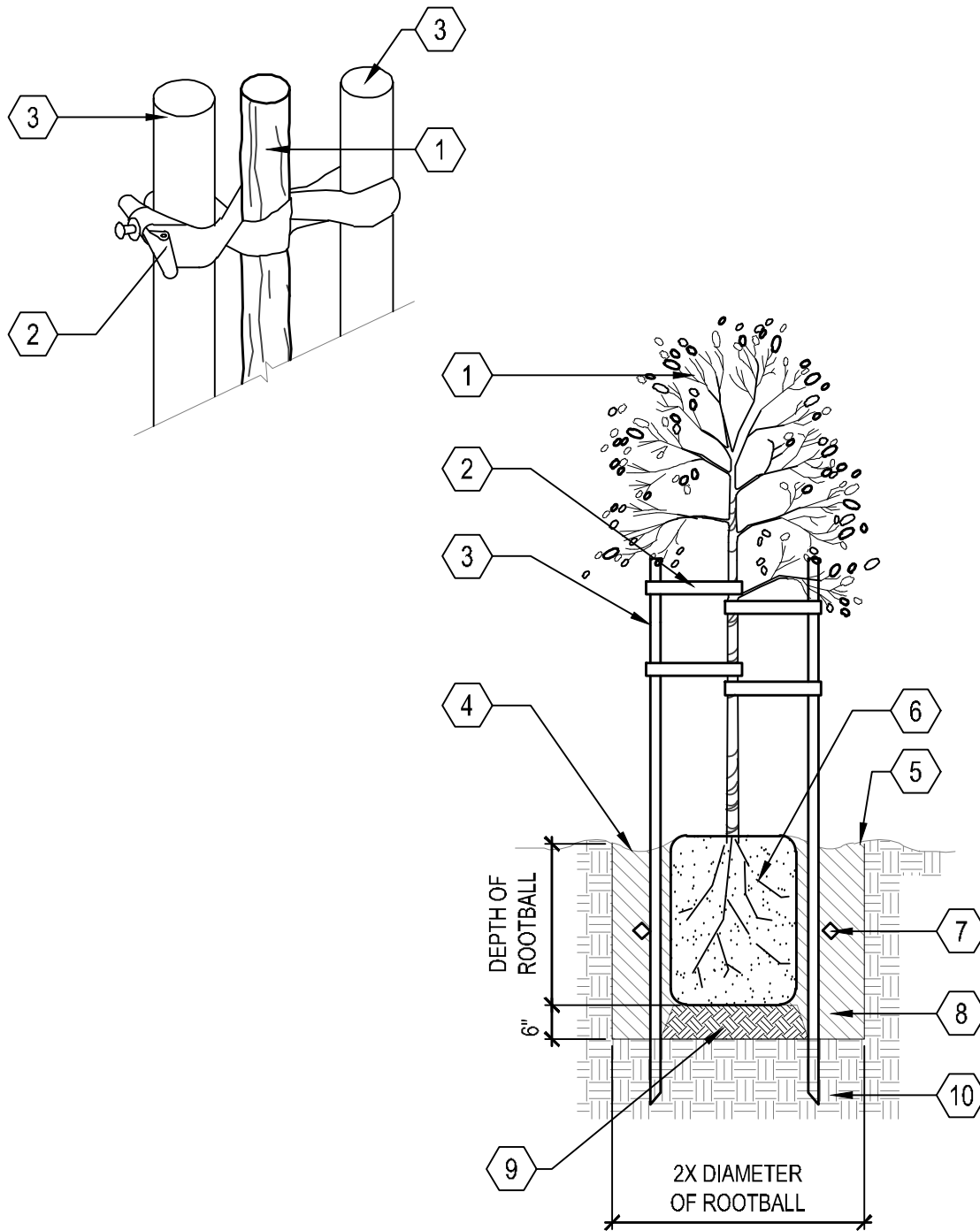
C ROOT BARRIER

SCALE: N.T.S.

NOTES:
1. SEE PLANTING SPECIFICATIONS PRIOR TO INSTALLATION OF PLANT MATERIALS.
2. THIS DETAIL APPLIES TO 15 GALLON AND 24" BOX TREES.
3. ROOTBALL CROWN TO EXTEND 1" ABOVE FINISH GRADE.
4. TREES INSTALLED WITHIN TURF AREAS SHALL BE INSTALLED WITH 'ARBOR-GARD' AT BASE OF TRUNK.



- 1 TREE-SEE PLAN FOR SIZE AND TYPE
- 2 CINCH TIE OR APPROVED EQUAL
- 3 2" DIAMETER TREATED LODGE POLE PINE STAKE PLACED ON WINDWARD SIDES OF TREE, AND OUTSIDE OF ROOTBALL
- 4 A SHALLOW BASIN 2" DEEP SHALL BE FORMED AROUND ROOTBALL BELOW FINISH GRADE. TREES PLANTED IN TURF SHALL NOT HAVE BASINS.
- 5 FINISH GRADE
- 6 ROOTBALL
- 7 AGRIFORM PLANT TABLETS 3 PER 15 GALLON, 6 PER 24" BOX AND 8 FOR 36" BOX
- 8 APPROVED BACKFILL, THOROUGHLY MIXED PRIOR TO INSTALLATION. PUDDLE AND SETTLE PRIOR TO PLANTING TREE.
- 9 FOOT TAMP BASE
- 10 NATIVE GRADE



A TREE STAKING (DOUBLE)

SCALE: N.T.S.

PLANTING DETAILS

SUNSWEEET MIXED USE

Morgan Hill, California

0 10 20 40
SCALE: 1" = 20'-0"

L4

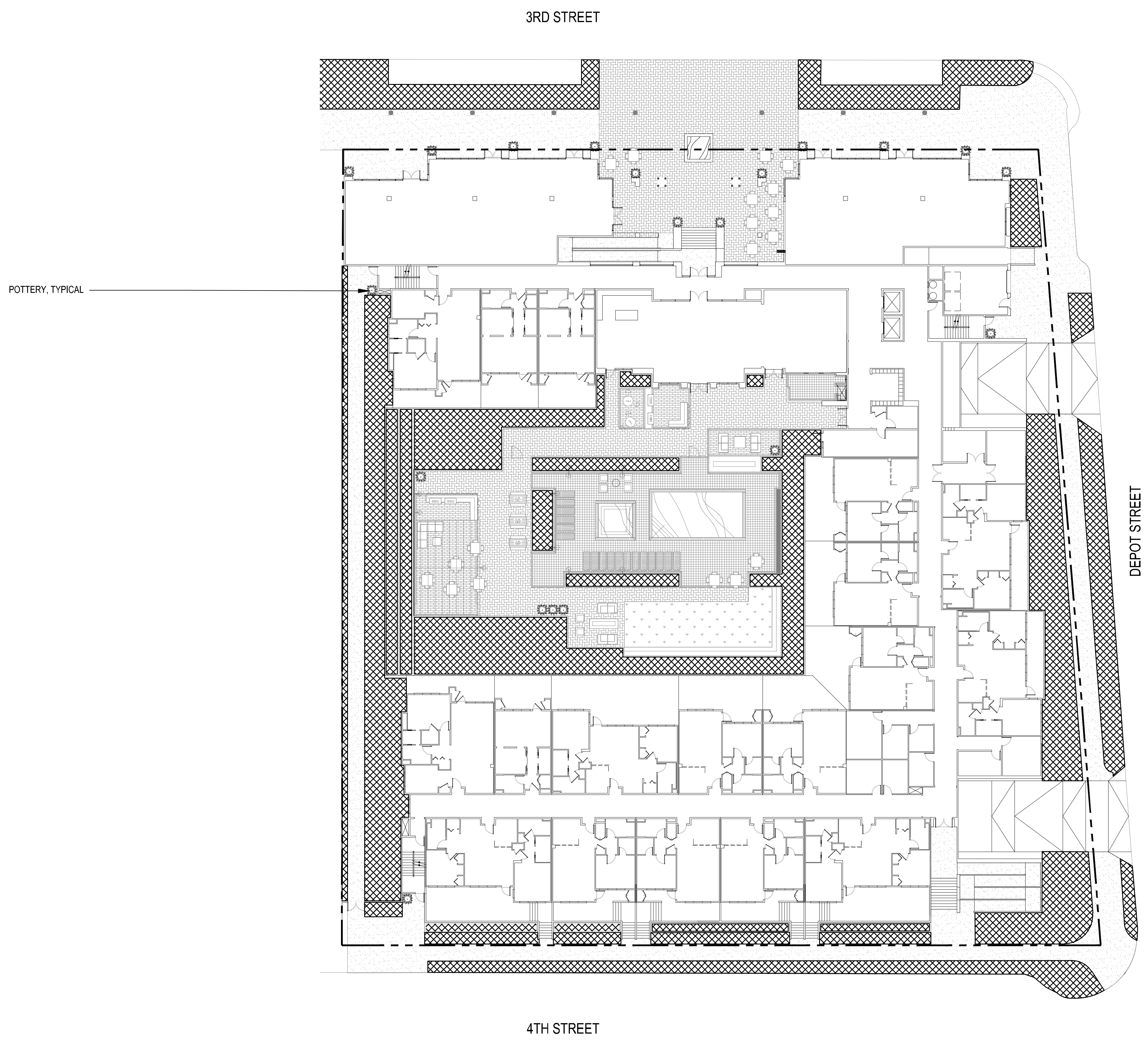
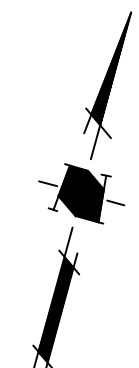
12.23.16

MH engineering Co.
16075 Vineyard Blvd., Morgan Hill, CA 95037

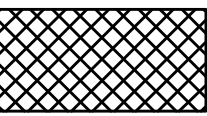
HMM
LANDSCAPE ARCHITECTURE

Sunsweet
Morgan Hill LLC

Bassenian | Lagoni
ARCHITECTURE • PLANNING • INTERIORS
Copyright 2016 Bassenian | Lagoni Architects



HYDROZONE LEGEND:

 DRIP IRRIGATION FOR AT GRADE, RAISED PLANTERS, AND POTTERY

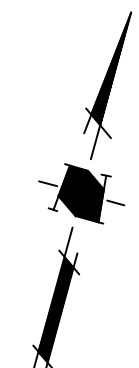
1. FINAL DESIGN SHALL CONFORM TO AB1881 OR CITY ADOPTED WATER EFFICIENT LANDSCAPE ORDINANCE.
2. ALL PLANTING AREAS SHOWN WILL BE COMMONLY MAINTAINED BY THE OWNER AND IRRIGATED BY AN AUTOMATIC IRRIGATION SYSTEM.
3. IRRIGATION SYSTEMS WILL BE PERMANENT BELOW GROUND AUTOMATED SYSTEMS ADEQUATE FOR THE ESTABLISHMENT AND MAINTENANCE OF ALL PLANT MATERIAL. THESE SYSTEMS WILL BE INSTALLED AS SOON AS PRACTICAL AFTER GRADING AND PRIOR TO PLANT MATERIAL INSTALLATION AND HYDROSEEDING.
4. ALL TURF, TREE, SHRUB AND GROUND COVER AREAS WILL BE IRRIGATED BY A PERMANENT, AUTOMATIC, UNDERGROUND IRRIGATION SYSTEM. ALL AREAS WILL BE IRRIGATED BY LOW AND MATCHED PRECIPITATION RATE POP-UP SPRAY HEADS. TURF, TREE, SHRUB, AND GROUND COVER AREAS SHALL BE ON SEPARATE VALVES ACCORDING TO PLANT WATER REQUIREMENTS AND EXPOSURE.
5. ALL IRRIGATION SYSTEMS SHALL BE DESIGNED, MAINTAINED AND MANAGED TO MEET OR EXCEED MINIMUM EFFICIENCY.
6. ALL IRRIGATION EQUIPMENT SHALL BE SCREENED APPROPRIATELY FROM VIEW IN PUBLIC AREAS TO THE MAXIMUM EXTENT POSSIBLE.
7. THE FINAL IRRIGATION PLAN SHALL ACCURATELY AND CLEARLY IDENTIFY:
 - A. LOCATIONS AND SIZES OF WATER POINTS OF CONNECTION.
 - B. LOCATION, TYPE AND SIZE OF ALL COMPONENTS OF THE IRRIGATION SYSTEM, INCLUDING AUTOMATIC CONTROLLERS, MAIN AND LATERAL LINES, VALVES, SPRINKLER HEADS, RAIN SWITCHES, AND QUICK COUPLERS.
 - C. STATIC WATER PRESSURE AT THE POINTS OF CONNECTION.
 - D. FLOW RATE (GALLONS PER MINUTE), REMOTE CONTROL VALVE SIZE, AND DESIGN OPERATING PRESSURE (PSI) FOR EACH STATION.
 - E. HYDROZONE INFORMATION TABLE.
 - F. WATER USE CALCULATIONS.
8. IRRIGATION POINT OF CONNECTION SHALL BE PROVIDED BY PROJECT MEP DESIGNER AND CONNECTED TO BUILDING DOMESTIC SERVICE PER DIRECTION OF PROJECT CIVIL ENGINEER.
9. THIS PROJECT SHALL BE RETROFITTED FOR FUTURE SOUTH BAY WATER RECYCLING PROGRAM CONNECTION. THE IRRIGATION PLAN SHALL BE DESIGNED FOR POTABLE WATER, BUT WITH THE USE OF PURPLE PIPE.

NOTES:

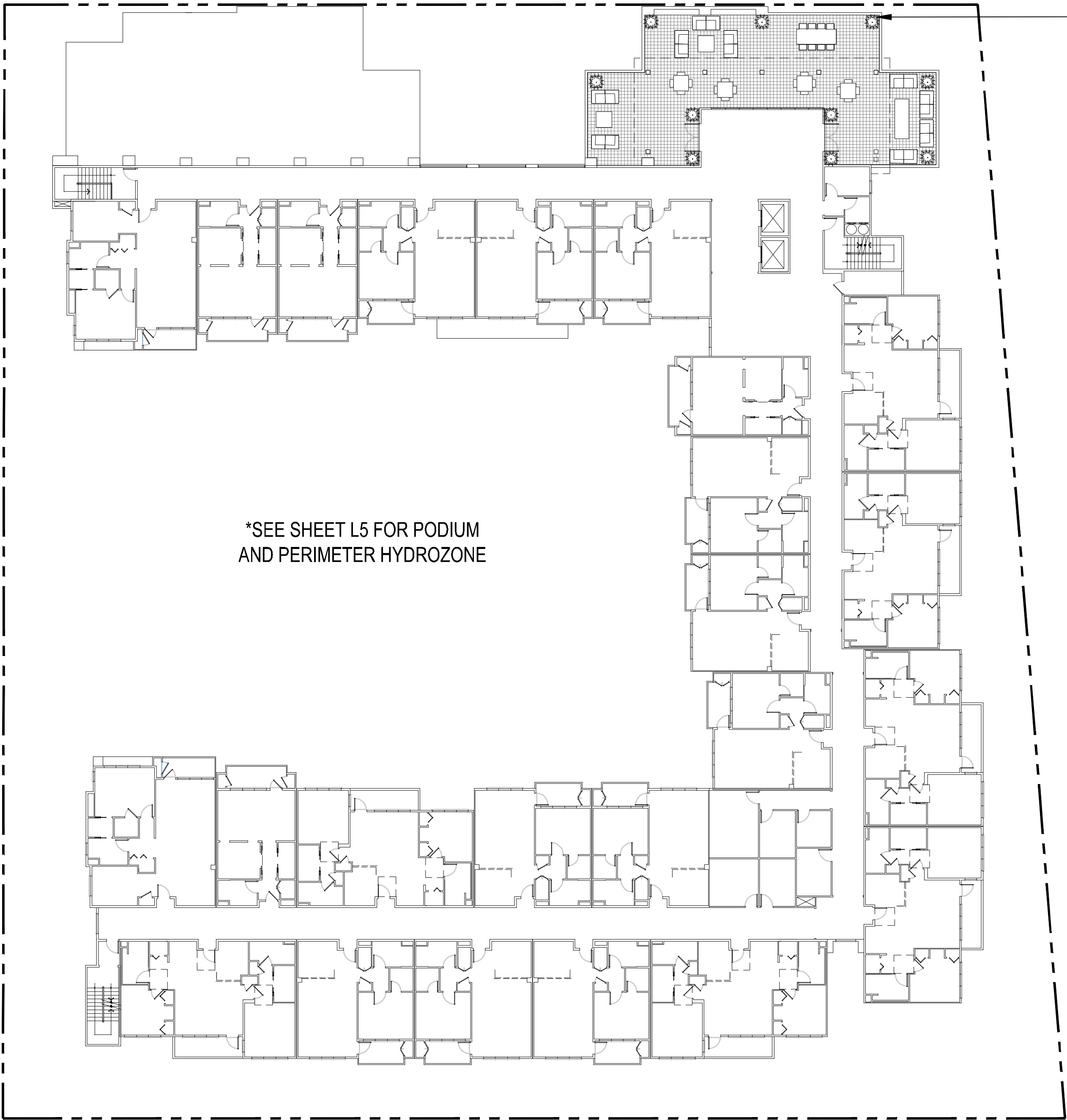
1. SEE SHEET L1 AND L2 FOR PLANTING PLAN.
2. SEE SHEET L3 FOR PLANTING LEGEND AND NOTES.
3. SEE SHEET L4 FOR PLANTING DETAILS.
4. SEE SHEET L7 FOR IRRIGATION DETAILS.

PODIUM AND PERIMETER HYDROZONE

12.23.16



3RD STREET

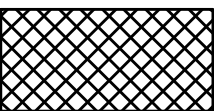


POTTERY, TYPICAL

DEPOT STREET

*SEE SHEET L5 FOR PODIUM
AND PERIMETER HYDROZONE

HYDROZONE LEGEND:



DRIP IRRIGATION FOR AT GRADE, RAISED
PLANTERS, AND POTTERY

1. FINAL DESIGN SHALL CONFORM TO AB1881 OR CITY ADOPTED WATER EFFICIENT LANDSCAPE ORDINANCE.
2. ALL PLANTING AREAS SHOWN WILL BE COMMONLY MAINTAINED BY THE OWNER AND IRRIGATED BY AN AUTOMATIC IRRIGATION SYSTEM.
3. IRRIGATION SYSTEMS WILL BE PERMANENT BELOW GROUND AUTOMATED SYSTEMS ADEQUATE FOR THE ESTABLISHMENT AND MAINTENANCE OF ALL PLANT MATERIAL. THESE SYSTEMS WILL BE INSTALLED AS SOON AS PRACTICAL AFTER GRADING AND PRIOR TO PLANT MATERIAL INSTALLATION AND HYDROSEEDING.
4. ALL TURF, TREE, SHRUB AND GROUND COVER AREAS WILL BE IRRIGATED BY A PERMANENT, AUTOMATIC, UNDERGROUND IRRIGATION SYSTEM. ALL AREAS WILL BE IRRIGATED BY LOW AND MATCHED PRECIPITATION RATE POP-UP SPRAY HEADS. TURF, TREE, SHRUB, AND GROUND COVER AREAS SHALL BE ON SEPARATE VALVES ACCORDING TO PLANT WATER REQUIREMENTS AND EXPOSURE.
5. ALL IRRIGATION SYSTEMS SHALL BE DESIGNED, MAINTAINED AND MANAGED TO MEET OR EXCEED MINIMUM EFFICIENCY.
6. ALL IRRIGATION EQUIPMENT SHALL BE SCREENED APPROPRIATELY FROM VIEW IN PUBLIC AREAS TO THE MAXIMUM EXTENT POSSIBLE.
7. THE FINAL IRRIGATION PLAN SHALL ACCURATELY AND CLEARLY IDENTIFY:
 - A. LOCATIONS AND SIZES OF WATER POINTS OF CONNECTION.
 - B. LOCATION, TYPE AND SIZE OF ALL COMPONENTS OF THE IRRIGATION SYSTEM, INCLUDING AUTOMATIC CONTROLLERS, MAIN AND LATERAL LINES, VALVES, SPRINKLER HEADS, RAIN SWITCHES, AND QUICK COUPLERS.
 - C. STATIC WATER PRESSURE AT THE POINTS OF CONNECTION.
 - D. FLOW RATE (GALLONS PER MINUTE), REMOTE CONTROL VALVE SIZE, AND DESIGN OPERATING PRESSURE (PSI) FOR EACH STATION.
 - E. HYDROZONE INFORMATION TABLE.
 - F. WATER USE CALCULATIONS.
8. IRRIGATION POINT OF CONNECTION SHALL BE PROVIDED BY PROJECT MEP DESIGNER AND CONNECTED TO BUILDING DOMESTIC SERVICE PER DIRECTION OF PROJECT CIVIL ENGINEER.
9. THIS PROJECT SHALL BE RETROFITTED FOR FUTURE SOUTH BAY WATER RECYCLING PROGRAM CONNECTION. THE IRRIGATION PLAN SHALL BE DESIGNED FOR POTABLE WATER, BUT WITH THE USE OF PURPLE PIPE.

- NOTES:**
1. SEE SHEET L3 FOR PLANTING LEGEND AND NOTES.
 2. SEE SHEET L4 FOR PLANTING DETAILS.
 3. SEE SHEET L5 AND L6 FOR HYDROZONE PLAN.
 4. SEE SHEET L7 FOR IRRIGATION DETAILS.

**ROOF DECK
HYDROZONE**

12.23.16

SUNSWEEET MIXED USE

Morgan Hill, California

0 10 20 40
SCALE: 1" = 20'-0"

L6

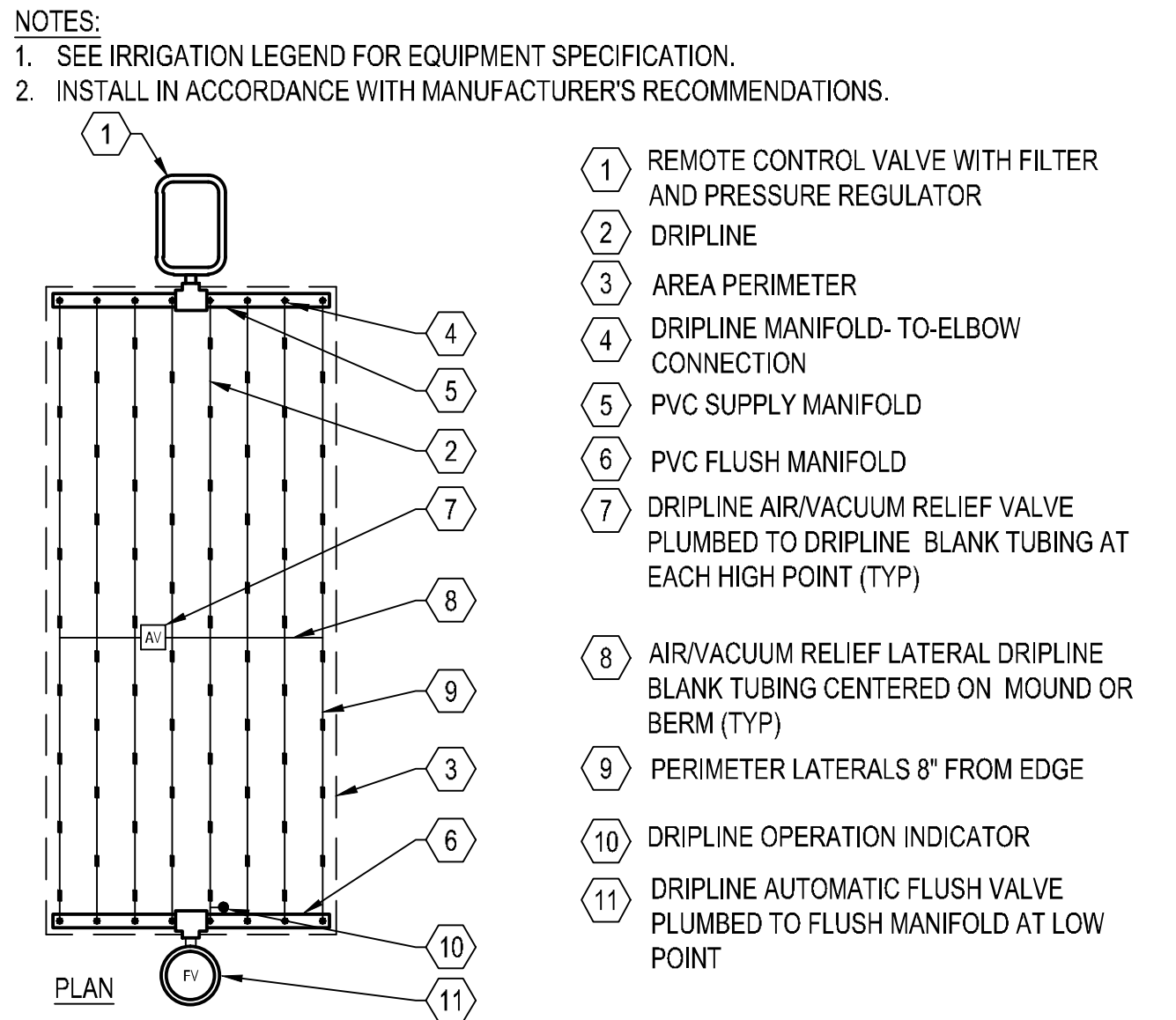
MH engineering Co.
16075 Vineyard Blvd., Morgan Hill, CA 95037

HMM
LANDSCAPE ARCHITECTURE

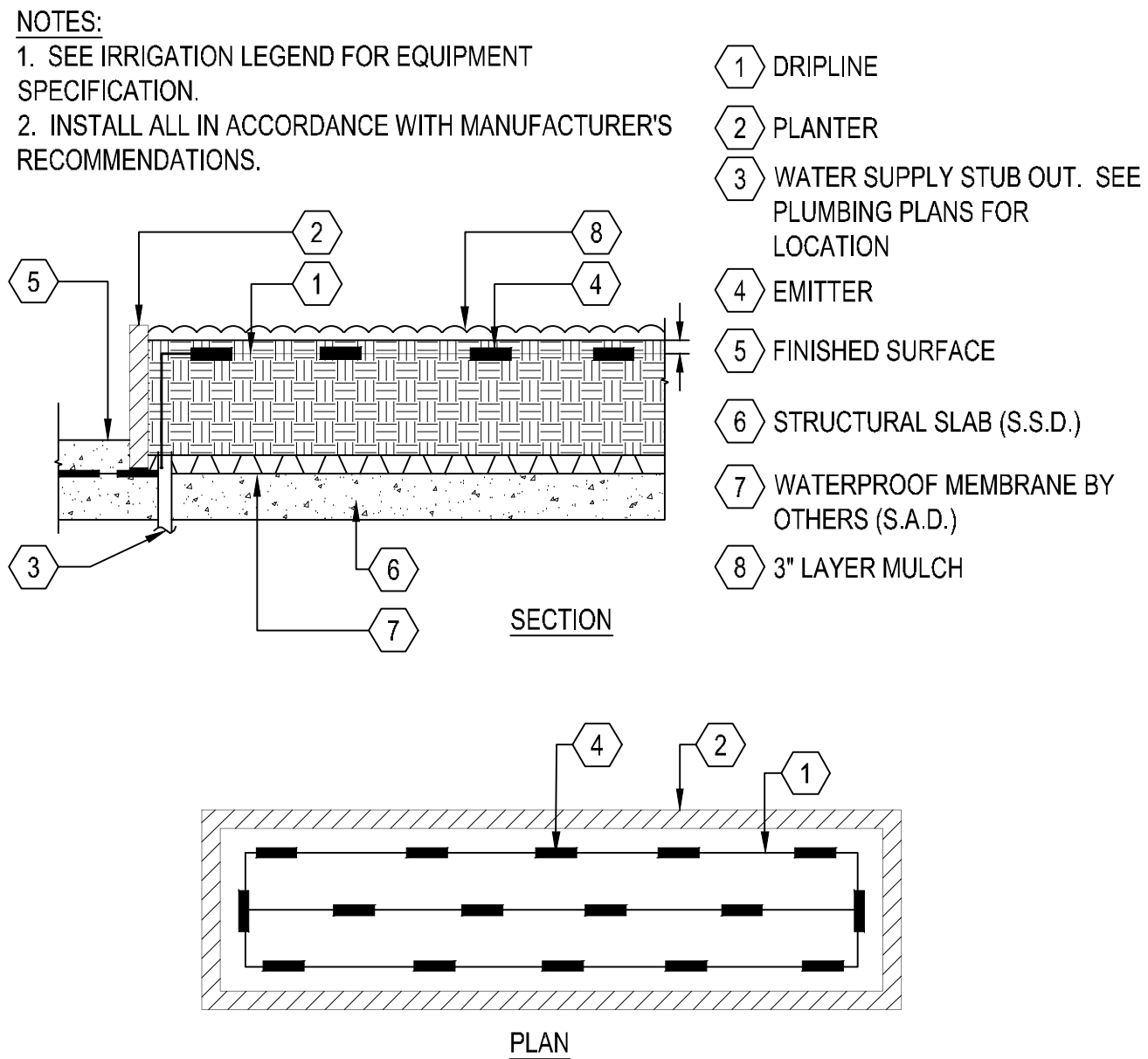
Sunsweet
Morgan Hill LLC

Bassenian | Lagoni
ARCHITECTURE • PLANNING • INTERIORS

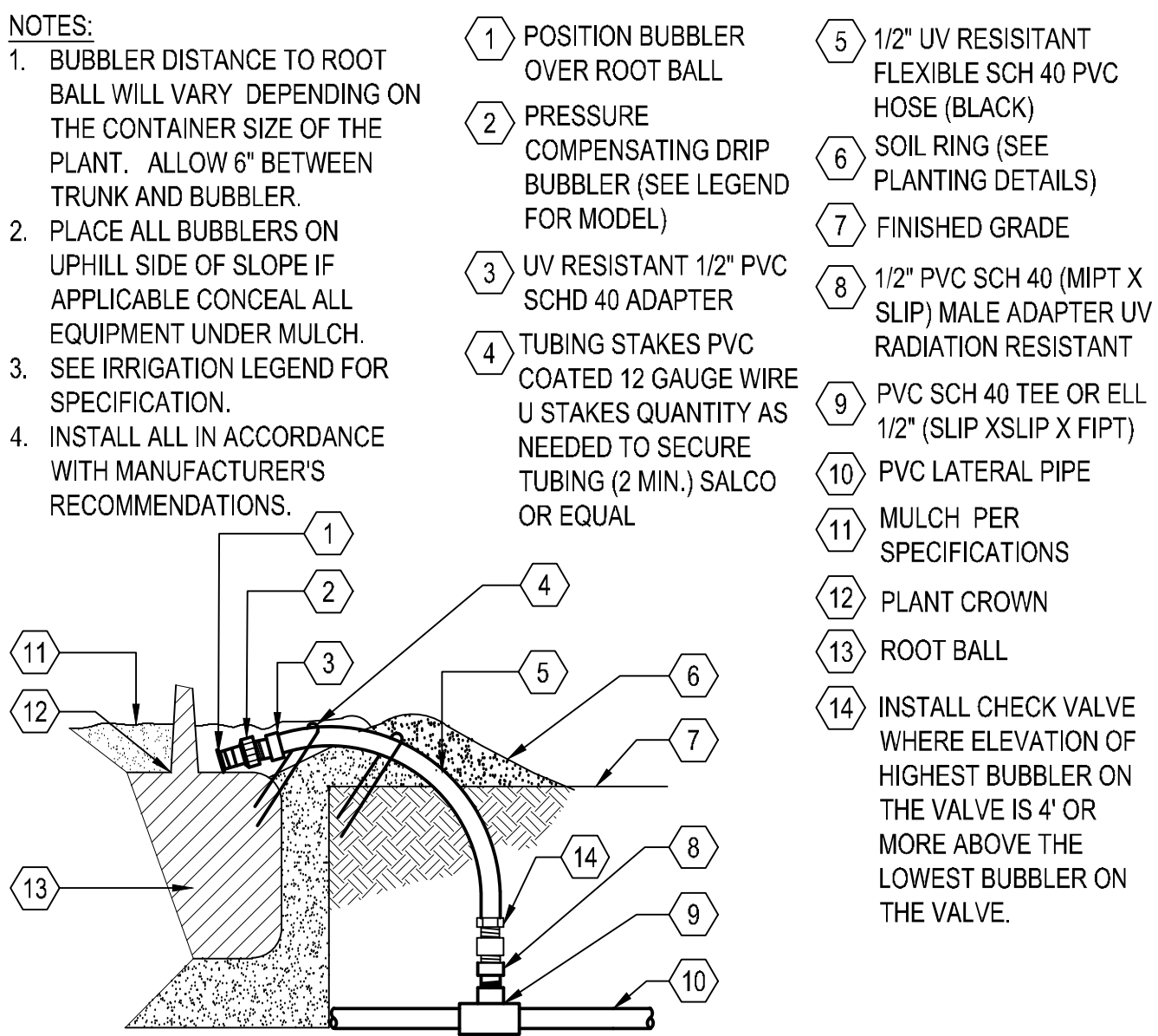
Copyright 2016 Bassenian | Lagoni Architects



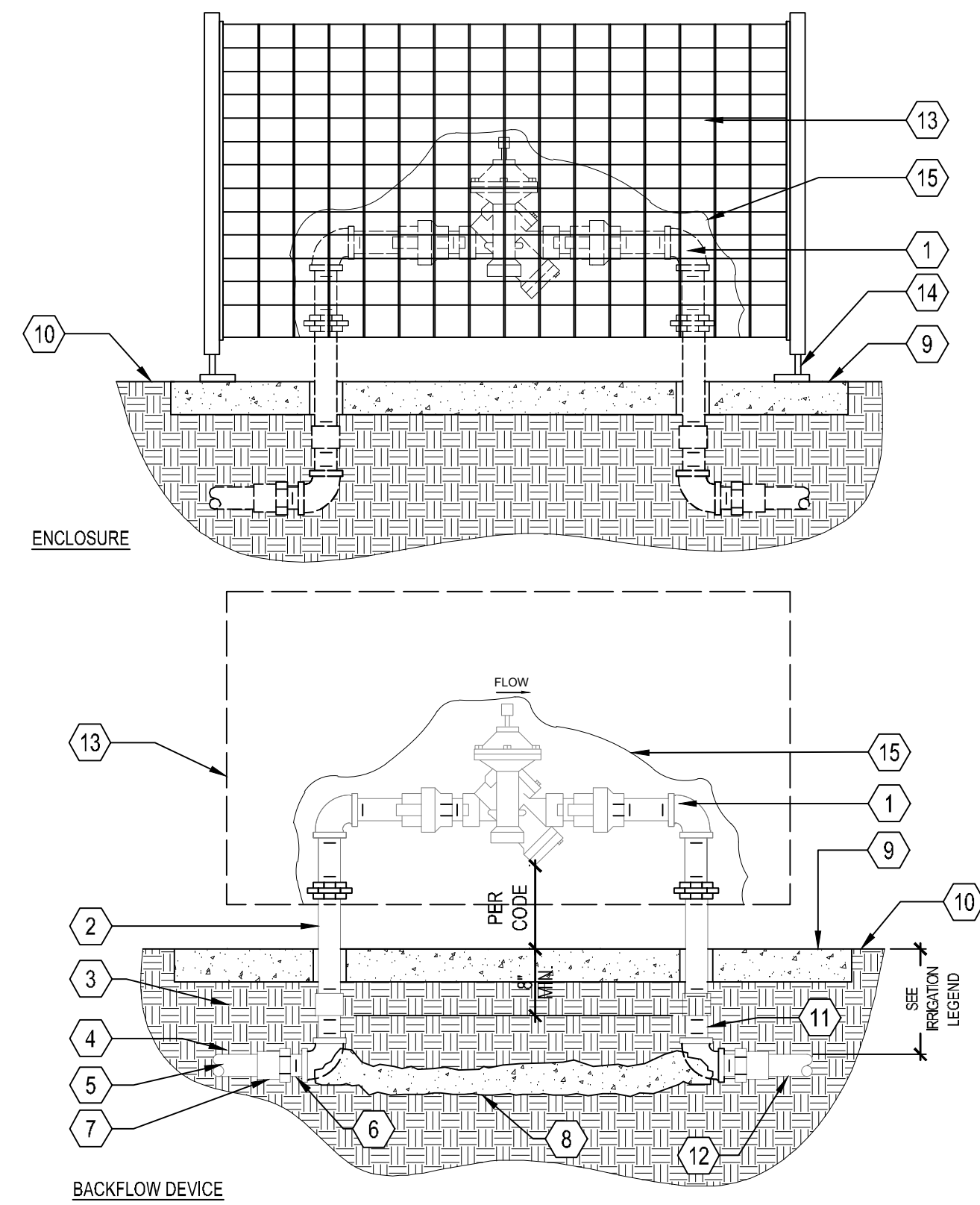
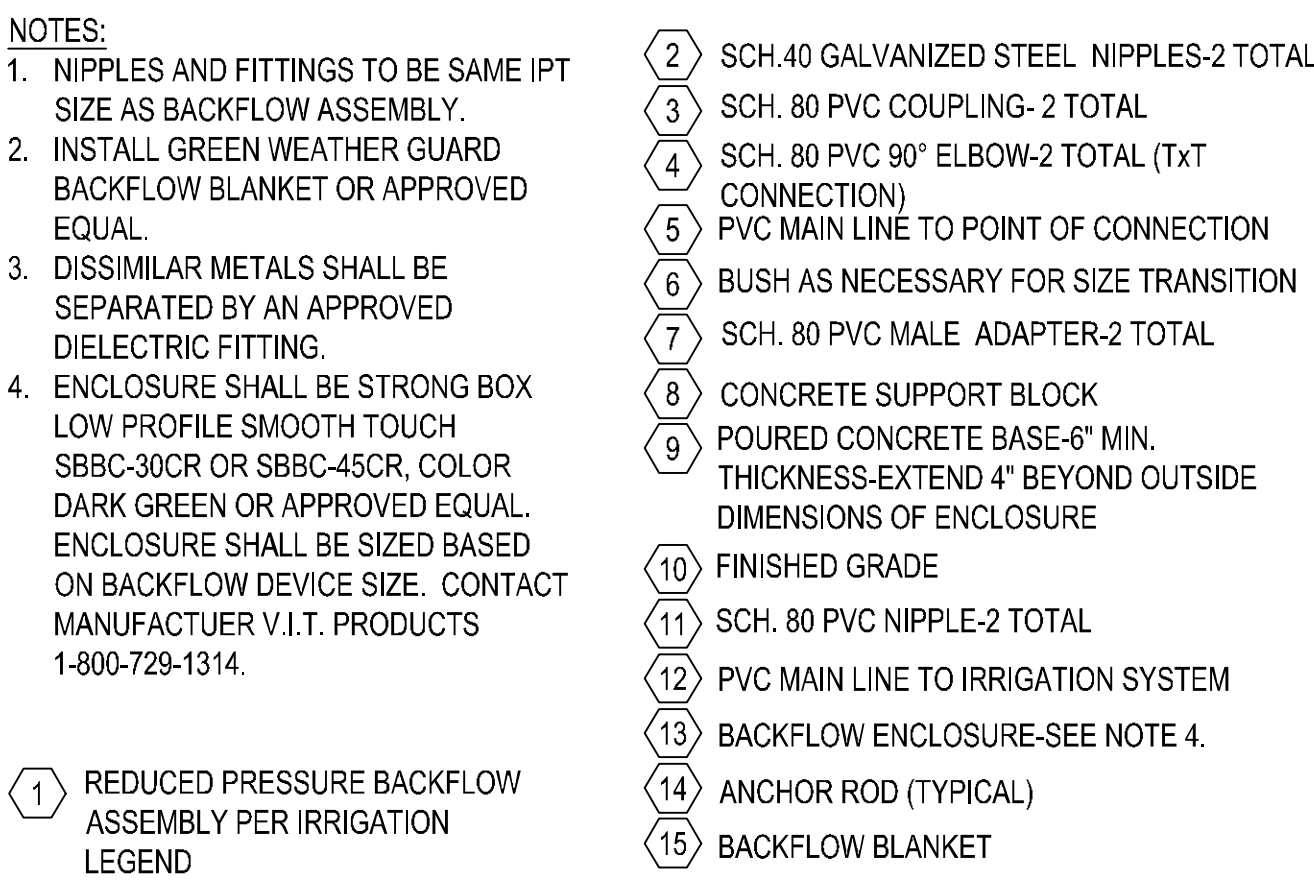
E DRIPLINE END-FEED LAYOUT
N.T.S.



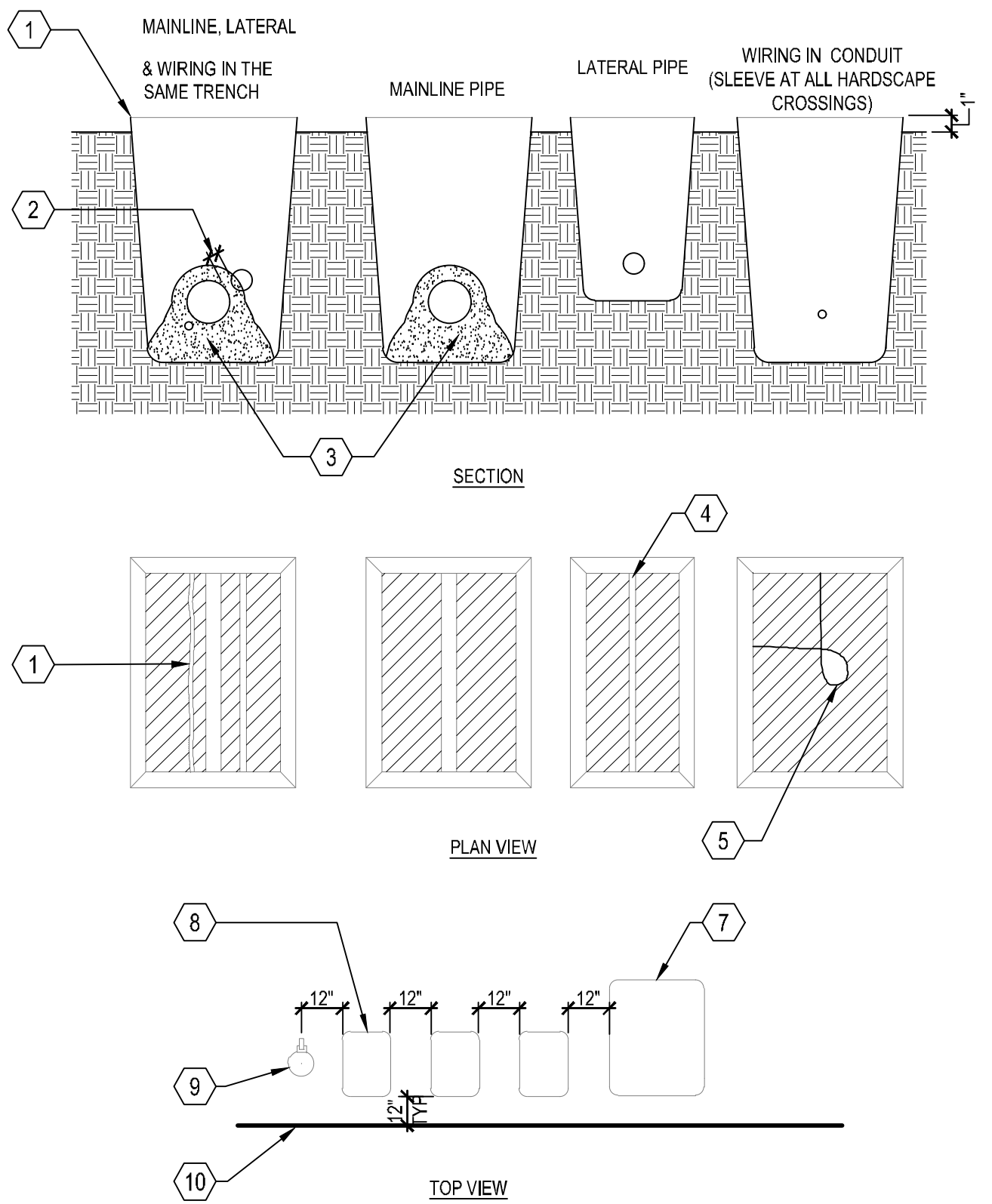
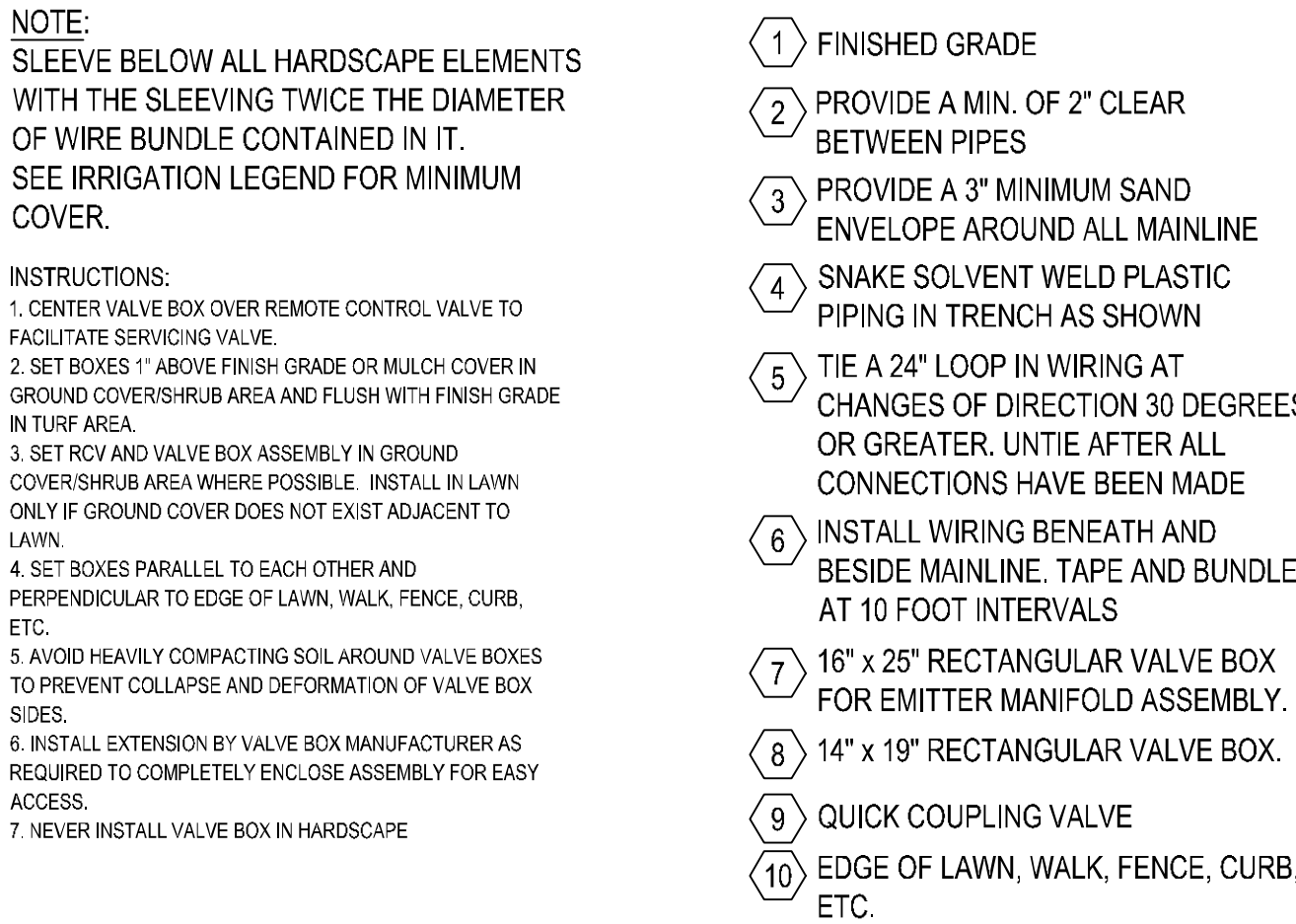
C DRIPLINE PODIUM PLANTER LAYOUT
SCALE: NTS



D ON GRADE TREE BUBBLER
N.T.S.



B REDUCED PRESSURE BACKFLOW DEVICE ENCLOSURE AND BLANKET
N.T.S.



A INSTALLATION DIAGRAMS
N.T.S.



G BAR HEIGHT SEATING



D WALL SCONCE LIGHTING



A DECORATIVE PAVING



H PAVILION



E CAFE SEATING



B POST LIGHTING



I BRICK FEATURE WALL



F CASUAL SEATING OPTIONS



C FEATURE POST LIGHTING

**SITE AMENITY
CONCEPT IMAGES**

SUNSWET MIXED USE

Morgan Hill, California

0 10 20 40
SCALE: 1" = 20'-0"

L8

MH engineering Co.
16075 Vineyard Blvd., Morgan Hill, CA 95037

HMH
LANDSCAPE ARCHITECTURE

Sunsweet
Morgan Hill LLC

Bassenian | Lagoni
ARCHITECTURE • PLANNING • INTERIORS
Copyright 2016 Bassenian | Lagoni Architects

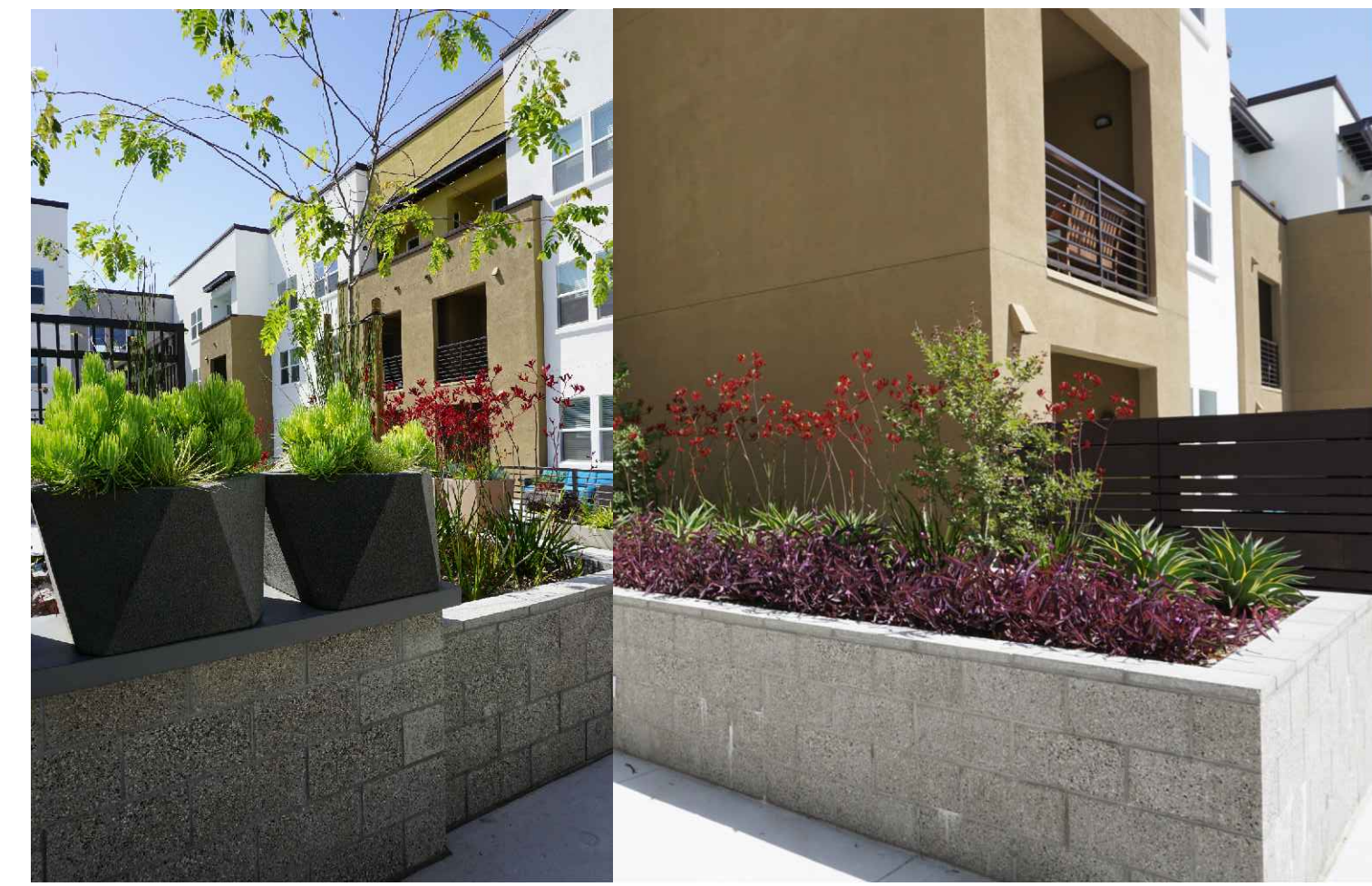
12.23.16



G POTTERY



D BIKE PARKING



A RAISED PLANTERS



E BBQ COUNTER



B SYNTHETIC TURF FLEX SPACE



F PLAZA BENCH



C FIRE FEATURE

**SITE AMENITY
CONCEPT IMAGES**

SUNSWEEET MIXED USE

Morgan Hill, California

0 10 20 40
SCALE: 1" = 20'-0"

L9

MH engineering Co.
16075 Vineyard Blvd., Morgan Hill, CA 95037

HMM
LANDSCAPE ARCHITECTURE

Sunsweet
Morgan Hill LLC

Bassenian | Lagoni
ARCHITECTURE • PLANNING • INTERIORS
Copyright 2016 Bassenian | Lagoni Architects

12.23.16