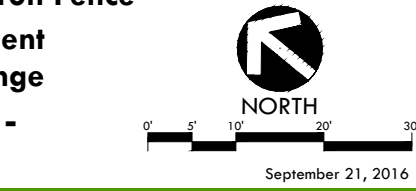


DEPOT PARK
SITE PLAN
MORGAN HILL, CA



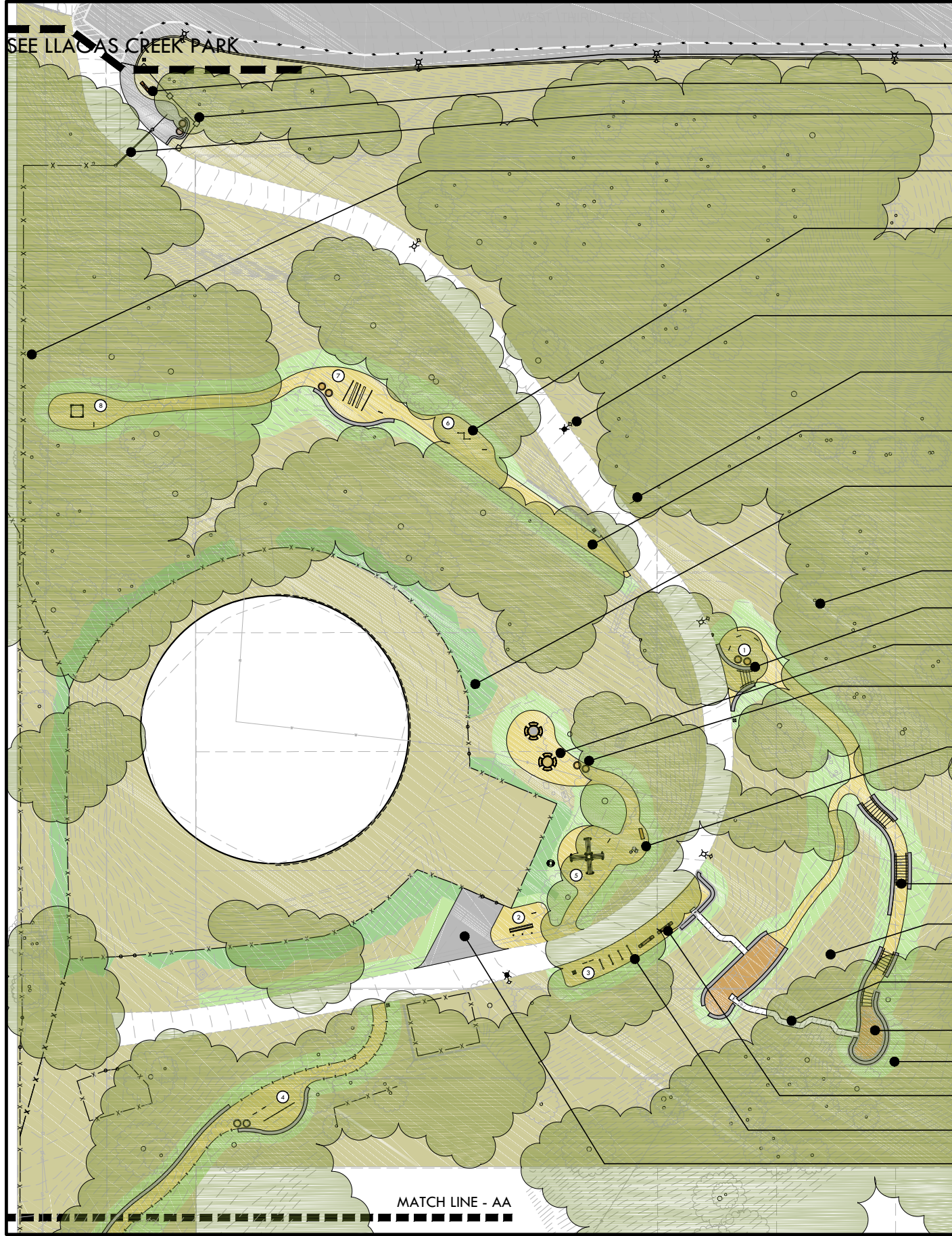
September 21, 2016



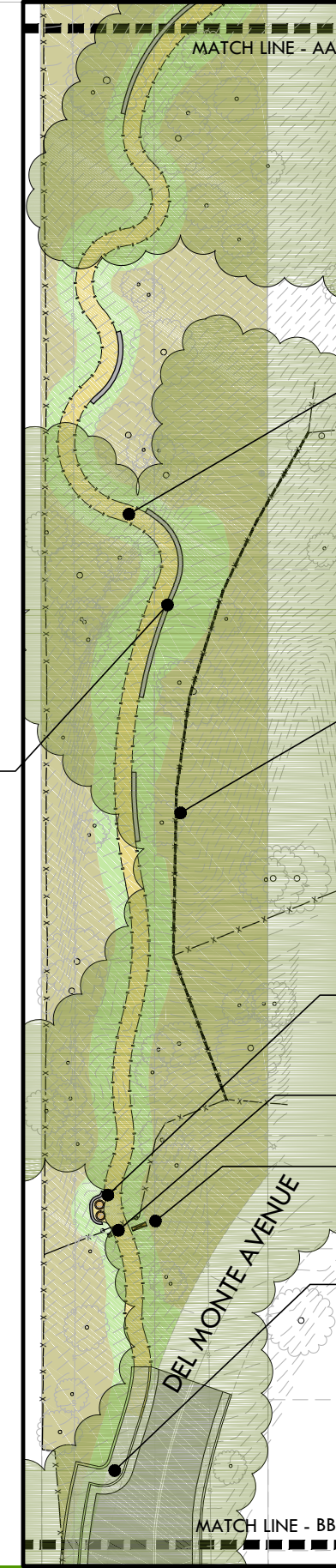
DOWNTOWN CREEK PARK **SITE PLAN** **MORGAN HILL, CA**



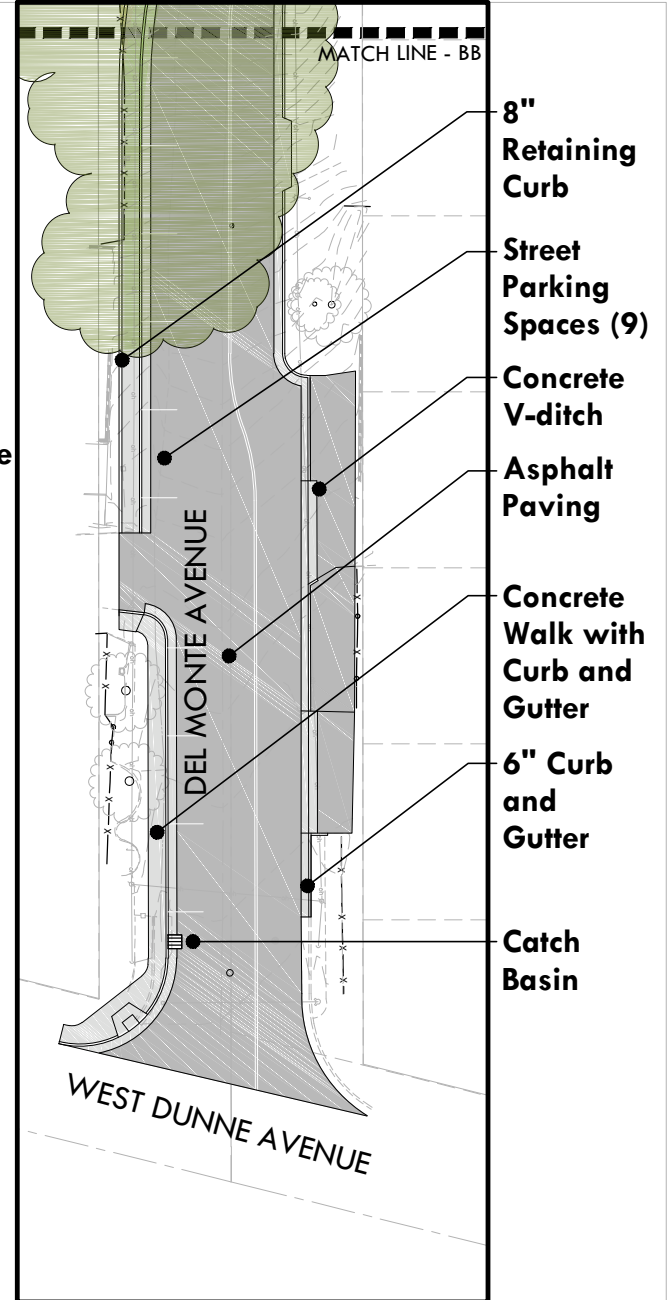
LANDSCAPE ARCHITECTURE
 CIVIL ENGINEERING
 SPORT PLANNING & DESIGN
 2455 The Alameda, Ste. 200
 Santa Clara, CA 95050
 tel: 408.985.7200
 fax: 408.985.7260
 www.verdedesigninc.com



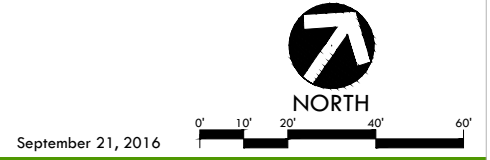
- Informational Trail Signage
- Post and Rail Fence
- Automatic Vehicle Gate with Remote Control
- Improve Fencing to Prevent Access
- Outdoor Fitness Equipments (Eight Total) with Instructional Signs
- LED Pole Light with Security Camera (2)
- Outdoor Fitness Stations Map/ Sign
- Decomposed Granite Walks and Fitness Areas
- New Planting to Help Screen Tower Fencing and Equipment (Visual & Noise)
- Existing Trees
- Versa-Lok Retaining Walls
- Picnic Tables
- Trash and Recycle Receptacles
- Informational Signage on City History, View to Granada, etc. with Drinking Fountain and Water Bottle Filling Station
- Versa-Lok Stairs
- Natural Understory and Grasses to Remain
- Slides - Upper and Lower
- Fibar Surfacing at Slides
- Erosion Control Hydroseed
- Benches
- Bike Racks
- New Vehicular Maintenance Access



- 4.5' Terrapave Trail
- Chainlink Fence with Privacy Slats to Block View to Residence Back Yard
- Trash and Recycle Receptacles
- Trail Marker Post Signs (4)
- Informational Trail Signage
- 4' Concrete Walk



Del Monte Avenue Renovation



HILLTOP PARK SITE PLAN MORGAN HILL, CA